

HEIGHT *6'1*  
HAIR *BLONDE*  
EYES *BLUE/GREEN*  
BUST *30 1/2*  
WAIST *24*  
HIPS *35 1/2*  
SHOE *11*



**dna**  
MODEL MANAGEMENT LLC

555 WEST 25TH ST, 6TH FL NEW YORK, NY 10001 TEL. 212.226.0080 FAX 212.226.7711 [dnamodels.com](http://dnamodels.com)

ARIEL NICHOLSON



144



PREVIOUS PAGE:  
 ARIEL WEARS: CUSTOM  
 OVERSIZED BEEHIVE HAT,  
 RECYCLED FROM STRAW  
 REMNANTS, HEATHES  
 HUEY FOR DISPLAY COPY  
 / VICTORIAN CORSET  
 HELIX OFFNER VINTAGE  
 / WIDE LEG SPACE  
 PANTS, RAF SIMONS  
 FRODO, ARTIFACT NEW  
 YORK / PATCHWORK TARI  
 BOOTS, MAISON MARTIN  
 MARGIELA, SS2010,  
 ARTIFACT NEW YORK

THIS PAGE: ARIEL  
 WEARS: CUSTOM  
 BEEKEEPER HAT AND  
 VEIL - RECYCLED FROM  
 HAND-DYED STRAW  
 REMNANTS, VINTAGE  
 BAKED VEILING AND  
 LINEN FABRIC REMNANTS,  
 HEATHES HUEY FOR  
 DISPLAY COPY / KNIT  
 SILK HARNES, CAMISOLE,  
 CALVIN KLEIN, SS2014,  
 PDM ARCHIVE / STIFF  
 OFF-WHITE NETTED  
 CRINOLINE, 1990S,  
 HELIX OFFNER VINTAGE /  
 HAND-MADE FINE LINEN  
 PETTICOAT, 1850S,  
 HELIX OFFNER VINTAGE  
 / PAINTED SQUARE-TOE  
 BOOTS, MAISON MARTIN  
 MARGIELA, SS2002,  
 ARTIFACT NEW YORK

OPPOSITE PAGE:  
 ARIEL WEARS: CUSTOM  
 HONEYCOMB HAT,  
 RECYCLED FROM GOLD  
 VEIL REMNANT, VINTAGE  
 SIMONA REMNANT AND  
 VINTAGE METALLIC  
 BEADED STAMENS,  
 HEATHES HUEY FOR  
 DISPLAY COPY / COTTON  
 SILK JACKET, CALVIN  
 KLEIN, SS2007, PDM  
 ARCHIVE / COTTON  
 NYLON AND LENO WEAVE  
 LINEN TOP (CUT USING  
 ZERO WASTE METHOD),  
 WED STUDIO, SS2021 /  
 CROCODILE TROUSERS,  
 CALVIN KLEIN, SS2007,  
 PDM ARCHIVE

145

# ARIEL NICHOLSON

HEIGHT 6'1 HAIR *BLONDE* EYES *BLUE/GREEN* BUST 30 1/2 WAIST 24 HIPS 35 1/2 SHOE 11



ARIEL WEARS: HOODIE  
 DICKEY, PRAGA, 2018S,  
 ARTIFACT NEW YORK  
 / CUSTOM BRAIDED  
 HARNESS, MADE FROM  
 EXCESS MILLERREY PUM  
 FLY, HEATHER, MUEY,  
 COS, DISPLAY, COM, /  
 BRA, UPCYCLED FROM  
 RAYON, JERSEY AND  
 COTTON TAPE, SOLE /  
 SEASIDE, POLYESTER  
 NYLON AND VISCOSE DEARB  
 (CUT USING ZERO WASTE  
 METHOD), WSL, STUDED,  
 FWOODS / DOUBLE-WAISTED  
 MULTI-STRAP PARACHUTE  
 PANTS, CRAIG GREEN,  
 FWOODS, ARTIFACT NEW  
 YORK / PAINTED SQUARE-  
 TOE BOOTS, MAISON  
 MARTIN MARGIELA,  
 202002, ARTIFACT NEW  
 YORK



# ARIEL NICHOLSON

HEIGHT 6'1 HAIR *BLONDE* EYES *BLUE/GREEN* BUST 30 1/2 WAIST 24 HIPS 35 1/2 SHOE 11





# ARIEL NICHOLSON

HEIGHT 6'1 HAIR *BLONDE* EYES *BLUE/GREEN* BUST 30 1/2 WAIST 24 HIPS 35 1/2 SHOE 11



CAPPOTTO LUNGO MONOPETTO DI  
BROCCATO E ABITO DI SETA, MARNI

NELLA PAGINA ACCANTO, EMILY  
MILLER @ NEXT; GIACCA DI DENIM  
CON LOGO D2S E FELPA DI COTONE  
INCORPORATA, D2S; ANNIVERSARY  
CAPSULE COLLECTION, DSQUARED2.



# ARIEL NICHOLSON

HEIGHT 6'1 HAIR *BLONDE* EYES *BLUE/GREEN* BUST 30 1/2 WAIST 24 HIPS 35 1/2 SHOE 11





VOGUE  
SEP

Fashion's New Beginnings

Prada's Double Act

PLUS:  
The Met Is Back!

IN REAL LIFE

THE MODELS WHO MAKE THE MOMENT

# ARIEL NICHOLSON

HEIGHT 6'1 HAIR *BLONDE* EYES *BLUE/GREEN* BUST 30 1/2 WAIST 24 HIPS 35 1/2 SHOE 11

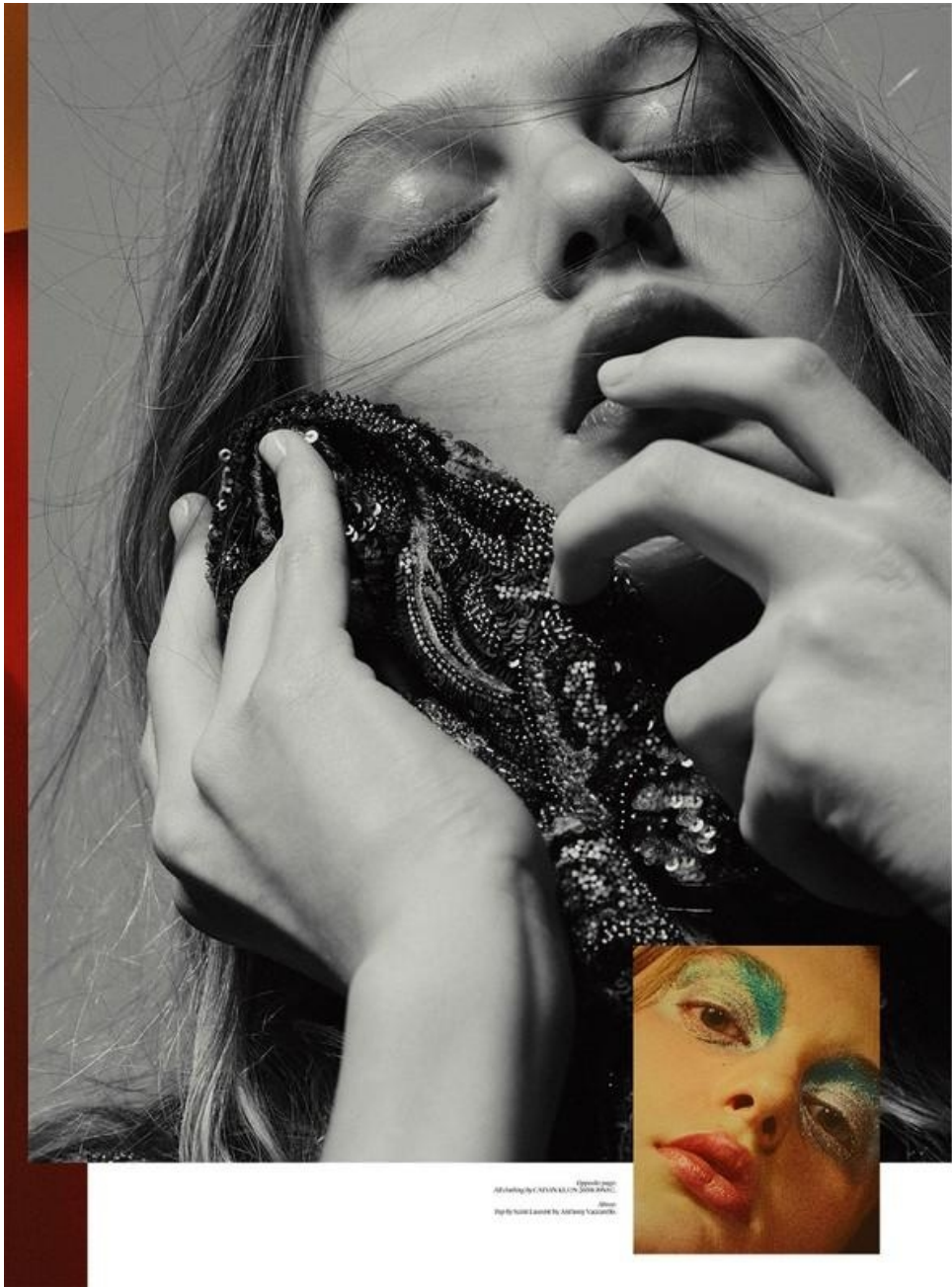




# ARIEL NICHOLSON

HEIGHT 6'1 HAIR *BLONDE* EYES *BLUE/GREEN* BUST 30 1/2 WAIST 24 HIPS 35 1/2 SHOE 11





Special Agent  
Modeling by C. SEAN K. CO. (2016) and C.  
Photo by Scott L. Lander for Anthony Vaccarello



# ARIEL NICHOLSON

HEIGHT 6'1 HAIR *BLONDE* EYES *BLUE/GREEN* BUST 30 1/2 WAIST 24 HIPS 35 1/2 SHOE 11



# ARIEL NICHOLSON

HEIGHT 6'1 HAIR *BLONDE* EYES *BLUE/GREEN* BUST 30 1/2 WAIST 24 HIPS 35 1/2 SHOE 11





# ARIEL NICHOLSON

HEIGHT 6'1 HAIR *BLONDE* EYES *BLUE/GREEN* BUST 30 1/2 WAIST 24 HIPS 35 1/2 SHOE 11





# ARIEL NICHOLSON

HEIGHT 6'1 HAIR *BLONDE* EYES *BLUE/GREEN* BUST 30 1/2 WAIST 24 HIPS 35 1/2 SHOE 11



# ARIEL NICHOLSON

HEIGHT 6'1 HAIR *BLONDE* EYES *BLUE/GREEN* BUST 30 1/2 WAIST 24 HIPS 35 1/2 SHOE 11







And I knew that  
I've been waiting



181



Out  
of  
time,  
out  
of  
space

# ARIEL NICHOLSON

HEIGHT 6'1 HAIR *BLONDE* EYES *BLUE/GREEN* BUST 30 1/2 WAIST 24 HIPS 35 1/2 SHOE 11



Muse  
Make Up  
Hair  
Casting Director  
Photo Assistant  
Fashion Assistant

ARIEL NICHOLSON WITH DNA MODELS  
DICK PAGE  
BOB RECINE  
CLARE RHODES @CASTINGBYUS  
JAVIER VILLEGAS  
GREG MITOLA

# ARIEL NICHOLSON

HEIGHT 6'1 HAIR *BLONDE* EYES *BLUE/GREEN* BUST 30 1/2 WAIST 24 HIPS 35 1/2 SHOE 11



PHOTOGRAPHER / DREW JARRETT

FASHION EDITOR / LUELLA BARTLEY

*A midnight teenage romance driven  
by suburban dreams of escape,  
starring Ariel Nicholson*

*Ariel wears golden brown Japanese twill  
jacket by GUCCI; yellow hooded sweatshirt  
by PALACE; denim jeans by CALVIN KLEIN  
JEANS; black leather shoulder bag by HERMES;  
fine ribbed socks by MIU MIU; cognac Weejuns  
penny loafers by GH BASS; steel Tank  
watch with diamonds by CARTIER*

IT'S  
NOT  
ME,

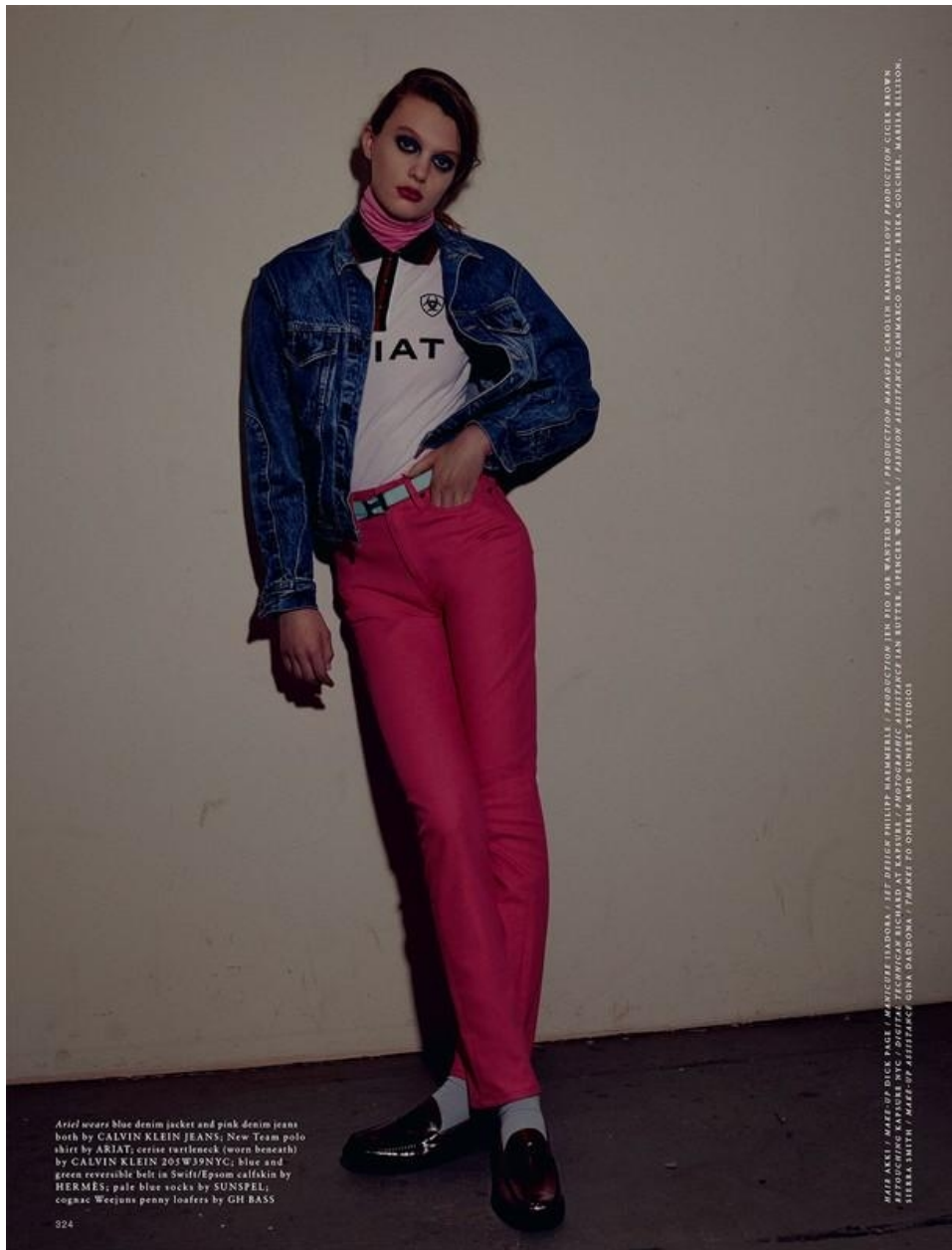
IT'S  
YOU

316

317

# ARIEL NICHOLSON

HEIGHT 6'1 HAIR BLONDE EYES BLUE/GREEN BUST 30 1/2 WAIST 24 HIPS 35 1/2 SHOE 11



Ariel wears blue denim jacket and pink denim jeans both by CALVIN KLEIN JEANS; New Team polo shirt by ARIAT; cruise turtleneck (worn beneath) by CALVIN KLEIN 205W39NYC; blue and green reversible belt in Swift/Epsom calfskin by HERMÈS; pale blue socks by SUNSFEL; cognac Weejuns penny loafers by GH BASS

324

HAIR: AKKI / MAKEUP: DICK TAGE / MANICURE: SANDRA / SET DESIGN: PHILIPP WARMERLÉ / PRODUCTION: TEN TID FOR WANTED MEDIA / PRODUCTION MANAGER: CAROLIN KAMAUERHOFF / PRODUCTION: CILIK BROWN / STYLING: ANNE WILSON / STYLING ASSISTANT: ANA SUTER / SHIRT: SHERIDAN / SUIT: SHERIDAN / BELT: HERMÈS / SHOES: GIAMMARCO ROVATI / BELT: GOLDSIEG, MARIN ELLISON, SHERIDAN / MAKEUP ASSISTANCE: GINA DARDONA / MAKEUP ONSET AND SUNSET STUDIO



Ariel wears blue long-sleeved polo top by PALACE; white turtleneck (worn beneath) by CALVIN KLEIN 205W39NYC; pearl earrings by ALESSANDRA RICH

318

# ARIEL NICHOLSON

HEIGHT 6'1 HAIR BLONDE EYES BLUE/GREEN BUST 30 1/2 WAIST 24 HIPS 35 1/2 SHOE 11





# ARIEL NICHOLSON

HEIGHT 6'1 HAIR *BLONDE* EYES *BLUE/GREEN* BUST 30 1/2 WAIST 24 HIPS 35 1/2 SHOE 11



# DAZED

Declare Independence



**HOLD THE FUTURE**  
ARIEL NICHOLSON

The Infinite Identities Issue: Chelsea Manning + guest-edit, Hunter Schafer, Krow, Gregg Araki, Juliet Jacques, Finn Buchanan, Kelsey Lu, Ian Isiah, Karen O, Rowan Blanchard

# LOVE

10TH  
ANNIVERSARY  
ISSUE



ISSUE 20  
ON SALE 6TH AUGUST 2018

ARIEL NICHOLSON PHOTOGRAPHED BY MERT ALAS & MARCUS PIGGOTT / FASHION EDITOR PANOS YIAPANIS

## ARIEL NICHOLSON

HEIGHT 6'1 HAIR *BLONDE* EYES *BLUE/GREEN* BUST 30 1/2 WAIST 24 HIPS 35 1/2 SHOE 11





## ARIEL NICHOLSON

HEIGHT 6'1 HAIR *BLONDE* EYES *BLUE/GREEN* BUST 30 1/2 WAIST 24 HIPS 35 1/2 SHOE 11