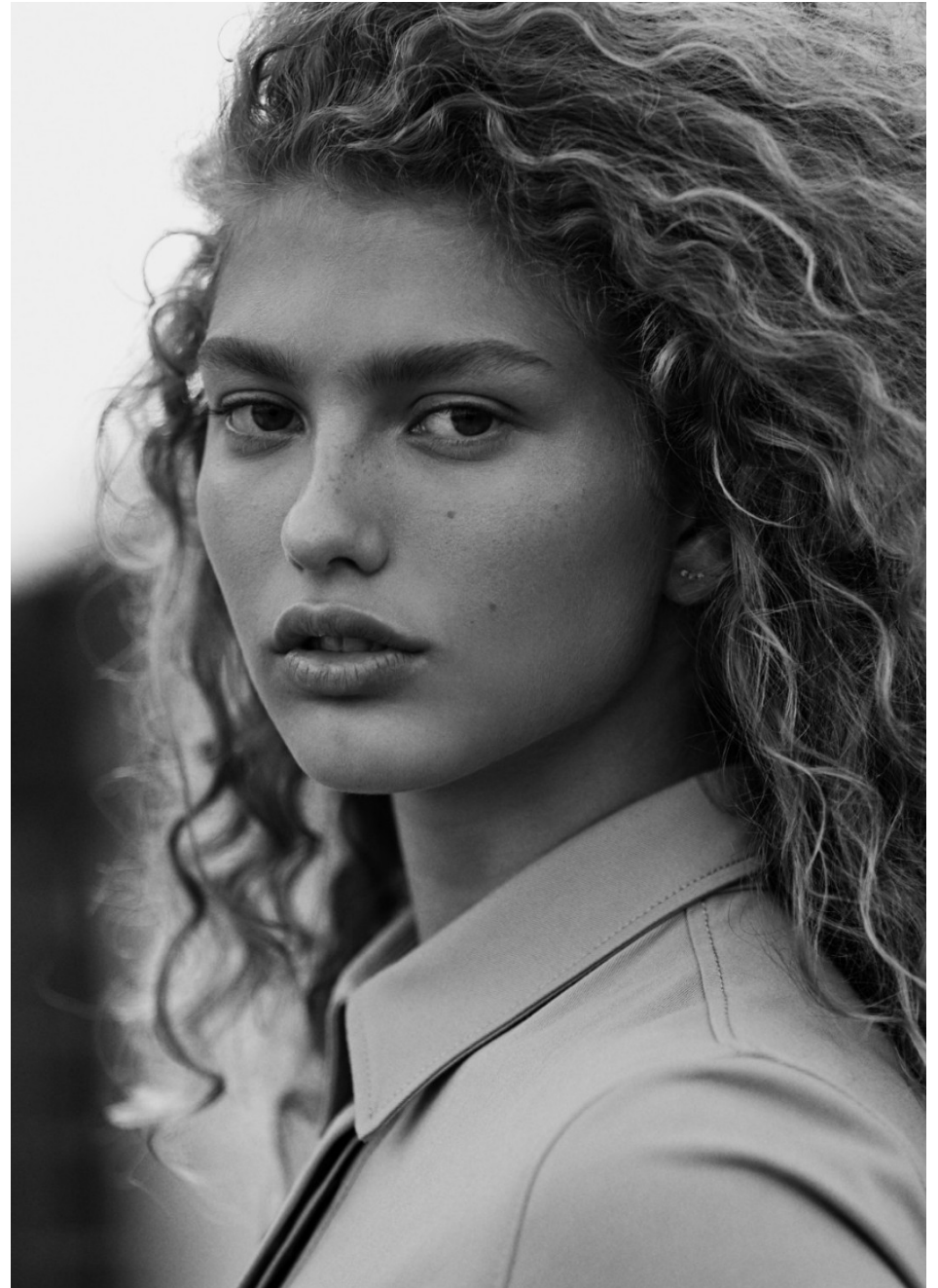


HEIGHT *5'9 1/2*
HAIR *BLONDE*
EYES *BLUE/GREEN*
BUST *34*
WAIST *26 1/2*
HIPS *36*
SHOE *8 1/2*

dna
MODEL MANAGEMENT LLC

555 WEST 25TH ST, 6TH FL NEW YORK, NY 10001 TEL. 212.226.0080 FAX 212.226.7711 dnamodels.com



DORIT REVELIS



Dorit wears swimsuit by Topshop — Previous page: Iselin wears top by Editions M.R and trousers by Raf Simons

239



Dorit wears dress and coat by Balenciaga — Page 240-241: Iselin wears jumpsuit by Joseph

242

DORIT REVELIS

HEIGHT 5'9 1/2 HAIR BLONDE EYES BLUE/GREEN BUST 34 WAIST 26 1/2 HIPS 36 SHOE 8 1/2



258

DORIT REVELIS

HEIGHT 5'9 1/2 HAIR *BLONDE* EYES *BLUE/GREEN* BUST 34 WAIST 26 1/2 HIPS 36 SHOE 8 1/2

417



Opposite page: Sara wears top and underwear by Una Hayde. Bracelet by Abbie Stirrup. Necklace by Philipp Haemmerle. Shoes by Loewe.

This page: Dorit wears dress by Loewe.

418



Opposite page: Sara wears dress by Noir Kei Ninomiya. Headpiece custom-made by Philipp Haemmerle.

This page: Dorit wears blanket by CALVIN KLEIN 205W39NYC.

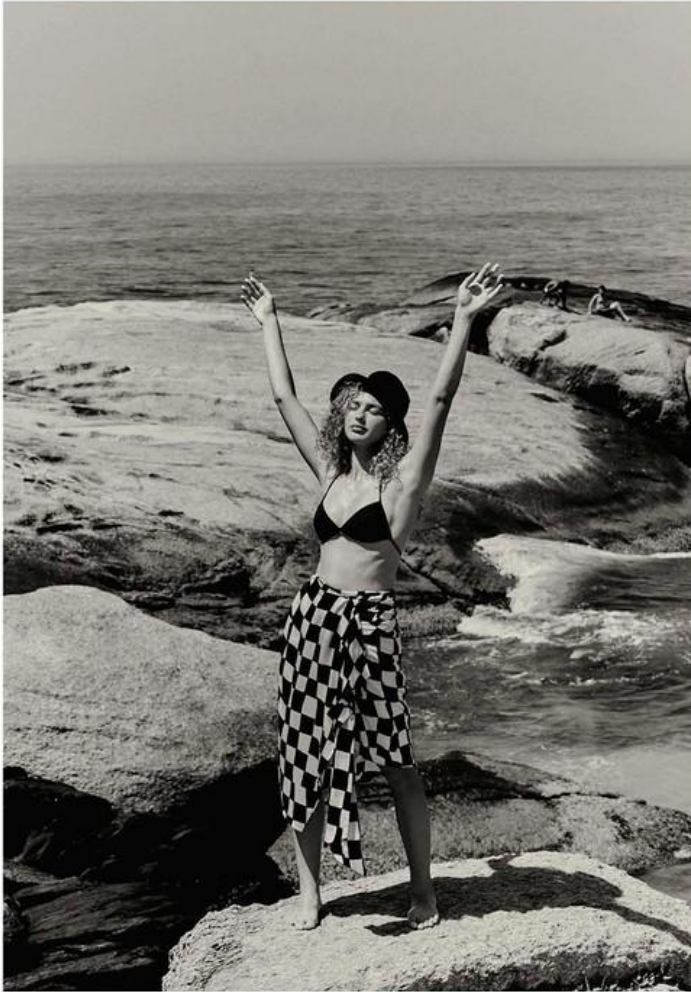
DORIT REVELIS

HEIGHT 5'9 1/2 HAIR *BLONDE* EYES *BLUE/GREEN* BUST 34 WAIST 26 1/2 HIPS 36 SHOE 8 1/2



DORIT REVELIS

HEIGHT 5'9 1/2 HAIR *BLONDE* EYES *BLUE/GREEN* BUST 34 WAIST 26 1/2 HIPS 36 SHOE 8 1/2



Bikini top (sold as set) by Alessandra Rich, \$230; skirt by Oscar De La Renta, \$1,290; hat by Reinhard Plank, \$230
 Opposite: T-shirt by Paco Rabanne x Peter Saville, \$230, at Net-A-Porter.com; briefs by Abyss, \$100; male models wear trunks (left), model's own; wetsuit (right) by Ambush \$550



DORIT REVELIS

HEIGHT 5'9 1/2 HAIR *BLONDE* EYES *BLUE/GREEN* BUST 34 WAIST 26 1/2 HIPS 36 SHOE 8 1/2



DORIT REVELIS

HEIGHT 5'9 1/2 HAIR *BLONDE* EYES *BLUE/GREEN* BUST 34 WAIST 26 1/2 HIPS 36 SHOE 8 1/2



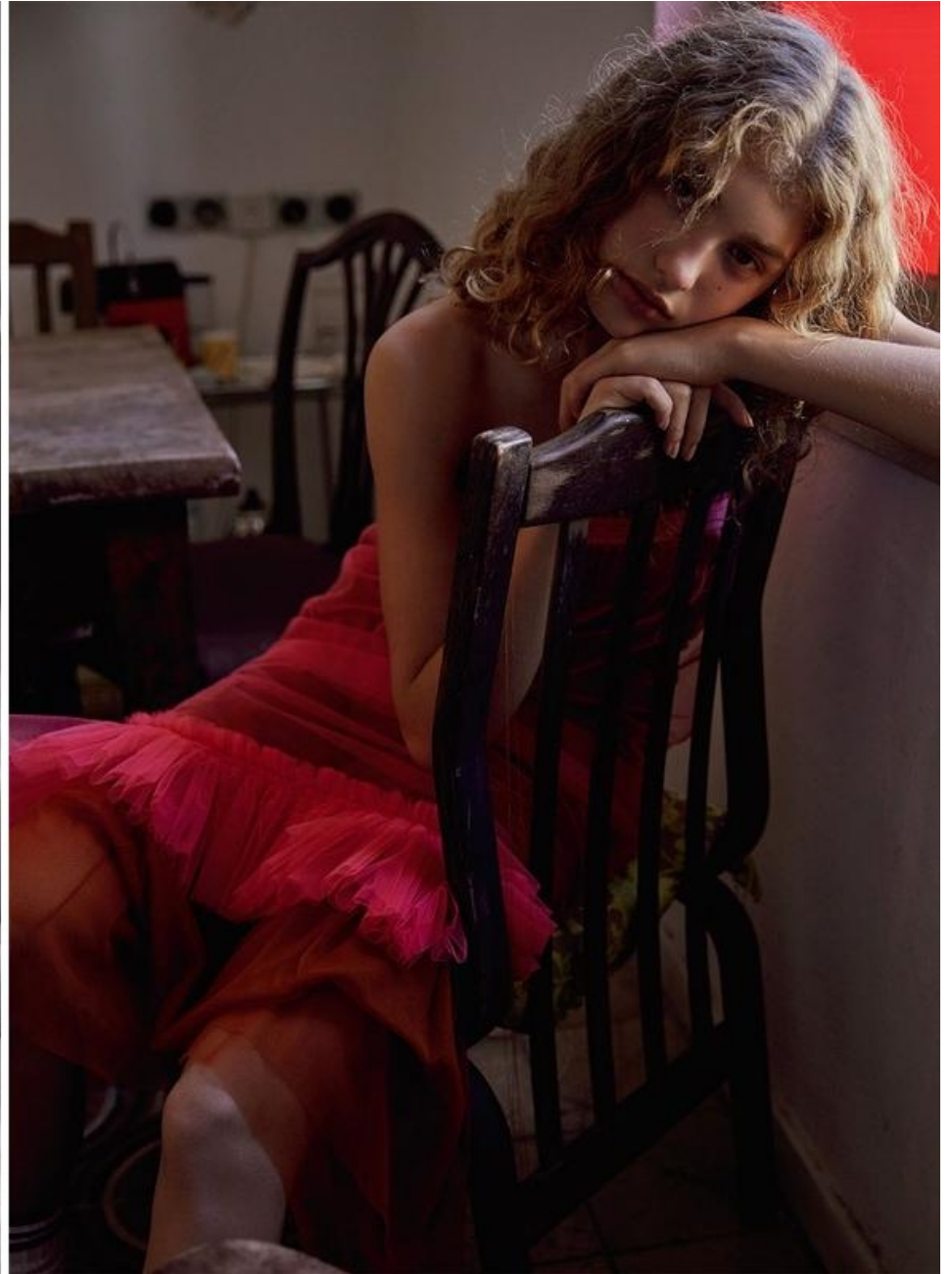
246 *Dorit wears jumper by Sandro and necklace by Catbird—Previous page: Dorit wears top by Jil Sander and trousers by Alexander Wang*



254 *Dorit wears skirt, jacket and trousers by Prada*

DORIT REVELIS

HEIGHT 5'9 1/2 HAIR *BLONDE* EYES *BLUE/GREEN* BUST 34 WAIST 26 1/2 HIPS 36 SHOE 8 1/2



DORIT REVELIS

HEIGHT 5'9 1/2 HAIR *BLONDE* EYES *BLUE/GREEN* BUST 34 WAIST 26 1/2 HIPS 36 SHOE 8 1/2



DORIT REVELIS

HEIGHT 5'9 1/2 HAIR *BLONDE* EYES *BLUE/GREEN* BUST 34 WAIST 26 1/2 HIPS 36 SHOE 8 1/2



GIACCA DI SETA E LEGGINGS DI VISCOSA STAMPATA. VERSACE: TOP ARRICCIAIO, JW ANDERSON; SANDALI MISSONI. HAIR AKKI, MAKE-

UP THOMAS DE KLUYVER ENTRAMBI @ ART PARTNER; PRODUCTION E ON SET PRODUCTION RAGI DHOLAKIA @ ART PARTNER.



MAGLIA EXTRA LUNGA DI SETA A STAMPA FOUERD, CELINE. NELLA PAGINA ACCANTO: TOP SENZA MANICHE E GONNA DI TWEED SPRANGIATO.

CHANEL; TOP DI MAGLIA A MANICHE CORTE, COURREGES; MINIABITO DI PAILLETES, PACO RABANNE; CAPPELLO ELISABETTA FRANCHI.

DORIT REVELIS

HEIGHT 5'9 1/2 HAIR *BLONDE* EYES *BLUE/GREEN* BUST 34 WAIST 26 1/2 HIPS 36 SHOE 8 1/2



DORIT REVELIS

HEIGHT 5'9 1/2 HAIR *BLONDE* EYES *BLUE/GREEN* BUST 34 WAIST 26 1/2 HIPS 36 SHOE 8 1/2