

HEIGHT *5'10*
HAIR *BLONDE*
EYES *BLUE*
BUST *32 1/2*
WAIST *24 1/2*
HIPS *34 1/2*
SHOE *10*



dna
MODEL MANAGEMENT LLC

555 WEST 25TH ST, 6TH FL NEW YORK, NY 10001 TEL. 212.226.0080 FAX 212.226.7711 dnamodels.com

EDIE CAMPBELL



EDIE CAMPBELL
Giacca di pelle, Céline by Hedi Slimane. Pagina accanto. Giacca, reggiseni e gonna di pelle, décolletées di vernice, tutto Gucci.



EDIE CAMPBELL

HEIGHT 5'10 HAIR *BLONDE* EYES *BLUE* BUST 32 1/2 WAIST 24 1/2 HIPS 34 1/2 SHOE 10

(left page) Edie wears all clothing MISSION.
Earrings (worn throughout) model's own.
Rings (worn throughout) SLIM BARRETT.



Cardigan, trousers and hat GIORGIO ARMANI. Bra MÜLLER.

EDIE CAMPBELL

HEIGHT 5'10 HAIR *BLONDE* EYES *BLUE* BUST 32 1/2 WAIST 24 1/2 HIPS 34 1/2 SHOE 10



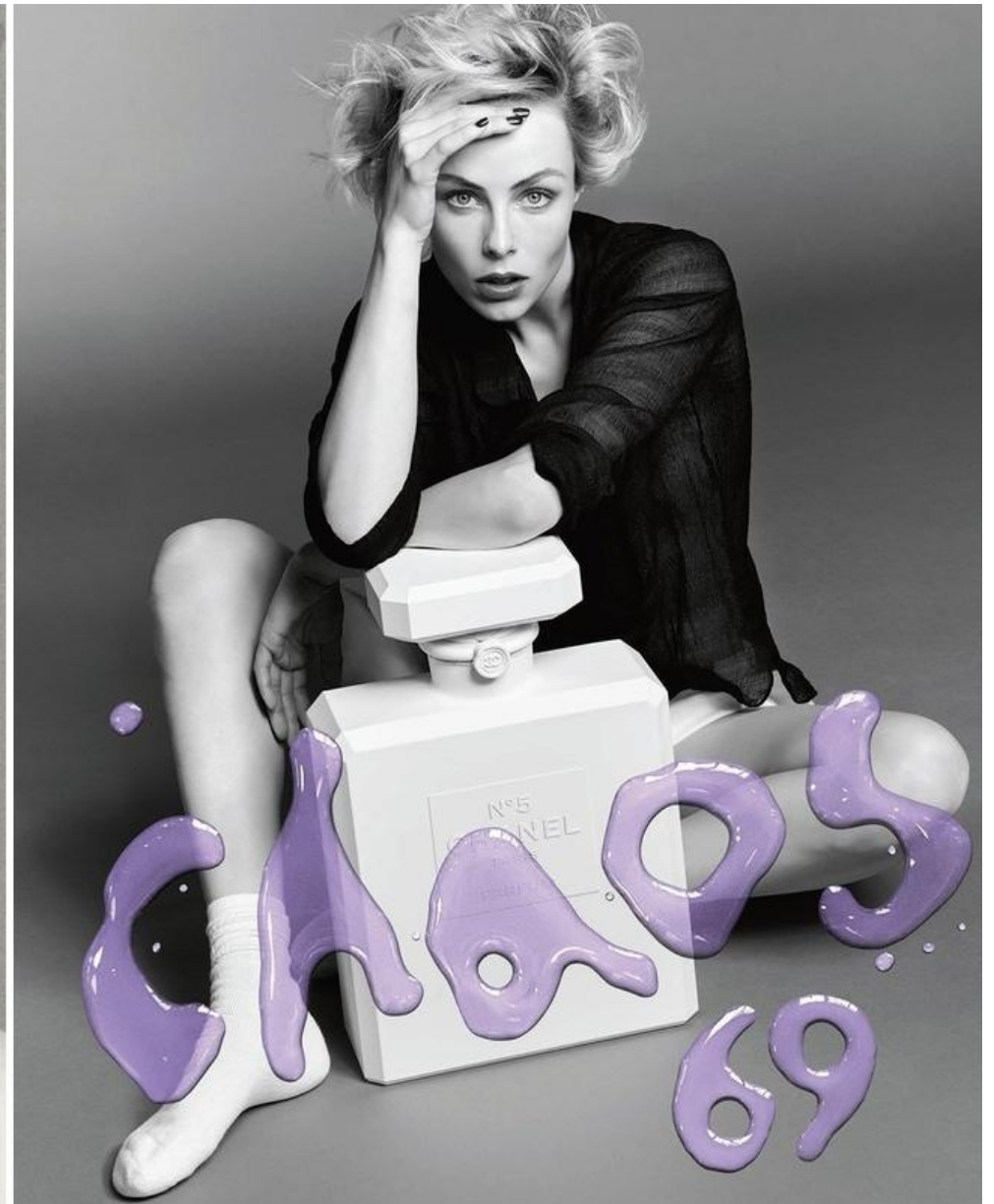
Dress MIU MIU. Skirt JAV ANDERSON.



(left page) Dress archive PADO RABANNE.
courtesy of Found and Vision. Underwear JAV ANDERSON.
Boots feature throughout: BOTTEGA VENETA.
(right page) Jumpout ALAJA.

EDIE CAMPBELL

HEIGHT 5'10 HAIR *BLONDE* EYES *BLUE* BUST 32 1/2 WAIST 24 1/2 HIPS 34 1/2 SHOE 10



EDIE CAMPBELL

HEIGHT 5'10 HAIR *BLONDE* EYES *BLUE* BUST 32 1/2 WAIST 24 1/2 HIPS 34 1/2 SHOE 10



EDIE WEARS A TULLE
DRESS, COATED
LEATHER PANTIES, BOTH
DOLCE & GABBANA

EDIE CAMPBELL

HEIGHT 5'10 HAIR *BLONDE* EYES *BLUE* BUST 32 1/2 WAIST 24 1/2 HIPS 34 1/2 SHOE 10



EDIE WEARS A SATIN BOMBER
JACKET, VELVET AND JERSEY
JOGGERS, JERSEY BIKINI TOP,
BOTTOM, ALL, CELINE BY HEDI
SLIMANE

EDIE CAMPBELL

HEIGHT 5'10 HAIR *BLONDE* EYES *BLUE* BUST 32 1/2 WAIST 24 1/2 HIPS 34 1/2 SHOE 10



**„WIR
HABEN
BEGONNEN,
UNS ZU
HINTER-
FRAGEN“**

EDIE CAMPBELL Reich-
bestickter Patchwork-Blouson in Oversize,
aus Baumwolle, Leinen und Lammleder, um
21 500 €, von **TOM FORD**.

FOTOS: DANIEL JACKSON
STYLING: CHRISTIANE ARP UND
NICOLA KNELS

79

EDIE CAMPBELL

HEIGHT 5'10 HAIR *BLONDE* EYES *BLUE* BUST 32 1/2 WAIST 24 1/2 HIPS 34 1/2 SHOE 10



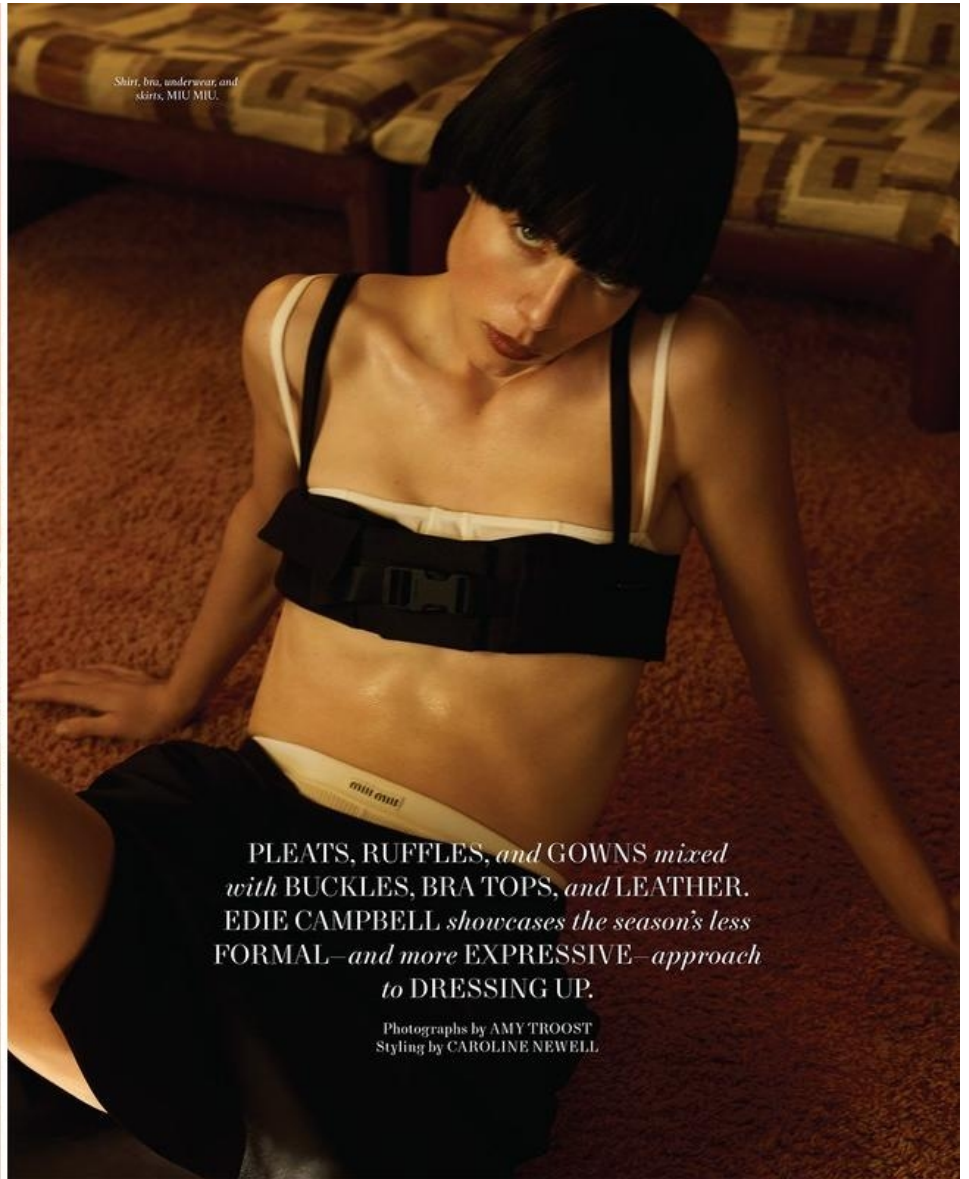
Collier «Rabio» en platine et or jaune sertis de 210 diamants (48 cts) et 15 rubis (24 cts), et boucles d'oreilles «Rabio» en platine et or jaune sertis de 42 diamants (5 cts) et 4 rubis (4 cts), HARRY WINSTON.
 Pendentif «POLICE & SABBASS» Ruby NINA RICCI, PAGE DIE GANSCHE, collier «Résonance» de Cartier en or blanc sertis de diamants tailles baguette et brillant, avec une rabolite taille cousin (70 cts). Boucle d'oreille «Cartier Magicien» en or blanc sertis de deux diamants taille poire, de diamants jaunes taille brillant, de diamants taille baguette, CARTIER. Tunique LOUIS VUITTON.
 Mise en scène Mark Carrasquillo, Coiffure James Peccis pour Oribe, Manucure Brenda Abrial. Productrice North Six, Agence de réalisation Jado Günthardt et Georgia Bebel.

EDIE CAMPBELL

HEIGHT 5'10 HAIR BLONDE EYES BLUE BUST 32 1/2 WAIST 24 1/2 HIPS 34 1/2 SHOE 10



Dress, DOLCE & GABBANA.
Shirt, ÉTERNE. Underwear,
MIU MIU. Socks, FALKE.
Pumps, BALENCIAGA.



Shirt, bra, underwear, and
skirt, MIU MIU.

*PLEATS, RUFFLES, and GOWNS mixed
with BUCKLES, BRA TOPS, and LEATHER.
EDIE CAMPBELL showcases the season's less
FORMAL—and more EXPRESSIVE—approach
to DRESSING UP.*

Photographs by AMY TROOST
Styling by CAROLINE NEWELL

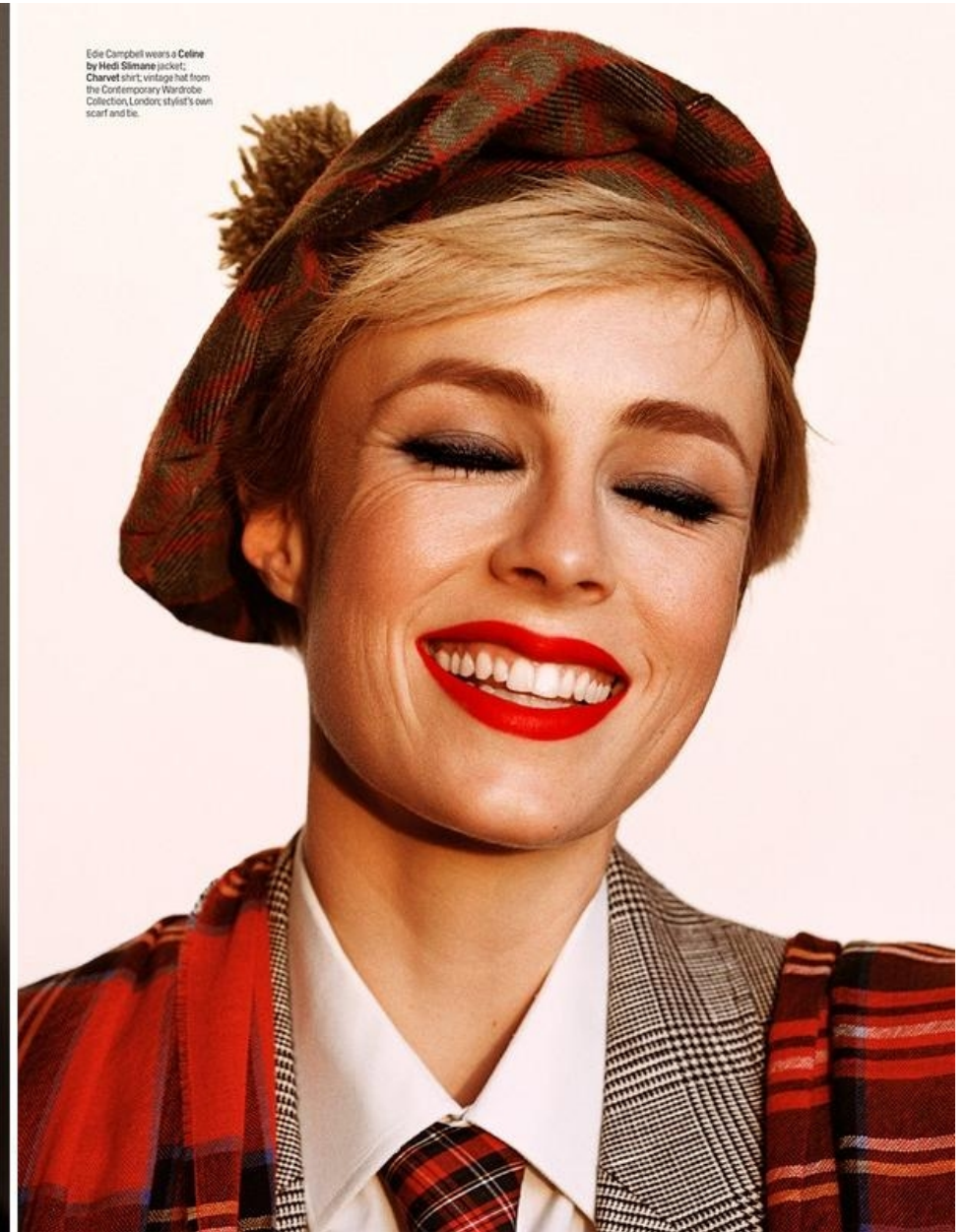
EDIE CAMPBELL

HEIGHT 5'10 HAIR *BLONDE* EYES *BLUE* BUST 32 1/2 WAIST 24 1/2 HIPS 34 1/2 SHOE 10



Edie Campbell wears an Hermès jacket, Charvet shirt, stylist's own earrings and tie.

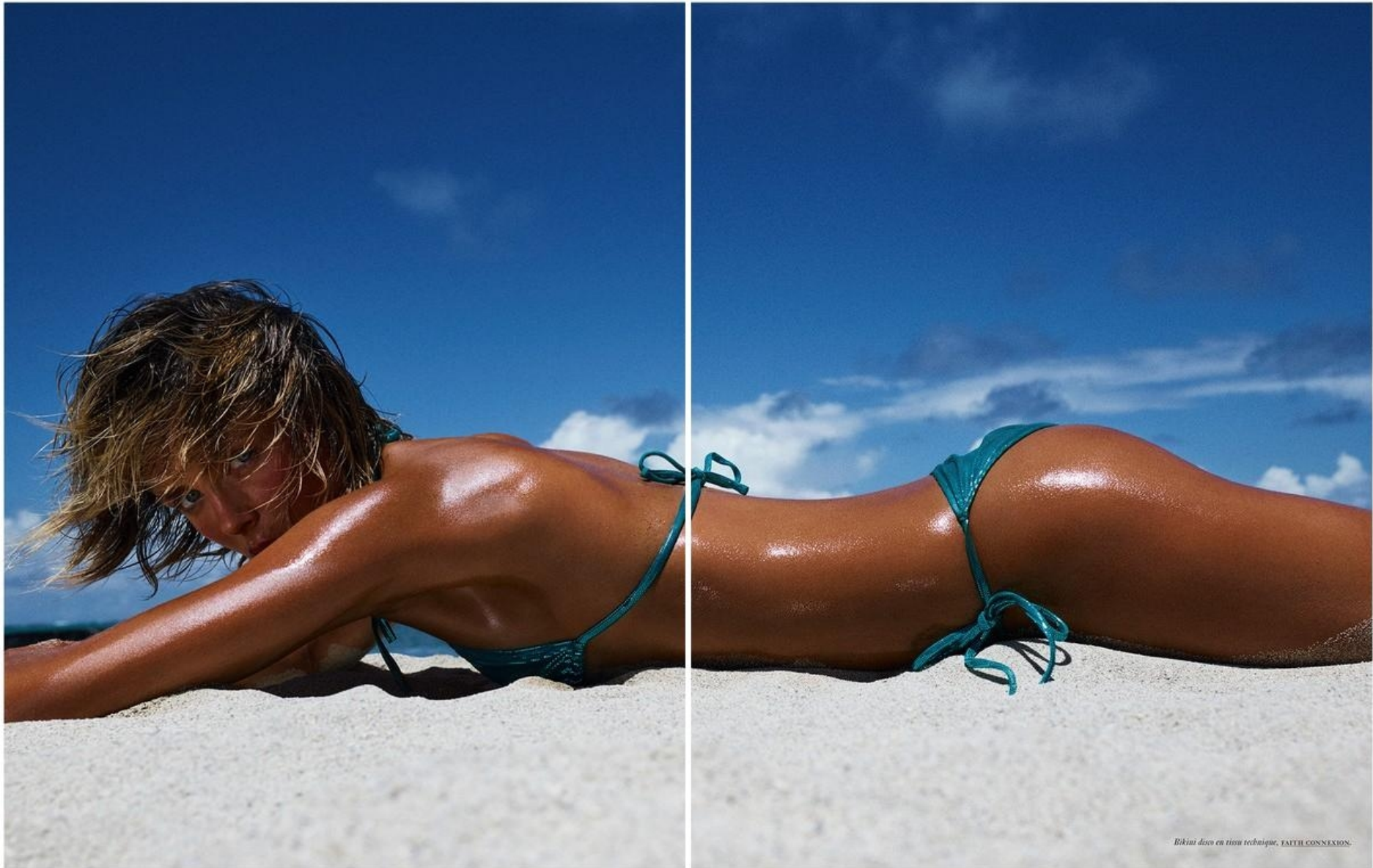
Makeup by Lynsey Alexander at Streets; hair by Anthony Turner at Streets; manicure by Lorraine Griffin; Models: Keawe Akooi, Jean Campbell, and Edie Campbell at DNA Model Management. Casting by Michelle Lee Casting.



Edie Campbell wears a Celine by Hedi Slimane jacket, Charvet shirt, vintage hat from the Contemporary Wardrobe Collection, London; stylist's own scarf and tie.

EDIE CAMPBELL

HEIGHT 5'10 HAIR *BLONDE* EYES *BLUE* BUST 32 1/2 WAIST 24 1/2 HIPS 34 1/2 SHOE 10



Bikini done en tissu technique, TATTEL CONNECTION.

EDIE CAMPBELL

HEIGHT 5'10 HAIR *BLONDE* EYES *BLUE* BUST 32 1/2 WAIST 24 1/2 HIPS 34 1/2 SHOE 10



Culotte en jersey
 et voile plissé vagues,
 PAIS DE SUÈDE.
 Drap de plage
 en épouge, RALPH
 LAUREN HOME.
 Paire de gants,
 maillots une pièce
 en Lycra, ALBERTA
 FERRETTI. Pantalon
 à empilements de cuir
 imprimé «Suisse»,
 BALENCIAGA.
 Ceinture en verre
 coloré à double boucle
 en cristal, SUZI
 ROHER. Lunettes
 de soleil Aciator doré,
 RAY-BAN. Escarpins
 «So Kate» en verre
 coloré, CHRISTIAN
 LOUBOUTIN.



EDIE CAMPBELL

HEIGHT 5'10 HAIR *BLONDE* EYES *BLUE* BUST 32 1/2 WAIST 24 1/2 HIPS 34 1/2 SHOE 10



Bomber en denim à maxi poches, Fendi. Jean Levi's. Boucles d'oreilles, Annelise Michelson. Paire de lunettes, Albardeur et T-shirt en soie, Michael Kors Collection. Jean et boots, Espace Kilowatch. Ceinture Harpo. Boucles d'oreilles en laiton doré, Chloé.



Chemise en popeline de coton et pantalon en lin, Alberta Ferretti. Ceinture en cuir végétal à boucle folk, Saint Laurent pour Anthony Vaccarello. Boucles d'oreilles en laiton argenté, Chloé. Bolo tie Harpo, pair de lunettes, verre en nylon recyclé, T-shirt en coton tie & dye, et pantalon en denim tie & dye, Stella McCartney. Ceinture vintage. Boucle d'oreille océane en résine argent et strass bleu, Balenciaga. Boots Espace Kilowatch.

EDIE CAMPBELL

HEIGHT 5'10 HAIR *BLONDE* EYES *BLUE* BUST 32 1/2 WAIST 24 1/2 HIPS 34 1/2 SHOE 10



EDIE CAMPBELL

HEIGHT 5'10 HAIR *BLONDE* EYES *BLUE* BUST 32 1/2 WAIST 24 1/2 HIPS 34 1/2 SHOE 10



*Feste en sequins entièrement brodés, CHANEL.
Pantalons en cuir nappa argent effet croco, LOEWE.
sac. en vachette, top et jupe en tissu technique et
franges argentées, LOËNE. Escarpins lacés en
veau velours, GIANVITO ROSSI.*



EDIE CAMPBELL

HEIGHT 5'10 HAIR *BLONDE* EYES *BLUE* BUST 32 1/2 WAIST 24 1/2 HIPS 34 1/2 SHOE 10



Dress Versace
Top (worn on neck) APC
Earrings JJ Sander
Bracelets and ring (right) Tiffany & Co.
Ring (left) Marc Deloche
Pen Cartier
Agenda (on table) Hermès



Jacket Celine by Heidi Sliemers
Earrings JJ Sander
Necklace Sarah Madeleine
Bracelet and ring Tiffany & Co.
On eyes Kosas
Brow Pop Dual-Action Defining Pencil
On lips Hermès
Rouge Lip Enhancer
H Rose Abricot

EDIE CAMPBELL

HEIGHT 5'10 HAIR *BLONDE* EYES *BLUE* BUST 32 1/2 WAIST 24 1/2 HIPS 34 1/2 SHOE 10



EDIE CAMPBELL

HEIGHT 5'10 HAIR *BLONDE* EYES *BLUE* BUST 32 1/2 WAIST 24 1/2 HIPS 34 1/2 SHOE 10



EDIE CAMPBELL

HEIGHT 5'10 HAIR *BLONDE* EYES *BLUE* BUST 32 1/2 WAIST 24 1/2 HIPS 34 1/2 SHOE 10



EDIE CAMPBELL

HEIGHT 5'10 HAIR *BLONDE* EYES *BLUE* BUST 32 1/2 WAIST 24 1/2 HIPS 34 1/2 SHOE 10



服饰与美容VOGUE

DECEMBER 2015 十二月号

www.vogue.com.cn



EDIE CAMPBELL

HEIGHT 5'10 HAIR BLONDE EYES BLUE BUST 32 1/2 WAIST 24 1/2 HIPS 34 1/2 SHOE 10



EDIE CAMPBELL

HEIGHT 5'10 HAIR *BLONDE* EYES *BLUE* BUST 32 1/2 WAIST 24 1/2 HIPS 34 1/2 SHOE 10



EDIE CAMPBELL

HEIGHT 5'10 HAIR *BLONDE* EYES *BLUE* BUST 32 1/2 WAIST 24 1/2 HIPS 34 1/2 SHOE 10



MARS 2024 Harper's 4,9 e
BAZAAR
FRANCE

Edie
Campbell

Kate
Moss

Christine
Angot

Margaret
Qualley

Ann
Scott

Beth
Ditto

Marianne
Faithfull...

L'AUDACE
MODE

EDIE CAMPBELL

HEIGHT 5'10 HAIR *BLONDE* EYES *BLUE* BUST 32 1/2 WAIST 24 1/2 HIPS 34 1/2 SHOE 10