

HEIGHT *5'10*
HAIR *DARK BROWN*
EYES *GREEN*
BUST *31*
WAIST *24*
HIPS *34*
SHOE *8*

dna
MODEL MANAGEMENT LLC

555 WEST 25TH ST, 6TH FL NEW YORK, NY 10001 TEL. 212.226.0080 FAX 212.226.7711 dnamodels.com



Ellen wears blazer by *Nina Ricci*, turtleneck by *Beautiful People*, hat by *Miu Miu*, and stylist's own headscarf.

43

ELLEN ROSA



ELLEN ROSA

HEIGHT 5'10 HAIR *DARK BROWN* EYES *GREEN* BUST 31 WAIST 24 HIPS 34 SHOE 8

Make souvenir
jewellery part
of your off-duty
holiday formula
— pompoms plus
stripes equals a
sunny disposition
Off-the-shoulder cotton
top, £345, Dolce &
Gabbana. Pompon
necklace, £145,
Pebble London



131



135

ELLEN ROSA

HEIGHT 5'10 HAIR *DARK BROWN* EYES *GREEN* BUST 31 WAIST 24 HIPS 34 SHOE 8



TO DYE FOR
The joie de vivre is contagious when a tie-dyed tank meets a polka-dot skirt and artfully mismatched earrings, Pomellato earrings and bracelets, pomellato.com. Calvin Klein 205W39NYC top, skirt, and shoes. Calvin Klein, NYC



ELLEN ROSA

HEIGHT 5'10 HAIR *DARK BROWN* EYES *GREEN* BUST 31 WAIST 24 HIPS 34 SHOE 8



Snap up

The Alexander Wang AW18 runway declared Nineties 'dos alive and well. Add an old-school snap clip to either side of a low-slung pony and you're good to go.

GUCCI jacket, £1,600, gucchi.com; £700 (see story)
 FUTURE OZBEK vintage bodysuit, £25, at goldsmithheritage.com
 TILLY SVEAAS necklace, £110 (tillysveaas.com)



Comb cool

Upgrade your ballet bun with the Nineties plastic comb band that you used to sport at school. We'll see you in class.

PHILOSOPHY DI LORENZO SERAFINI top, £179 (philosophyofficial.com); BOTTEGA VENETA coat, £3,550 (bottegaveneta.com); FOREVER 21 headband, £1.50 (forever21.com); TILLY SVEAAS necklace, as before

ELLEN ROSA

HEIGHT 5'10 HAIR DARK BROWN EYES GREEN BUST 31 WAIST 24 HIPS 34 SHOE 8



En la página anterior, traje de baño, de Eres (305 €); y falda de nylon, de Ellery (805 €). En esta página, gabardina (5.900 €) y leggings (900 €), ambos de Céline; y collar de Saint Laurent por Anthony Vaccarello (495 €).

Modelo: Ellen Rosa (Viva Barcelona). Ayudante de realización: Isabel Llanza. Ayudante de fotografía: Pete Hawk. Peluquería y maquillaje: Noelia Corral (Kasteel Artist Management) para Sisley y Moroccanoil. Producción Local: Floater Productions. Agradecimiento: Corralejo Surf School (corralejosurfschool.com).

ELLEN ROSA

HEIGHT 5'10 HAIR DARK BROWN EYES GREEN BUST 31 WAIST 24 HIPS 34 SHOE 8



En esta página, jersey de alpaca, de IRO (890 €); y bikini de H&M (19,99 €). *En la página siguiente,* jersey de lana, de Éditions M.R. para Holiday Magazine (220 €); pantalón de Hugo (179,95 €); y reloj Oyster Perpetual Datejust, de Rolex.

Nota de belleza. Disfrutar del sol es uno de los mayores placeres del verano, y hacerlo sin preocupaciones es posible gracias a las últimas innovaciones en protectores *waterproof*, como las de la bruma Soleil Bronzer SPF 50, de Lancôme, que, además de proteger, hidrata en profundidad y previene el envejecimiento prematuro.



En la primera página, Ellen Rosa lleva anorak de satén, de Valentino; y braga de Calzedonia (20 €). *En la página anterior,* parka de Hermès (2.750 €); traje de baño, de Women'secret (39,99 €); zapatillas de piel, de Céline (690 €); y pulsera de Roxanne Assoulin (60 €). *En esta página,* mono de neopreno, de Oysho (139 €). *En la página siguiente,* traje de baño de Énfasis Black para El Corte Inglés (110 €); toalla Jeux d'Animaux, de Hermès (420 €); y pulsera Positano, de Aurélie Bidermann (240 €).

ELLEN ROSA

HEIGHT 5'10 HAIR DARK BROWN EYES GREEN BUST 31 WAIST 24 HIPS 34 SHOE 8



COME TOGETHER
 FLAUNT YOUR FIGURE WHILE YOU FLEX YOUR POWER IN A PLEATED PEPLUM BUSTIER OVER A FLORAL-STREWN DRESS. GIVENCHY BY RICCARDO TISCI FAUX-LEATHER TOP (\$2,549), TURTLENECK, AND DRESS, GIVENCHY, NYC. GUCCI BERET, TOM FORD ANKLE BOOTS, ON TURNER, PAUL SMITH PANTS.

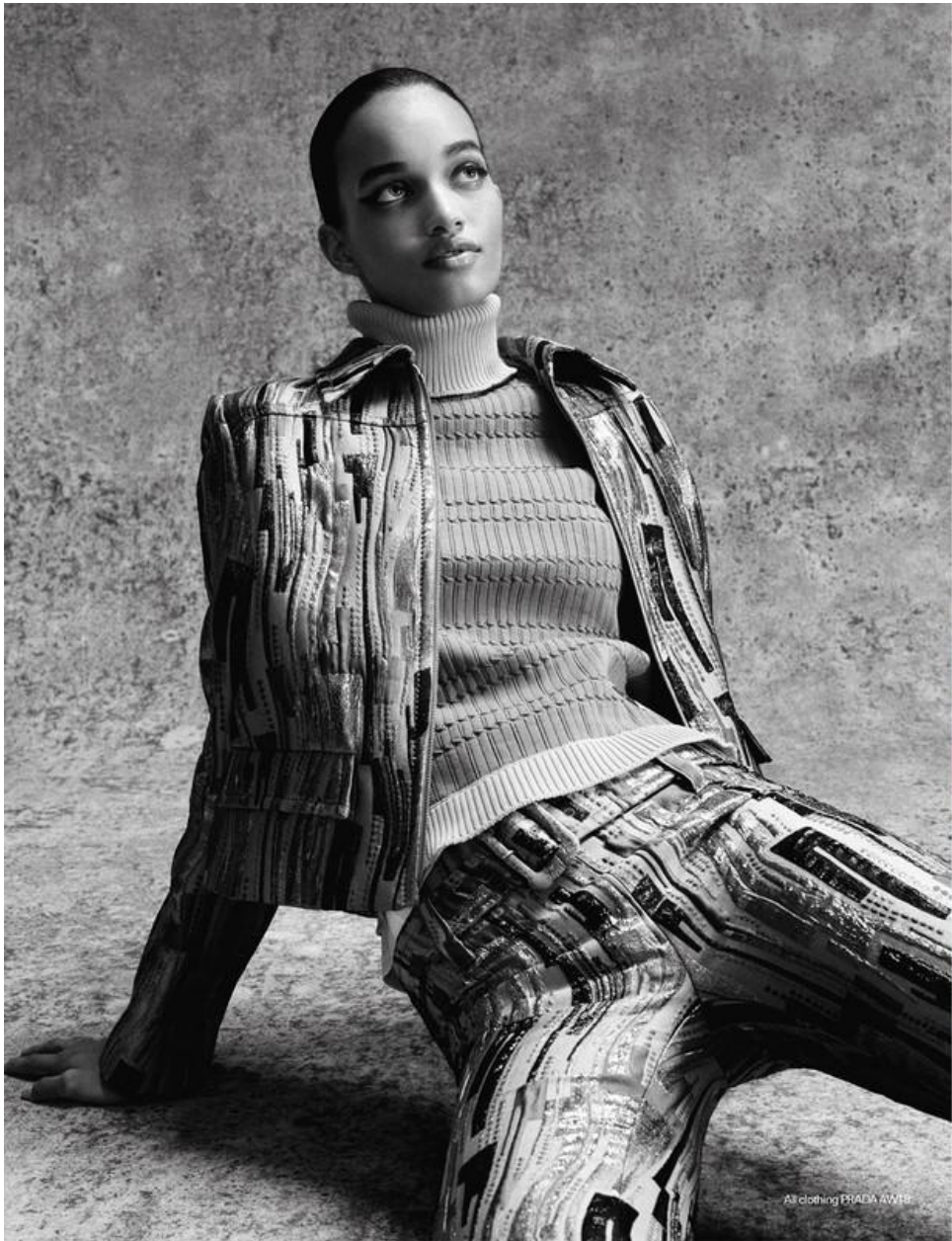


STAND BY ME
 A STURDY CHIC BOOT BELOW GRAPHICS, PLEATS, AND TEXTURE IS A SURE WAY TO UNDERScore YOUR STYLE FROM THE GROUND UP. CELINE CROPPED SWEATER (\$1,000), TURTLENECK (\$1,200), AND LEATHER-DETAILED SKIRT (\$2,850). CELINE, NYC. HAT ATTACK BERET, ON TURNER, PAUL SMITH SUIT AND SHIRT, BOSS SWEATER. IN THIS STORY: HAIR, ODILE GILBERT; MAKEUP, STEPHANE MARAIS; DETAILS, SEE IN THIS ISSUE.

© 2014 ARTISTS RIGHTS SOCIETY (ARS), NEW YORK/CELEP. MODELS: ETT ELLSON, JACEY CANTALINI FOR THE MAGNET AGENCY. PRODUCTION: MARIO TESTINO. LOCAL PRODUCTION: JOHANA RODRIGUES.

ELLEN ROSA

HEIGHT 5'10 HAIR DARK BROWN EYES GREEN BUST 31 WAIST 24 HIPS 34 SHOE 8



All clothing PRADA AW18



Hair
James Daley using
Fudge Professional

Makeup
Mary Jane Frost at
One Represents using
Bobbi Brown Cosmetics

Lighting Assistant
Mathias Ribe

Digital Technician
Morgan Brown

Fashion Assistant
Rosie Sykes

Model
Ellen Rosa at Viva

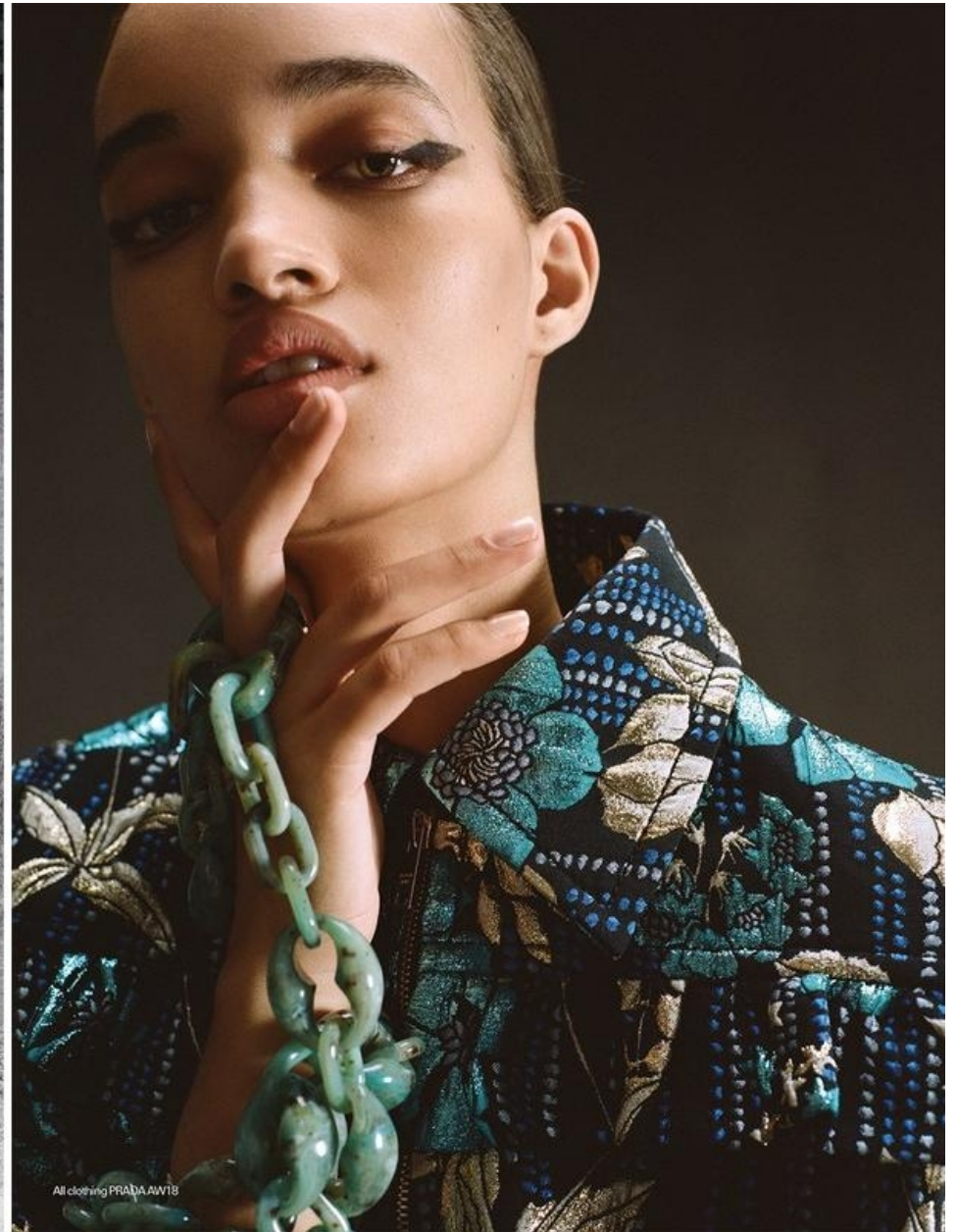
All clothing PRADA AW18

ELLEN ROSA

HEIGHT 5'10 HAIR *DARK BROWN* EYES *GREEN* BUST 31 WAIST 24 HIPS 34 SHOE 8



All clothing PRADA AW18



All clothing PRADA AW18

ELLEN ROSA

HEIGHT 5'10 HAIR *DARK BROWN* EYES *GREEN* BUST 31 WAIST 24 HIPS 34 SHOE 8



ELLEN ROSA

HEIGHT 5'10 HAIR *DARK BROWN* EYES *GREEN* BUST 31 WAIST 24 HIPS 34 SHOE 8



FINE FEATHER
 Chanel's coat, which looks as though the wearer just emerged from a pile of gilt foliage, welcomes a bit of accessorizing. Put a pin in it—in this case, a single earring rather than a brooch. **THIS PAGE:** Model Ellen Rosa wears Chanel's woolly coat with metallic-leaf applique; select Chanel stores. **ELSEWHERE:** Model Imaan Hammam (far left) wears a Calvin Klein 205W39NYC coat (\$3,900), sweater (\$990), and skirt (\$4,300); Calvin Klein NYC. Model Fai Fai Sun wears a Fendi coat; fendi.com. Adam Lippes cardigan, \$890, adamlippes.com. Ulla Johnson dress, \$990; ullajohnson.com. Fashion Editor: Tonne Goodman.



SECOND SKIN

Can you mix zebra, python, and shearing? If you're wearing Tom Ford, certainly. **THIS PAGE:** Rosa fawns over fauna in Tom Ford snakeskin-print pants (\$2,200), sequined sweatshirt (\$3,990), shearing coat, leather headband, and kitten heels; select Tom Ford stores. **Dinosaur Designs** earrings. **OPPOSITE PAGE:** Eighteenth-century-inspired frock coats make for the prettiest of outerwear options. Hammam (left) wears a **Dolce & Gabbana** velvet embroidered coat (\$3,995), shirt (\$425), and pants (\$995); select Dolce & Gabbana stores. Champion, meanwhile, looks every bit the forest nymph in a **Dior** floral-embroidered coat and gossamer tulle dress; select Dior stores. In this story: hair, Garren for R+Co. Haircare; makeup, Susie Sobol. Details, see in This Issue.

ELLEN ROSA

HEIGHT 5'10 HAIR DARK BROWN EYES GREEN BUST 31 WAIST 24 HIPS 34 SHOE 8



This page jumpsuit by
Isabel Marant, \$1,200; belt
by Saint Laurent, \$270; boots
by Philosophy di Laurent
Scarfino, \$990; dress worn
under jumpsuit by Dion
Lee, \$1,100; earrings by
Ellagren, \$160 (1,000); brooch
by New York Vintage, \$450
Opposite: waistcoat by
Emporio Armani, \$450; hat
by Eric Javits, \$750



This page: coat, \$7,000,
and top, \$945; both by
Balmain; earrings by
Moose, \$225; ring by
Tiffany & Co., \$4,000
Opposite: dress by Stella
McCartney, \$1,425; at Net
A Porter.com; belt by Zina
Barpe, \$745; boots by
Giuseppe Zanotti Design,
\$1,495; earrings by Saint
Laurent by Anthony
Vaccaro, \$895; brooches
from top, \$450; by
Benetton by Isaac
Mizrahi, \$200; by C.Z. by
Kenneth Jay Lane, \$440; by
Ellagren, \$180 (1,000); by Ben
etton by Isaac Mizrahi,
\$295; by Ellagren, \$200 (1,000)

ELLEN ROSA

HEIGHT 5'10 HAIR *DARK BROWN* EYES *GREEN* BUST 31 WAIST 24 HIPS 34 SHOE 8



ELLEN ROSA

HEIGHT 5'10 HAIR *DARK BROWN* EYES *GREEN* BUST 31 WAIST 24 HIPS 34 SHOE 8



ELLEN ROSA

HEIGHT 5'10 HAIR DARK BROWN EYES GREEN BUST 31 WAIST 24 HIPS 34 SHOE 8



**GO WITH
THE FLOW**
JUST BECAUSE
THE SCALED-
DOWN PARKA
IS SPORTY
DOESN'T MEAN
EVERYTHING
ELSE CAN'T BE
SOFT AND FLUID.



SHORT ORDER
THE COZINESS OF
THIS NEW CROPPED
JACKET SHAPE
MEANS IT CAN GO
ONWARD EVEN AS
TEMPERATURES
PLUNGE DOWNWARD.

ELLEN ROSA

HEIGHT 5'10 HAIR *DARK BROWN* EYES *GREEN* BUST 31 WAIST 24 HIPS 34 SHOE 8



Strong brows
 have an outdoorsy
 elegance. Groom with
 Charlotte Tilbury Brow
 Lift, \$22.50, to elevate
 your natural look
This page: cotton T-shirt, \$70,
 Tommy Hilfinger Denim, Silk
 dress, \$525, Isabel Marant

Shelve the sheer
 in favour of Ralph
 Lauren's high-voltage
 jersey drapery
Opposite: black jersey evening
 dress, \$3,900, Ralph Lauren
 Collection, white cropped
 cotton top, from \$290,
 Blumarine, Groggrain sandals,
 as before, Sunglasses, \$165,
 Karen Walker, Pompom
 necklace, stylist's own



Swing state:
 when it comes
 to beach-bound
 skirts, play it
 straight. White
 selvedge denim
 looks cool in
 any climate

Opposite: bra top,
 from \$305, Blumarine,
 Cotton skirt, \$350,
 Studio Nicholson,
 Slip-on sneakers, \$65,
 Fitflop, Ribbon, worn
 as ankle ties, from \$1
 a metre, VV Rouleaux,
 Cotton duffel bag, \$395,
 Toogood, at Dover
 Street Market

Water stays out,
 wave stays in:
 the only match
 for Miu Miu's
 two-piece is
 a petal-strewn
 bathing hat

This page: black satin
 bikini, \$690, Black
 palette bathing cap,
 \$850, Both Miu Miu,
 Leather sandals, \$740,
 Proenza Schouler, at
 Net-a-Porter.com

ELLEN ROSA

HEIGHT 5'10 HAIR DARK BROWN EYES GREEN BUST 31 WAIST 24 HIPS 34 SHOE 8



Nostalgia-laden gingham feels nonchalant in the season's overblown proportions – try Toga's open-back iteration with boyish shorts
This page: black and white gingham top, £325, Toga, at Matchesfashion.com; Red vintage shorts and black belt, from a selection, Beyond Retro

Meet your new beach-bag essentials: a black shirt and angular dark glasses
Opposite: cropped cotton shirt, from £340, Blumarine; Bikini shorts, £66, La Perla; Leather sandals, £740, Proenza Schouler, at Net-a-Porter.com; Bathing cap, £650, Min Min; Sunglasses, from a selection, Michael Kors Collection

ELLEN ROSA

HEIGHT 5'10 HAIR DARK BROWN EYES GREEN BUST 31 WAIST 24 HIPS 34 SHOE 8



This page: Ellen is wearing a swimsuit (worn around her neck, throughout) from COSTUME STUDIO. Velvet jumpsuit (throughout) by MARTA JAKUBOWSKI. And fine tulle vest, detachable collar (both throughout) and leather earring by ANN DEMEULEMEESTER. Opposite page: Lineisy is wearing a repurposed wetsuit windbreaker, printed socks (both throughout) and leather sandals by MAISON MARGIELA. Laced bonded cotton jacket (worn on her shoulder) and skirt (both throughout) by CRAIG GREEN. Patterned silk dress (worn on her right arm, throughout) by GUCCI. Plastic poncho (worn around her waist) from COSTUME STUDIO. And detachable collar by DSQUARED2



ELLEN ROSA

HEIGHT 5'10 HAIR DARK BROWN EYES GREEN BUST 31 WAIST 24 HIPS 34 SHOE 8



VOGUE BEAUTY

Sunset Hour

ปิ้งตุ๋นโม้ที่จางยั้งในตาจนลืม
ที่ตบองบวมมีพิศในผอง
ท่าเต้นบนแท่นที่ดุจดังในดวงจันทร์
อย่างลึนเรื่อทอง เมื่อเธียให้เข้ากัน
จะชวนให้นึกถึงสิ่งของที่จางฟ้า
ช่วงพระอาทิตย์ใกล้ตกดิน เพาะเป็น
สุดตลกจากกลางคืน และเพื่อให้
ถ่ายรูปออกมาแล้วดูโคตร
เปล่งประกาย ให้โอ้เป็นฉายาแล้วไว้
เมื่อครบเรื่องก็จบปิ้งตุ๋นกลองตี

MAKEUP: แต่งหน้าเป็นสไตล์ที่ดูขบขัน
ด้วยอายแชโดว์สีน้ำตาลอมส้ม
จากพาเลตต์ Matte Obsessions
Eyeshadow Palette จาก HUDA
BEAUTY โยกละดูอย่างดูโอ้สีส้ม
เป็นต้นตามด้วยลิปสติกตามเป็นใน
พาสเทลสีม่วงที่มันในบริเวณล่าง
จากตัวใช้ลิปสติกอายแชโดว์สีทอง
 Eyes to Remember สี Amber Gold
 จาก CHARLOTTE TILBURY เน้นลวด
บนที่ใกล้กลางเป็นอีกตามด้วยคิ้วสีน้ำ
เงินที่มัน คอสเมติกส์ด้วยลิปสติก
 Rouge Hermès, Shiny Lipstick
 สี Orange Capucine จาก HERMÈS
 สีนี้เข้า จุกกระโปรงที่มันเป็น
ตามยาวที่มันที่เข้าข้างบนที่คิ้วที่น้ำเงิน
สีทองที่มัน จาก HERMÈS



VOGUE BEAUTY

Blue Rush

ฉายาโอ้ดีที่จางห่างจางไกลจนลืม
สามารถเน้นแต่งตาให้จางทุกหลาย
ยกต้องอย่างจางในเค้าน่ามีกับ
ความระบือที่ให้ความจางดูเป็นแนว
ด้วยกรเนนเงให้สีจางยาวไปทาง
หางตา ทำออกมาให้ดูเป็นจุด
ที่เปลือย คุมเงจางแล้วสีแล้ว
ประกายอันเมอริ่งเรื่อเก๋จาง

MAKEUP: แต่งหน้าเป็นสไตล์ Always
อัน Obsessed Hues Eye Primer
จาก RARE BEAUTY ที่จางใช้
จางใช้มาด้วยสีเหลืองเป็นต้น แต่งตา
ด้วยอายแชโดว์สีฟ้าจากพาเลตต์
 Motherhip Eyeshadow Palette
 จาก PAT McGRATH LABS ใช้แต่ง
แต่งตาให้ดูเป็นอีกตามแล้วจาง
ใช้ลิปสติกตามด้วยลิปสติก จากมัน
ปิ้งตุ๋นที่โอ้จางอย่างด้วยลิปสติก
 Unlocked Instant Extensions
 Mascara จาก HOURGLASS
 สีนี้เข้า จึงจางกับแนวขาวที่มัน
ปลายจางมี มันในบริเวณ จาก GIVENCHY
 สีจางกับมันที่จางปิ้งตุ๋น
 จาก SEAMAN SCHEPES

ELLEN ROSA

HEIGHT 5'10 HAIR DARK BROWN EYES GREEN BUST 31 WAIST 24 HIPS 34 SHOE 8



ADEAM

DESIGNER: HANAKO MAEDA
FOUNDED: 2012

CF: STUDIED ART HISTORY AT
COLUMBIA UNIVERSITY. INTERNEED
AT VOGUE. AMONG OTHERS. VICE
PRESIDENT FOR THE JAPANESE
FASHION HOUSE FOXEY IN TOKYO.

INSPIRATION: TRADITIONAL
JAPANESE CULTURE AND NEW
YORK URBAN SENSIBILITIES.

GREATEST ACCOMPLISHMENT:
DESIGNING THE COSTUMES
FOR THE NEW YORK CITY
BALLET'S 2015 FALL GALA.
GOAL: I'D LOVE TO COLLABORATE
WITH LEGENDARY JAPANESE
ARTIST YAYOI KUSAMA.



ELLEN ROSA

HEIGHT 5'10 HAIR DARK BROWN EYES GREEN BUST 31 WAIST 24 HIPS 34 SHOE 8



ELLEN ROSA

HEIGHT 5'10 HAIR *DARK BROWN* EYES *GREEN* BUST 31 WAIST 24 HIPS 34 SHOE 8