

HEIGHT *5'10 1/2*

HAIR *BLONDE*

EYES *BLUE*

BUST *31*

WAIST *24*

HIPS *34 1/2*

SHOE *10*

dna
MODEL MANAGEMENT LLC

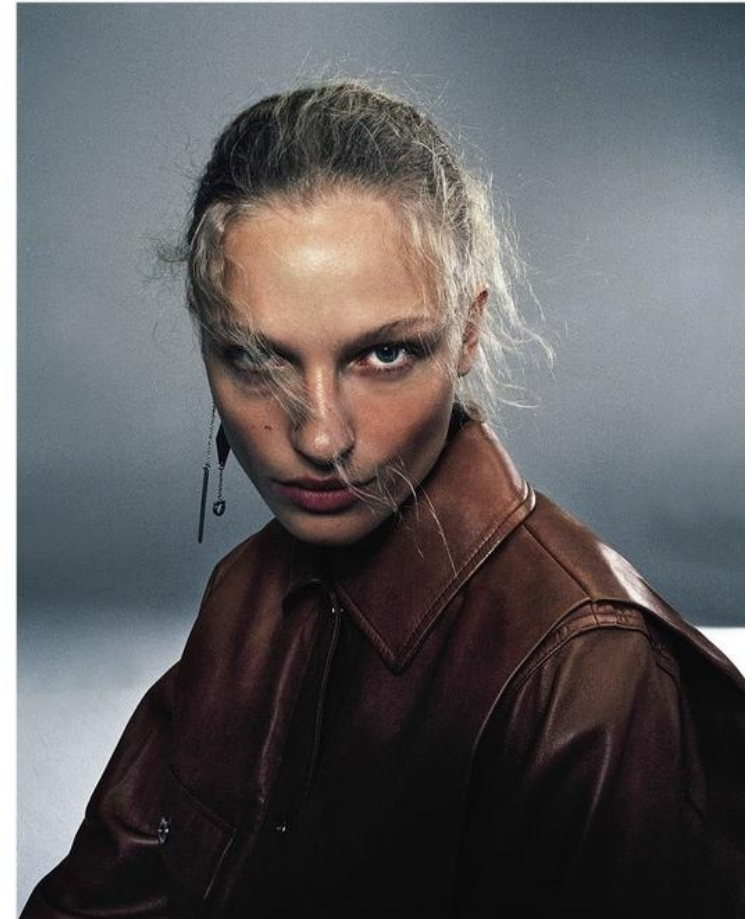
555 WEST 25TH ST, 6TH FL NEW YORK, NY 10001 TEL. 212.226.0080 FAX 212.226.7711 dnamodels.com



FREDERIKKE SOFIE



ALL CLOTHING AND ACCESSORIES FROM THE SALVATORE
FERREGAMO SPRING/SUMMER 2014 COLLECTION



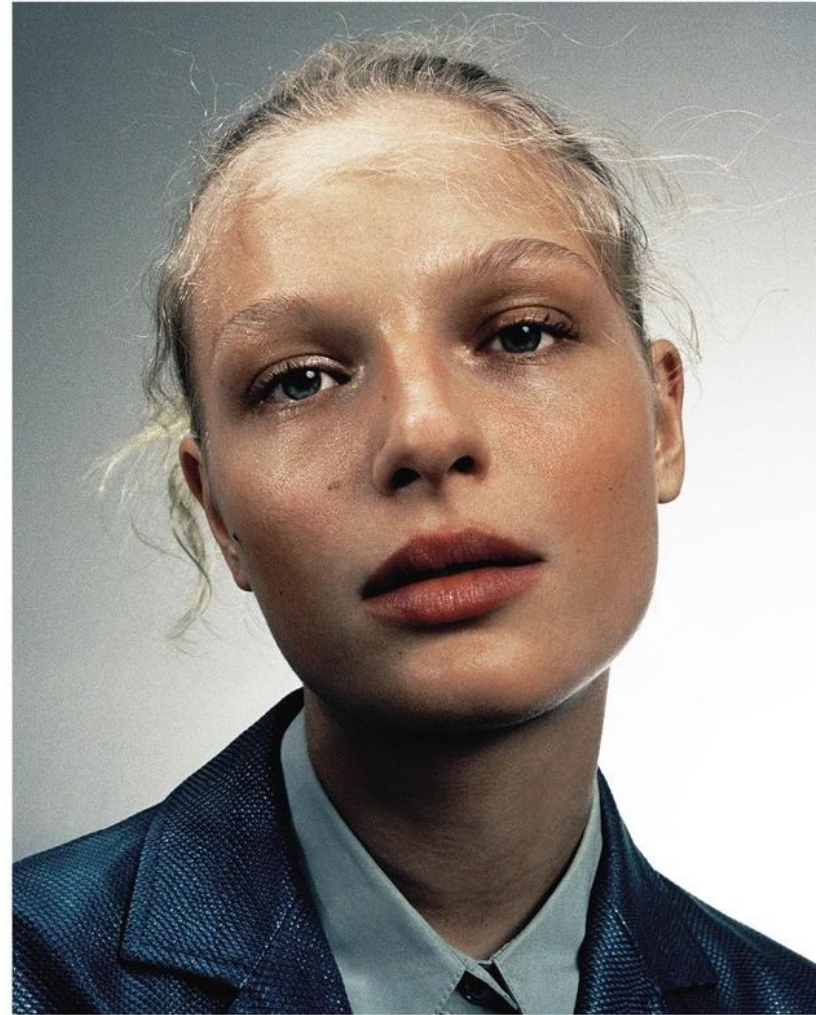
Innovative, intuitive and innately Italian – the inimitable leather goods house sees its legacy explored by Paul Andrew in his sophomore season as creative director for women's collections

FREDERIKKE SOFIE

HEIGHT 5'10 1/2 HAIR *BLONDE* EYES *BLUE* BUST 31 WAIST 24 HIPS 34 1/2 SHOE 10



HAIR: LOUIS DREYFUS AT MANAGEMENT ARTISTS USING BUNBLE AND BUNBLE. MAKE-UP: MATTHIAS VAN HOFF AT MANAGEMENT ARTISTS USING MAC. MODEL: FREDERIKKE SOFIE AT VIVA PARIS. CASTING: NOAH BHELLEY AT STREETERS. PHOTOGRAPHIC ASSISTANTS: HUGO FAZT AND RENAUD MOHEN. STYLING ASSISTANTS: REBECCA PERLHOFER AND ANNE POLIER. PRODUCTION: THE ART BOND



FREDERIKKE SOFIE

HEIGHT 5'10 1/2 HAIR *BLONDE* EYES *BLUE* BUST 31 WAIST 24 HIPS 34 1/2 SHOE 10



Minikleid aus Baumwollpopeline in dunklem Beige, um 990 €, plus passende Ballonärmel mit schwarzen Schleifen zum Darüberziehen, um 650 €, und roter Penciskirt aus Wollcrépe, um 1190 €, von **MARNI**.

238

VOGUE SEPTEMBER 2016



Hellbau-weiß gestreiftes Top aus Baumwollpopeline mit weitem Arm, um 490 €, von **A.W.A.K.E.**

242

VOGUE SEPTEMBER 2016

FREDERIKKE SOFIE

HEIGHT 5'10 1/2 HAIR *BLONDE* EYES *BLUE* BUST 31 WAIST 24 HIPS 34 1/2 SHOE 10



FULL TRANSPARENCY
Delicate lace reveals just enough to be demure. Valentino blouse and skirt, Balenciaga bra and shoes and Tiffany & Co. earrings and pendant.



THE WHITE ALBUM
Harmonize unexpected pairings like a sheer dress over similarly diaphanous pants with neutral tones. Michael Kors Collection dress, The Row pants, Balenciaga bracelets and Tiffany & Co. earrings and pendants.

FREDERIKKE SOFIE

HEIGHT 5'10 1/2 HAIR *BLONDE* EYES *BLUE* BUST 31 WAIST 24 HIPS 34 1/2 SHOE 10



ХЛОПЧОВЫЙ КЕЙП. **NINA RICCI**. ШЕЛКОВЫЕ ТРУСЫ. **JIL SANDER**. КОЛЬЕ ИЗ БЕЛОГО ЗОЛОТА С БЕЛЫМИ И ЖЕЛТЫМИ БРИЛЛИАНТАМИ. **GRAFF**.
 На странице слева:
 ШЕЛКОВОЕ ПЛАТЬЕ. **JIL SANDER**. БОСОНОЖКИ ИЗ ПЛАСТИКА И КОЖИ. **VALENTINO**. СЕРЬГИ ИЗ БЕЛОГО И РОЗОВОГО ЗОЛОТА С ИЗУМРУДАМИ, КОРАЛЛАМИ И БРИЛЛИАНТАМИ. **DE GRISOGONO HIGH JEWELLERY**.

THEMA FESTE

129

128



ПРИЧЕСКА: LAURENT PHILIPPON/CALLISTE. МАКИЯЖ: HELENE VASNER/ARTLIST PARIS. МАНЬЮР: CHRISTINA SONRAD/CALLISTE. МОДЕЛЬ: FREDERIKKE SOFIE/VIVA PARIS. АССИСТЕНТ ФОТОГРАФА: SERGI HERNANDEZ CASALS. АССИСТЕНТ СТИЛИСТА: LAURA ALVAREZ. ПРОДЮСЕРЫ: ELENA SEROVA, JULIA MELKONOVA. АССИСТЕНТ ПРОДЮСЕРА: LUCIA GARATE.

FREDERIKKE SOFIE

HEIGHT 5'10 1/2 HAIR BLONDE EYES BLUE BUST 31 WAIST 24 HIPS 34 1/2 SHOE 10



КОЖАНЫЙ ЖИЛЕТ, КРУЖЕВНОЙ ТОП, ВСЕ **MIU MIU**. СЕРЬГИ ИЗ РОЗОВОГО ЗОЛОТА С САФИРАМИ И БРИЛЛИАНТАМИ, **CHOPARD**.
На странице слева:
 ПЛАТЬЕ ИЗ ШЕРСТИ С ПОЛИАМИДОМ, **LOEWE**. БРА И ТРУСЫ, **INTIMISSIMI**. СЕРЬГИ ИЗ СМОЛЫ И МЕТАЛЛА СО СТРАЗАМИ, **CHANEL**.



ПЛАТЬЕ ИЗ ТЮЛЯ, РАСШИТОЕ БИСЕРОМ, **SIMONE ROCHA**. СЕРЬГИ ИЗ БЕЛОГО И РОЗОВОГО ЗОЛОТА С ИЗУМРУДАМИ, КОРАЛЛАМИ И БРИЛЛИАНТАМИ, **DE GRISOGONO HIGH JEWELLERY**.
На странице справа:
 ПЛАТЬЕ ИЗ АЦЕТАТА С ВИСКОЗОЙ, РАСШИТОЕ ИСКУССТВЕННЫМ ЖЕМЧУГОМ, **MOTHER OF PEARL**. БОСОНОЖКИ ИЗ МЕТАЛЛИЗИРОВАННОЙ КОЖИ, **MIU MIU**. ЗОЛОТЫЕ КОЛЬЕ И КОЛЬЦО **LOU PROTESTEUR** С ЖЕМЧУГОМ И БРИЛЛИАНТАМИ, ВСЕ **CHANEL FINE JEWELRY**.

123

126

THEMA TESTE

FREDERIKKE SOFIE

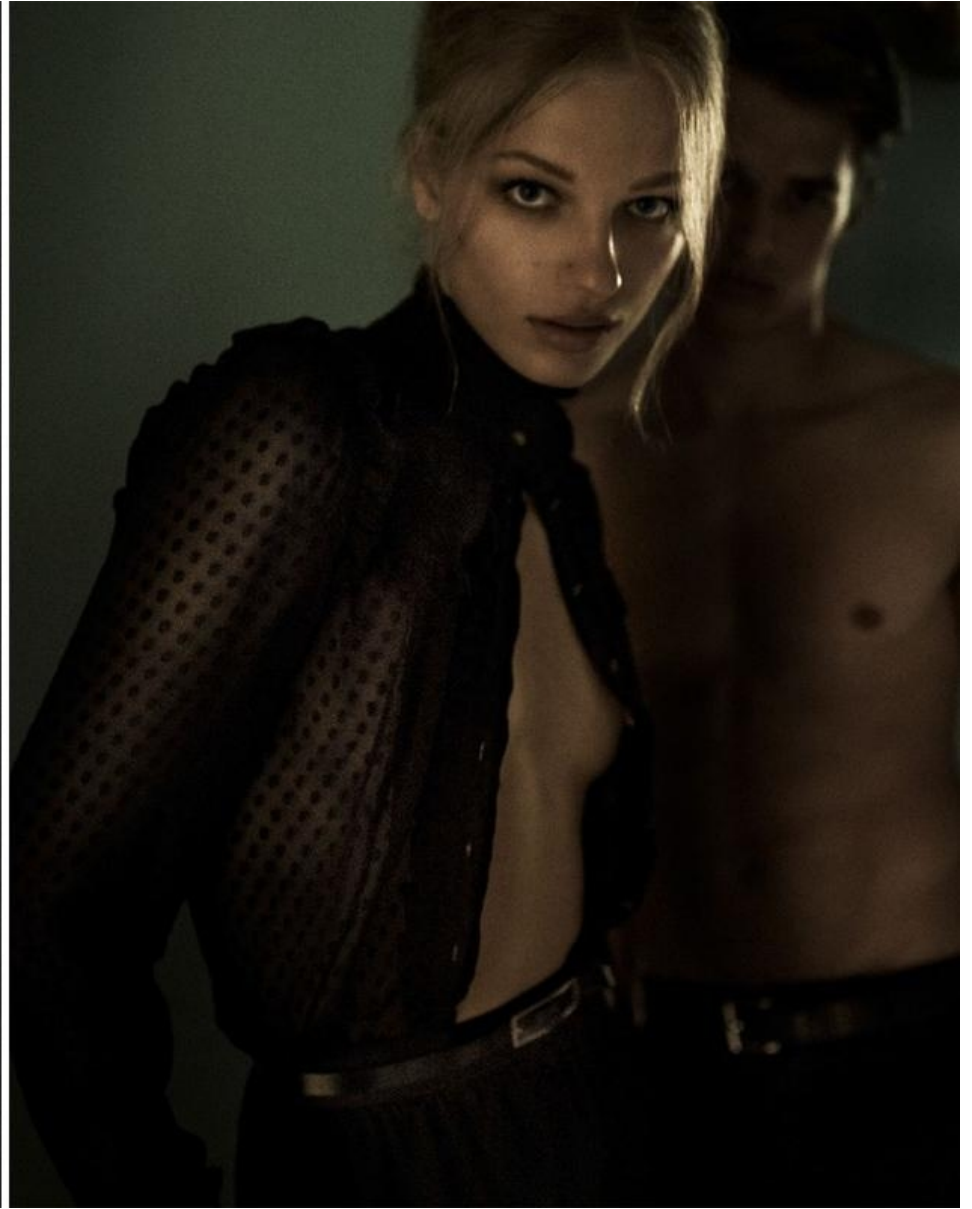
HEIGHT 5'10 1/2 HAIR *BLONDE* EYES *BLUE* BUST 31 WAIST 24 HIPS 34 1/2 SHOE 10



CITY SLICKER
Sharp cuts make pieces urbane rather than mundane, Dior Haute Couture jacket and pants. Opposite: Alexandre Vauthier Couture dress and net stockings. Model, Frederikke Sofie at DNA; hair, Esther Langham; makeup, Romy Soleimani; manicure, Rina Romain. For details see Sources, page 160.

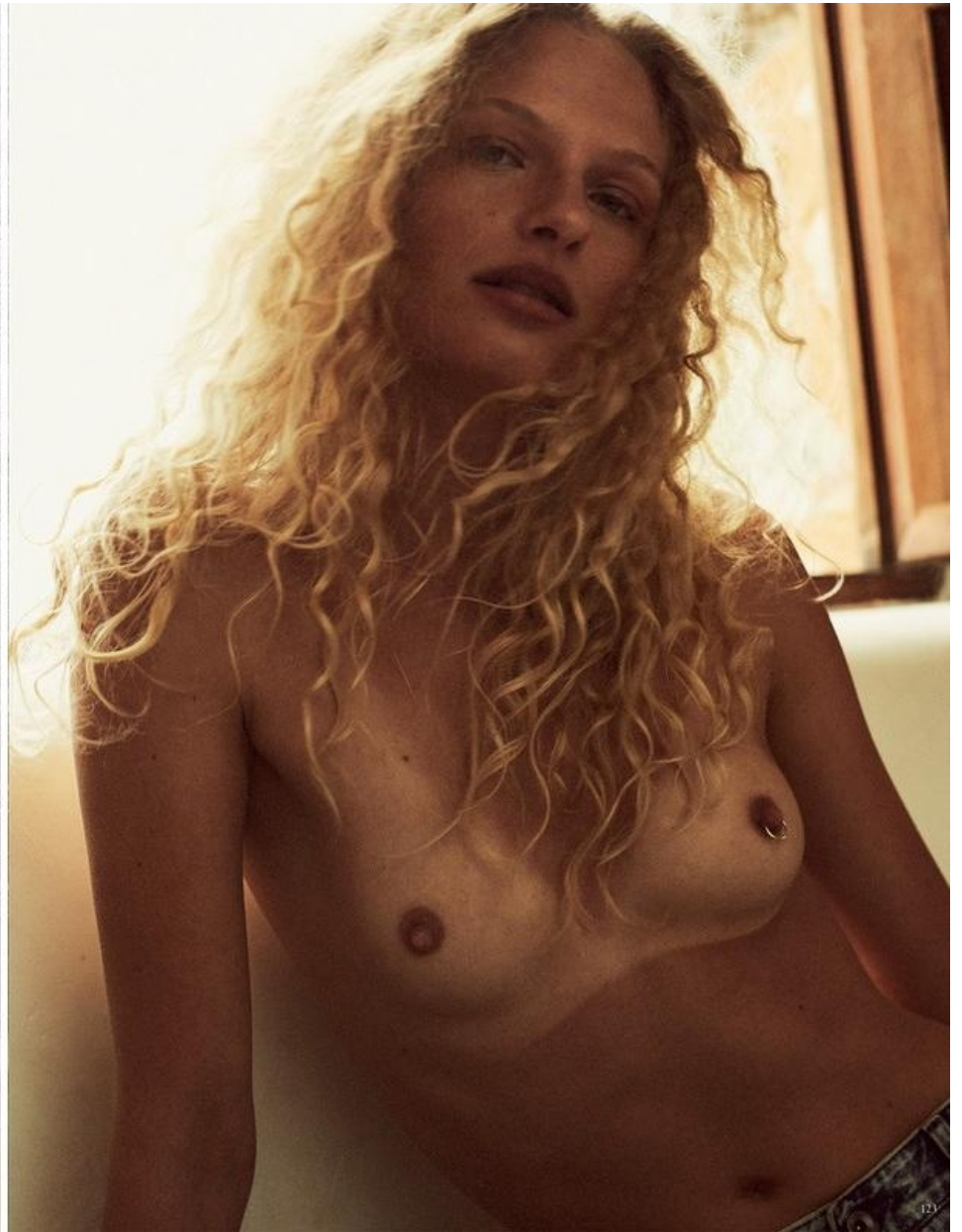
FREDERIKKE SOFIE

HEIGHT 5'10 1/2 HAIR *BLONDE* EYES *BLUE* BUST 31 WAIST 24 HIPS 34 1/2 SHOE 10



FREDERIKKE SOFIE

HEIGHT 5'10 1/2 HAIR *BLONDE* EYES *BLUE* BUST 31 WAIST 24 HIPS 34 1/2 SHOE 10



FREDERIKKE SOFIE

HEIGHT 5'10 1/2 HAIR BLONDE EYES BLUE BUST 31 WAIST 24 HIPS 34 1/2 SHOE 10



249



250

FREDERIKKE SOFIE

HEIGHT 5'10 1/2 HAIR *BLONDE* EYES *BLUE* BUST 31 WAIST 24 HIPS 34 1/2 SHOE 10



FREDERIKKE SOFIE

HEIGHT 5'10 1/2 HAIR *BLONDE* EYES *BLUE* BUST 31 WAIST 24 HIPS 34 1/2 SHOE 10



JACKET VIVIENNE WESTWOOD AND BROOCH BY IRADJ MOINI. OPPOSITE PAGE: VISOR WORN AS HAT BY Y3, STRIPED OVERSIZE TRENCH COAT AND PANTS BY Y/PROJECT AND MOVEN LEATHER SHOES BY CÉLINE.

FREDERIKKE SOFIE

HEIGHT 5'10 1/2 HAIR *BLONDE* EYES *BLUE* BUST 31 WAIST 24 HIPS 34 1/2 SHOE 10



FREDERIKKE SOFIE

HEIGHT 5'10 1/2 HAIR *BLONDE* EYES *BLUE* BUST 31 WAIST 24 HIPS 34 1/2 SHOE 10

THE OBSERVERS

05/31/2017

**THE CONTEMPORARY ROLLNECK
OVERSIZE YOUR KNITS IN RED**

Frederikke wears a red wool oversized rollneck sweater, Balenciaga. *Photography by Mark Keon. Styling by Malina Joseph Gilchrist.*



HAIR BY CHI WONG @ MANAGEMENT+ARTISTS. MAKEUP BY CLARA O'SHEA @ LGL.

118 SELF SERVICE NY/FALL/WINTER 2017

THE OBSERVERS

05/31/2017

**THE CORD SUIT
MAKE YOUR POINT IN CORDUROY**

Frederikke wears a brown corduroy jacket, trousers, gray v-neck sweater, blue cotton shirt, all, Prada. Orange-and-black geometric leather belt, Wales Bonner. *Photography by Mark Keon. Styling by Malina Joseph Gilchrist. Hair by Chi Wong @ Management+Artists. Makeup by Clara O'Shea @ LGL. Manicure by Julie Kandalec @ Bryan Bantay and Nanko Saito @ Artist. Models: Julia Bergsjoeff @ Yva Paris, Frederikke Sofie @ Yva Paris and Kiki Wilkens @ IMG. Photographic assistance by Matt Borkowski and Ryan Petrus. Styling assistance by Claire Tong. Hair assistance by Patricia Silva. Makeup assistance by Louise O'Neill. Production by Ryan Bianchi @ Artist. Casting by ML McCarthy @ Urban Productions NYC.*



119 SELF SERVICE NY/FALL/WINTER 2017

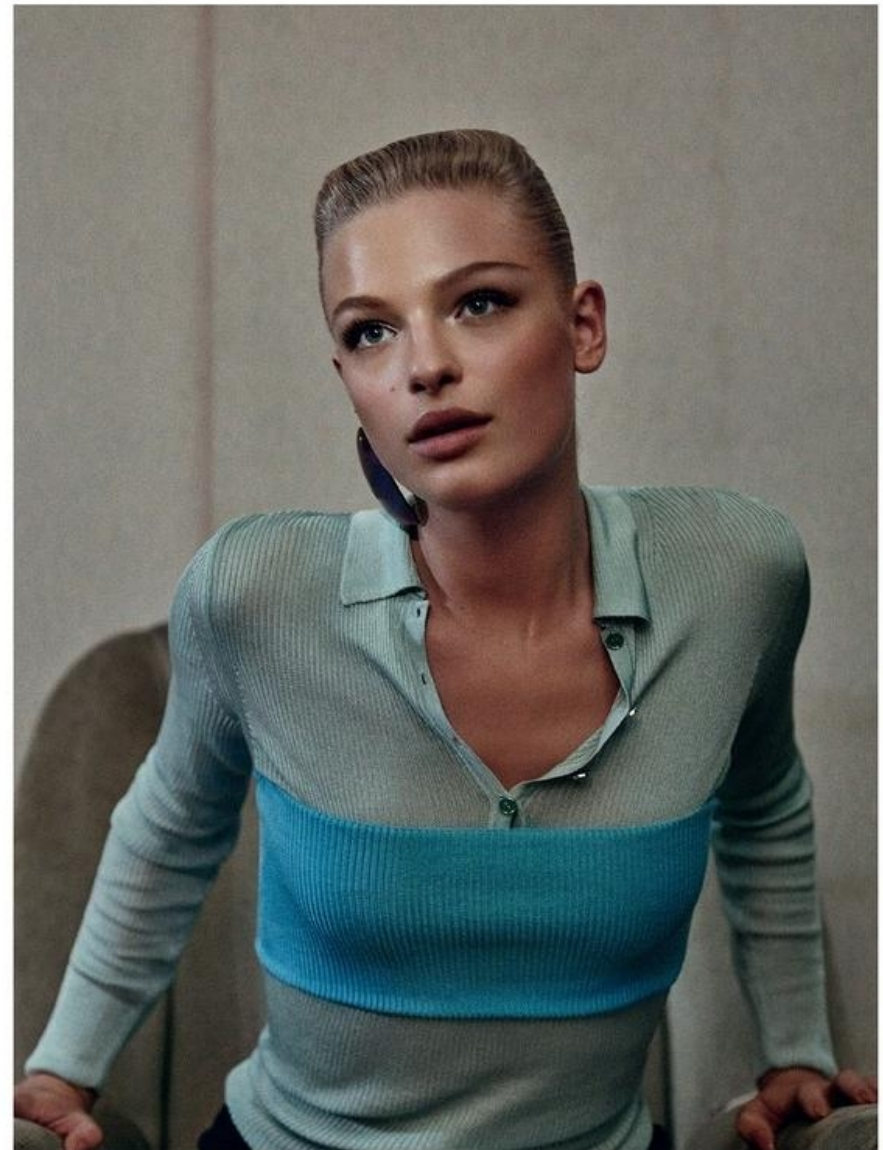
FREDERIKKE SOFIE

HEIGHT 5'10 1/2 HAIR BLONDE EYES BLUE BUST 31 WAIST 24 HIPS 34 1/2 SHOE 10



FREDERIKKE SOFIE

HEIGHT 5'10 1/2 HAIR *BLONDE* EYES *BLUE* BUST 31 WAIST 24 HIPS 34 1/2 SHOE 10



FREDERIKKE SOFIE

HEIGHT 5'10 1/2 HAIR BLONDE EYES BLUE BUST 31 WAIST 24 HIPS 34 1/2 SHOE 10



In queste pagine, Camicia di misto lana con dettagli a zip e gonna di panno a pannelli asimmetrici, Sportmax; gonna di gabardine nylon con dettaglio quilted in contrasto e cintura di cuoio, Prada.



FREDERIKKE SOFIE

HEIGHT 5'10 1/2 HAIR *BLONDE* EYES *BLUE* BUST 31 WAIST 24 HIPS 34 1/2 SHOE 10



FREDERIKKE SOFIE

HEIGHT 5'10 1/2 HAIR BLONDE EYES BLUE BUST 31 WAIST 24 HIPS 34 1/2 SHOE 10



FREDERIKKE SOFIE

HEIGHT 5'10 1/2 HAIR BLONDE EYES BLUE BUST 31 WAIST 24 HIPS 34 1/2 SHOE 10



31
FR

BOURNE N° 21 05 2014
BOURNE N° 21 05 2014
BOURNE N° 21 05 2014
BOURNE N° 21 05 2014

double

“Eh mec !, c’est Paris.
Tu m’entends? P-A-R-I-S, Paris. Respire le bon air...”

TAXI GIRL

WITH Mert Alas & Marcus Piggott
Paul Verhoeven - Walter Pfeiffer

MADE IN PARIS. EST



FREDERIKKE SOFIE

HEIGHT 5'10 1/2 HAIR *BLONDE* EYES *BLUE* BUST 31 WAIST 24 HIPS 34 1/2 SHOE 10