

HEIGHT 5'10 1/2
HAIR *BROWN*
EYES *BROWN*
BUST 29
WAIST 24
HIPS 34
SHOE 8

dna
MODEL MANAGEMENT LLC

555 WEST 25TH ST, 6TH FL NEW YORK, NY 10001 TEL. 212.226.0080 FAX 212.226.7711 dnamodels.com

FREJA BEHA ERICHSEN





Page de gauche, manteau en toile de coton, **CHRISTIAN DIOR**. Ceinture en cuir exotique, **SAINT LAURENT PAR ANTHONY VACCARELLO**. Sandales en cuir, **KENZO**.

Ci-contre, robe en soie mélangée et collier de perles, **CHANEL**. Escarpins en cuir, **CHRISTIAN LOUBOUTIN**.



FREJA BEHA ERICHSEN

HEIGHT 5'10 1/2 HAIR BROWN EYES BROWN BUST 29 WAIST 24 HIPS 34 SHOE 8



Page de gauche, top en satin de soie,
GIVENCHY. Cycliste, **SAINT LAURENT**
PAR ANTHONY VACCARELLO.
Ci-contre, robe en coton, **SPORTMAX**.
Mules matelassées en satin de soie,
BALENCIAGA.



Page de gauche, robe en satin de soie
brodé de perles et de cristaux,
MIU MIU. Mules matelassées en satin
de soie, **BALENCIAGA**.
Ci-contre, débardeur en cristaux
Swarovski, **LUDOVIC DE SAINT SERNIN**.
Pantalon en laine, **PRADA**.

FREJA BEHA ERICHSEN

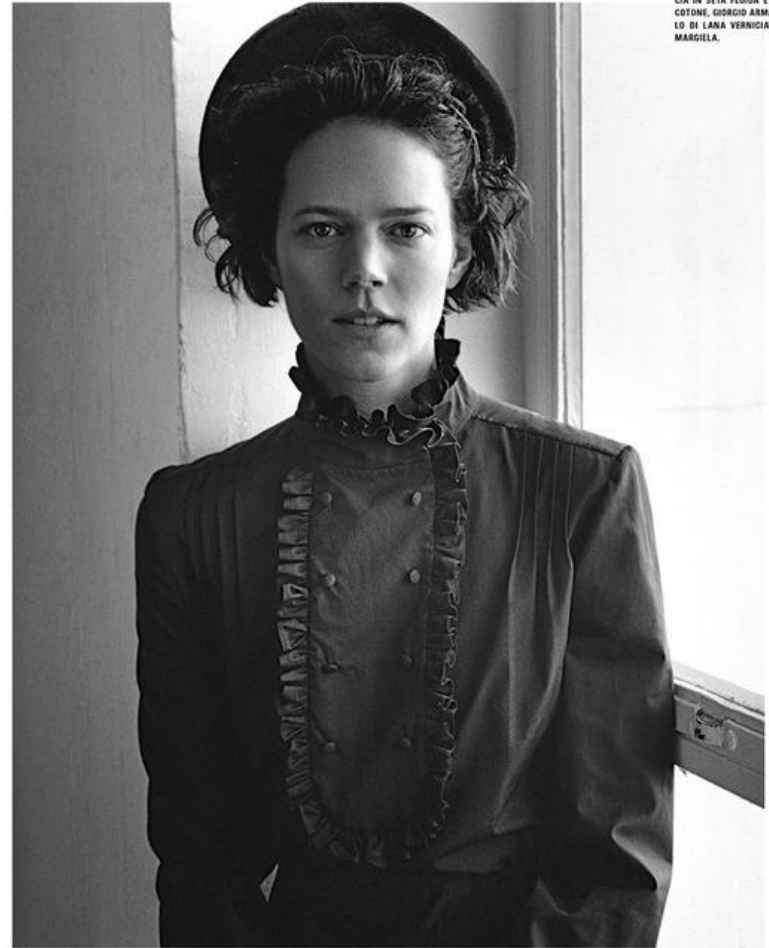
HEIGHT 5'10 1/2 HAIR BROWN EYES BROWN BUST 29 WAIST 24 HIPS 34 SHOE 8



MAGLIONE DI SHETLAND, GONNA DI
GABARDINE RE-NYLON, SLINGBACKS
IN VITELLO SPAZZOLATO E NYLON E
BORSA A MANO IN VITELLO SPAZZO-
LATO. NELLA PAGINA ACCANTO:
CAPPA, CAMICIA E PANTALONI DI
TAFFETA CHINE.

FREJA BEHA ERICHSEN

HEIGHT 5'10 1/2 HAIR BROWN EYES BROWN BUST 29 WAIST 24 HIPS 34 SHOE 8



ABITO DI POPELINE COMPACT, FRADA; CAPPELLO DI LANA, MAISON MARGIELA.

NELLA PAGINA ACCANTO: GIACCA DOPPIOPETTO CON FLEURS A LANCIA IN SETA FLUIDA E CAMICIA DI COTONE, GIORGIO ARMANI; CAPPELLO DI LANA VERNICIATA, MAISON MARGIELA.

FREJA BEHA ERICHSEN

HEIGHT 5'10 1/2 HAIR BROWN EYES BROWN BUST 29 WAIST 24 HIPS 34 SHOE 8



COMERACK QUEEN,
THE PRETTY PEASANT
BLAUNSE IS BACK ON THE
MAP THANKS TO CELINE.
THIS PAGE: LINEN BLOUSE,
41,200. FLARED JEANS,
4550. BOTH CELINE BY
HEDI SLIMANE. HEADBAND,
FROM 265. LELE SADOUGHI



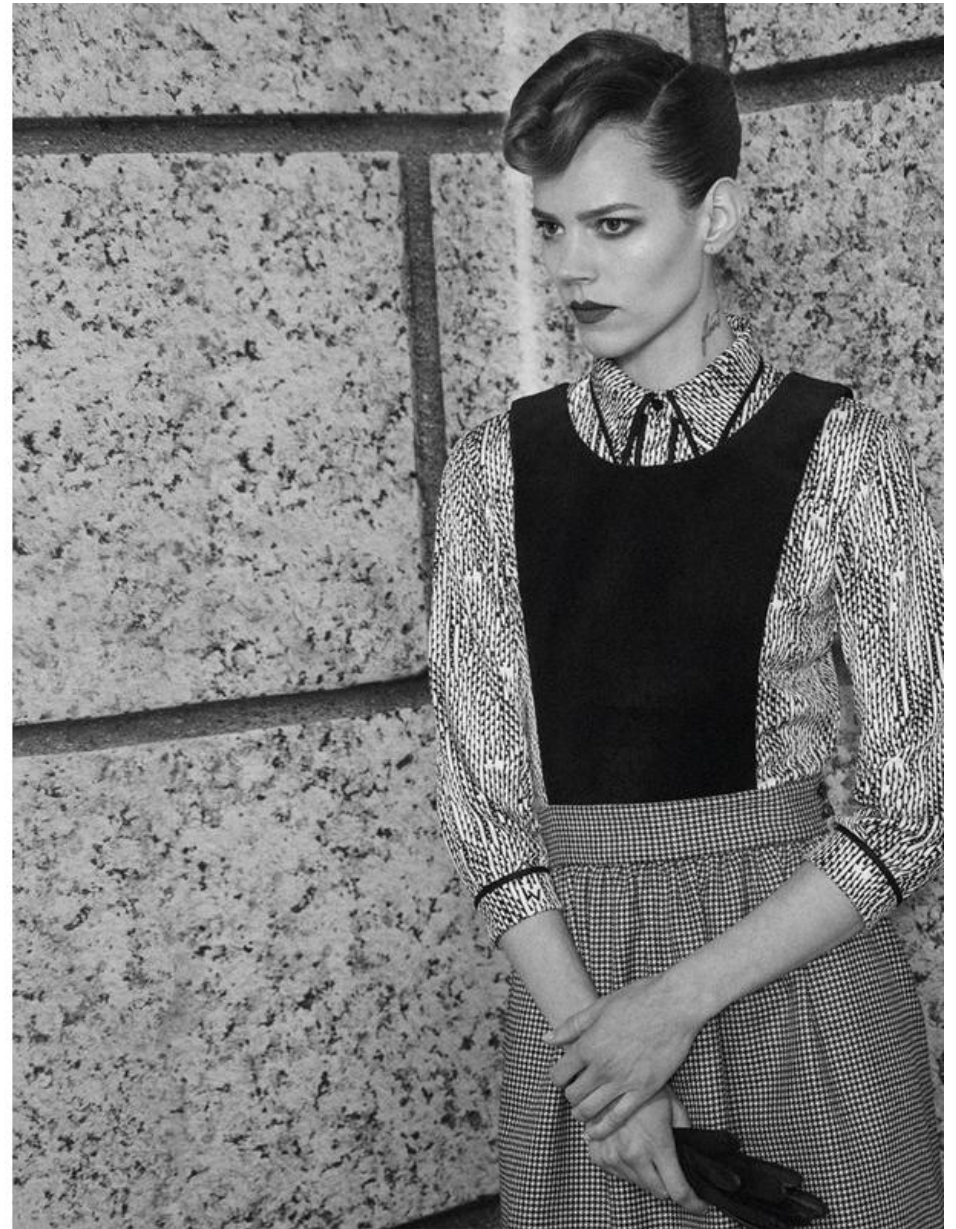
FREJA BEHA ERICHSEN

HEIGHT 5'10 1/2 HAIR BROWN EYES BROWN BUST 29 WAIST 24 HIPS 34 SHOE 8

MASTERMIND DE



082



FREJA BEHA ERICHSEN

HEIGHT 5'10 1/2 HAIR BROWN EYES BROWN BUST 29 WAIST 24 HIPS 34 SHOE 8



CORY ALEXANDER ET FREJA BEHA ERICHSEN

*À gauche, débardeur en velours, Balenciaga. Lunettes, Ray-Ban.
 À droite, veste officier et pantalon en coton, Ralph Lauren Collection.
 Casquette vintage, Early Halloween NYC. PAGE DE GAUCHE, longue
 robe en organza plissé soleil, Valentino. Boucles d'oreilles, Shourouk.*



FREJA BEHA ERICHSEN
*Body drapé avec épaule en gorgeotte de dentelle
 et volants en soie et soie, Saint Laurent par
 Anthony Vaccarello. Lunettes, Fendi.
 Boucle, Marion Godard. Manteau en Boom
 Box Love Daddy, Judith Leiser Couture.
 PAGE DE GAUCHE, à gauche, veste et pantalon
 en toile entièrement brodée de franges perlées, et
 lunettes masqué ornées de cristaux, Gucci.
 Débardeur en coton et mix côtelé, American
 Vintage. À droite, veste en soie brodée de sequins,
 Gucci. Chemise et pantalon, Alled Martinez.*

FREJA BEHA ERICHSEN

HEIGHT 5'10 1/2 HAIR BROWN EYES BROWN BUST 29 WAIST 24 HIPS 34 SHOE 8



FREJA

BY LUIGI AND IANGO

FREJA BEHA ERICHSEN

HEIGHT 5'10 1/2 HAIR *BROWN* EYES *BROWN* BUST 29 WAIST 24 HIPS 34 SHOE 8



FREJA BEHA ERICHSEN

HEIGHT 5'10 1/2 HAIR *BROWN* EYES *BROWN* BUST 29 WAIST 24 HIPS 34 SHOE 8



01 THE FIX



Tailored oversized wool jacket and nylon vintage dress (under) by Junya Watanabe, pleated polyester pants by Pleats Please Issey Miyake, and tabi flat leather boots by Maison Margiela F/W 18.

093

FREJA BEHA ERICHSEN

HEIGHT 5'10 1/2 HAIR BROWN EYES BROWN BUST 29 WAIST 24 HIPS 34 SHOE 8



FREJA BEHA ERICHSEN

HEIGHT 5'10 1/2 HAIR BROWN EYES BROWN BUST 29 WAIST 24 HIPS 34 SHOE 8



"THERE IS A LOT OF PRESSURE WE PUT ON OURSELVES," SAYS MAURKATE. "I FEEL LIKE WE'RE REALLY LUCKY THAT WE HAVE A GREAT PARTNERSHIP BECAUSE I CAN IMAGINE IT CAN BE SO LONELY." OPPOSITE: WOOLZ SILK BELTED JACKET, \$3,380. ORGANZA SHIRTDRESS, \$1,940. THIS PAGE: STRETCH WOOL TROUSERS, \$1,860. SILK-ORGANZA TOP, \$800. ALL THE ROW: FROM A SELECTION AT DOVER STREET MARKET. MATCHESFASHION.COM, NET-A-PORTER.COM AND SASS 5TH AVENUE. FOR STOCKISTS, ALL PAGES, SEE VOGUE INFORMATION. HAIR: ORLANDO PITA. MAKE-UP: FRANGELLE. DAVE NILES. TUBO. TSUCHIHASHI. DIGITAL ARTWORK: GLOSS. MODELS: FREJA BEHA ERICHSEN, BINK WATSON. THE OLSENS' HAIR AND MAKE-UP: MARK TOWNSEND AND ANA MARIE RIZZIERI.

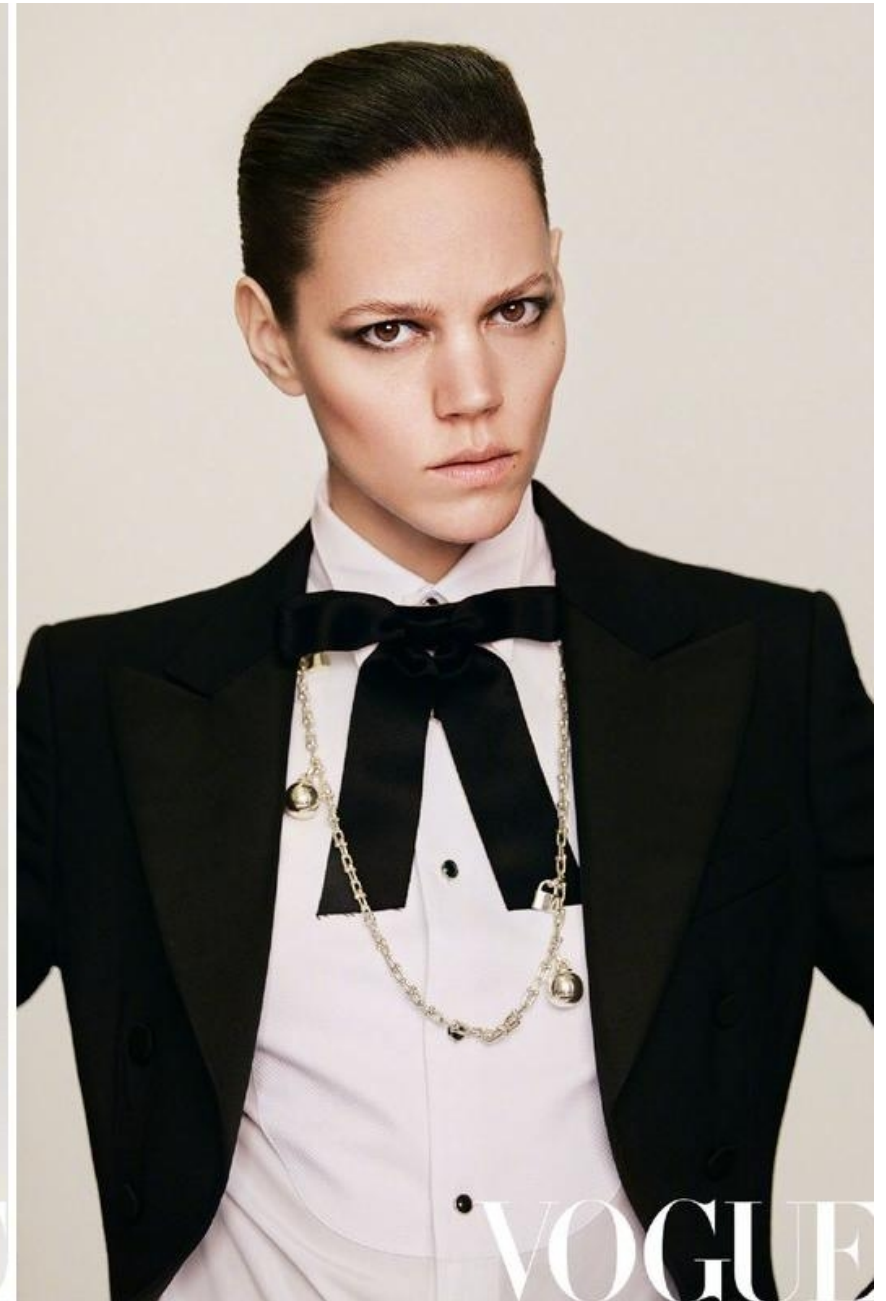
FREJA BEHA ERICHSEN

HEIGHT 5'10 1/2 HAIR BROWN EYES BROWN BUST 29 WAIST 24 HIPS 34 SHOE 8



FREJA BEHA ERICHSEN

HEIGHT 5'10 1/2 HAIR BROWN EYES BROWN BUST 29 WAIST 24 HIPS 34 SHOE 8



FREJA BEHA ERICHSEN

HEIGHT 5'10 1/2 HAIR *BROWN* EYES *BROWN* BUST 29 WAIST 24 HIPS 34 SHOE 8



FREJA BEHA ERICHSEN

HEIGHT 5'10 1/2 HAIR *BROWN* EYES *BROWN* BUST 29 WAIST 24 HIPS 34 SHOE 8



FREJA BEHA ERICHSEN

HEIGHT 5'10 1/2 HAIR BROWN EYES BROWN BUST 29 WAIST 24 HIPS 34 SHOE 8



FREJA BEHA ERICHSEN

HEIGHT 5'10 1/2 HAIR BROWN EYES BROWN BUST 29 WAIST 24 HIPS 34 SHOE 8



FREJA BEHA ERICHSEN

HEIGHT 5'10 1/2 HAIR BROWN EYES BROWN BUST 29 WAIST 24 HIPS 34 SHOE 8



FREJA BEHA ERICHSEN

HEIGHT 5'10 1/2 HAIR BROWN EYES BROWN BUST 29 WAIST 24 HIPS 34 SHOE 8



FREJA BEHA ERICHSEN

HEIGHT 5'10 1/2 HAIR BROWN EYES BROWN BUST 29 WAIST 24 HIPS 34 SHOE 8