

HEIGHT *5'10*
HAIR *BLONDE*
EYES *GREEN*
BUST *31*
WAIST *24*
HIPS *34*
SHOE *8*

dna
MODEL MANAGEMENT LLC

555 WEST 25TH ST, 6TH FL NEW YORK, NY 10001 TEL. 212.226.0080 FAX 212.226.7711 dnamodels.com



Numéro

189

MODE
ÉTINCELANTE
Par Solve
Sundsbo

DONATELLA
VERSACE
Au firmament

PIERRE NINEY
Acteur magistral

WILLIAM
FORSYTHE
Chorégraphe star

Stellaire

Decembre 2017-janvier 2018

INE NEEFS



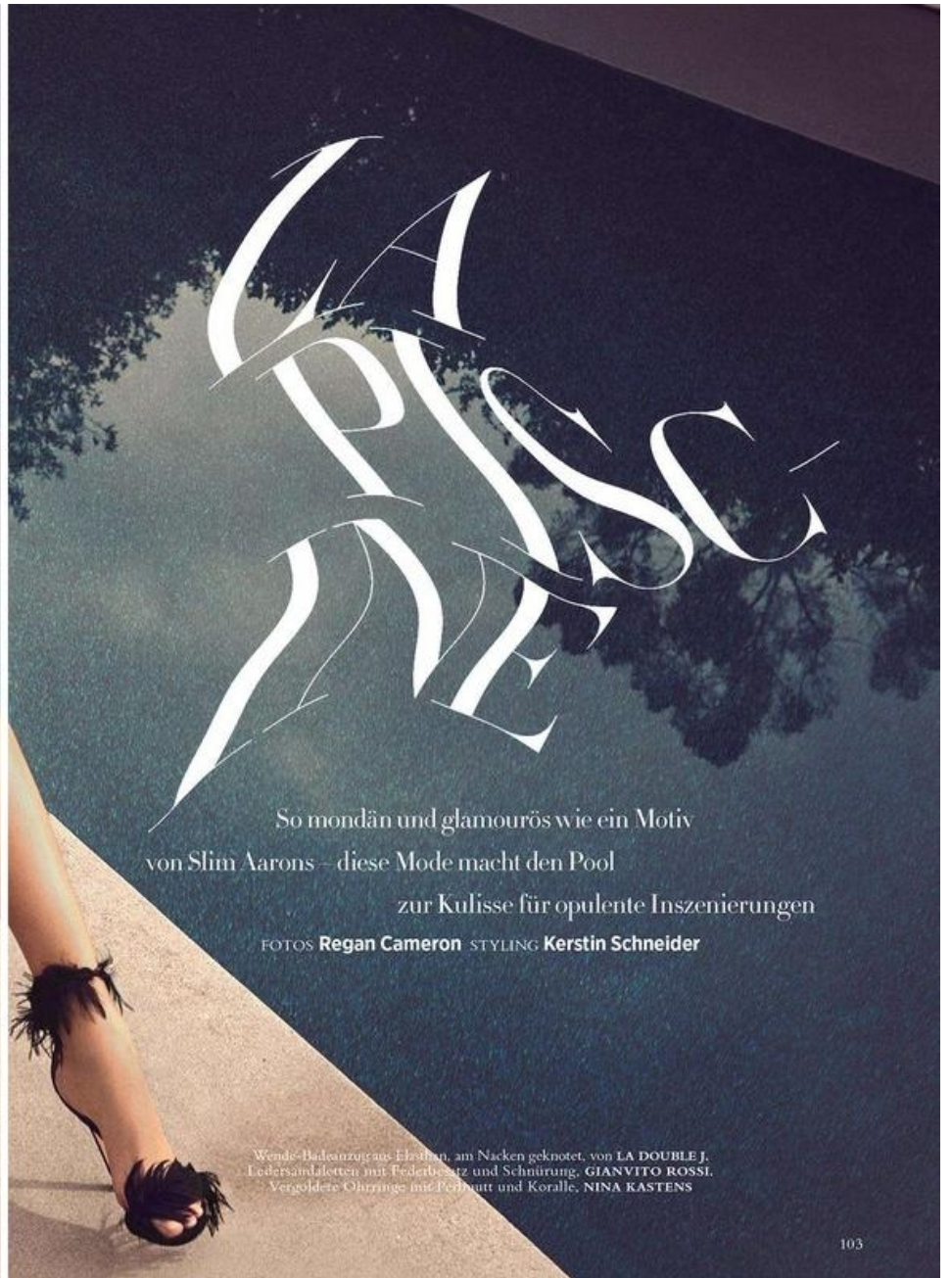
Schlaghose aus Leinen mit Paisleymuster zu passendem Oberteil mit Ballonärmeln und Cut-outs, beides mit Perlenbesatz, von ZIMMERMANN. Plateausandalen, SAINT LAURENT BY ANTHONY VACCARELLO. Vergoldete Creolen mit Muschelanhänger, MARJANA VON BERLEPSCH



Bodenlanges Kleid aus fließendem Seidensatin mit tiefem Rückenausschnitt, von GALVAN LONDON. XL-Fächer mit Federn, GUCCI. Große Herz-Ohrstecker mit Kristallen, BALENCIAGA

INE NEEDS

HEIGHT 5'10 HAIR *BLONDE* EYES *GREEN* BUST 31 WAIST 24 HIPS 34 SHOE 8



So mondän und glamourös wie ein Motiv
von Slim Aarons – diese Mode macht den Pool
zur Kulisse für opulente Inszenierungen

FOTOS **Regan Cameron** STYLING **Kerstin Schneider**

Wende-Badeanzug aus Elasthan, am Nacken geknotet, von **LA DOUBLE J**.
Ledersandlotten mit Federbesatz und Schnürung, **GIANVITO ROSSI**.
Vergoldete Ohrringe mit Perlmutt und Koralle, **NINA KASTENS**

INE NEEFS

HEIGHT 5'10 HAIR *BLONDE* EYES *GREEN* BUST 31 WAIST 24 HIPS 34 SHOE 8



INE NEEFS

HEIGHT 5'10 HAIR *BLONDE* EYES *GREEN* BUST 31 WAIST 24 HIPS 34 SHOE 8



INE NEEFS

HEIGHT 5'10 HAIR *BLONDE* EYES *GREEN* BUST 31 WAIST 24 HIPS 34 SHOE 8



INE NEEDS

HEIGHT 5'10 HAIR *BLONDE* EYES *GREEN* BUST 31 WAIST 24 HIPS 34 SHOE 8

Beauty

EDITOR: SARAH BROWN

BLUE STREAK
INE NEEDS IN A
CÉLINE DRESS.
TOP AND
EARRING. BELOW
LEFT, MAKE EYE
SHADOWS IN
SIBERIAN BLUE
AND CELESTE.
HAIR, JULIEN
D'YS. MAKEUP,
DIANE KENDAL.
PHOTOGRAPHED
BY PATRICK
DEMARCHÉLIER.
FASHION EDITOR,
PHYLLIS POSNICK.



Graphic Art

The biggest trend for fall? Individuality. The season's bold new takes on eye makeup—from punk to painterly—offer something for every personality.

Once it was easy. There was a single trend or, OK, maybe two, on the runways, and a very limited makeup palette to accompany these unwavering fashion imperatives. You went out and bought the right outfits, slapped the right stuff on your face, and that was that—you were in style! But gradually, and then not so gradually, it all changed: A thousand flowers bloomed on catwalks. And as for your visage, well, depending on whether you were clad in flowing bohemian Chloé or Alexander Wang safety pins, you might dramatize yourself one day with a mere whisper of pale fire **BEAUTY>114**

VOGUE.COM

LAVENDER BLUSH
Forget spring fever. The flush of the moment has a distinct chill to it. Blush with cool pink and lavender undertones gives cheeks a sharper, more sculpted look. Apply it just along the cheekbones to softly define and contour.

On the Neefs: Polyester dress by Emilio Pucci. Crown by Heart of Gold. Makeup colors: Pigment in Feat and Powder Blush in Full of Joy by M.A.C. Details, see Shopping Guide.

Eye shadows: JOHN MANNING. DETAILS: SEE IN THIS ISSUE.



189

INE NEEDS

HEIGHT 5'10 HAIR BLONDE EYES GREEN BUST 31 WAIST 24 HIPS 34 SHOE 8



TERRA-COTTA EYES
As an eye shadow, terracotta has the warmth of a neutral with some built-in edge. Kallistos swept powder over the lid and around the eye, leaving the bottom lashes bare for a "sexy, natural" feel. He kept everything else naked as well. Just use a little tinted moisturizer to cancel out ruddiness (a must when wearing orange hues).

Microfiber bodysuit by I. D. Sarrieri. Silk tulle skirt by The Row. Makeup colors: Eye Enhancers eye shadow in Dazzling Metallics and Jumbo Gloss Balm in Ballet Twist by CoverGirl. Details, see Shopping Guide.



Model Ine Neefs carries a Fendi snakeskin bag, \$3,150; Fendi, NYC.

Simone Rocha dress, \$3,900; select Nordstrom stores.

Dior Fine Jewelry earrings and ring.

INE NEEFS

HEIGHT 5'10 HAIR *BLONDE* EYES *GREEN* BUST 31 WAIST 24 HIPS 34 SHOE 8



245



253

INE NEEFS

HEIGHT 5'10 HAIR *BLONDE* EYES *GREEN* BUST 31 WAIST 24 HIPS 34 SHOE 8



*Ine wears dress from Yves Saint Laurent Archives, Olivier Châtenet collection, vintage necklaces from Galerie Argiles, choker by Aurélie Bidermann and rings by Alina Alamaréan at IBU Gallery
Opposite: Ine wears top and skirt by Louis Vuitton, brooch by the Vase de Delft, bag by Alina Alamaréan at IBU Gallery, scarf on the bag by Chloé Archives, Olivier Châtenet collection and vintage rings by Alina Alamaréan at IBU Gallery*



Ine wears top and skirt by JW Anderson, shirt and under-skirt from Chloé Archives, scarf worn as a belt from Chloé Archives, Olivier Châtenet collection, vintage belt by Galerie Argiles, vintage socks from Olivier Châtenet collection and rings by Alina Alamaréan at IBU Gallery

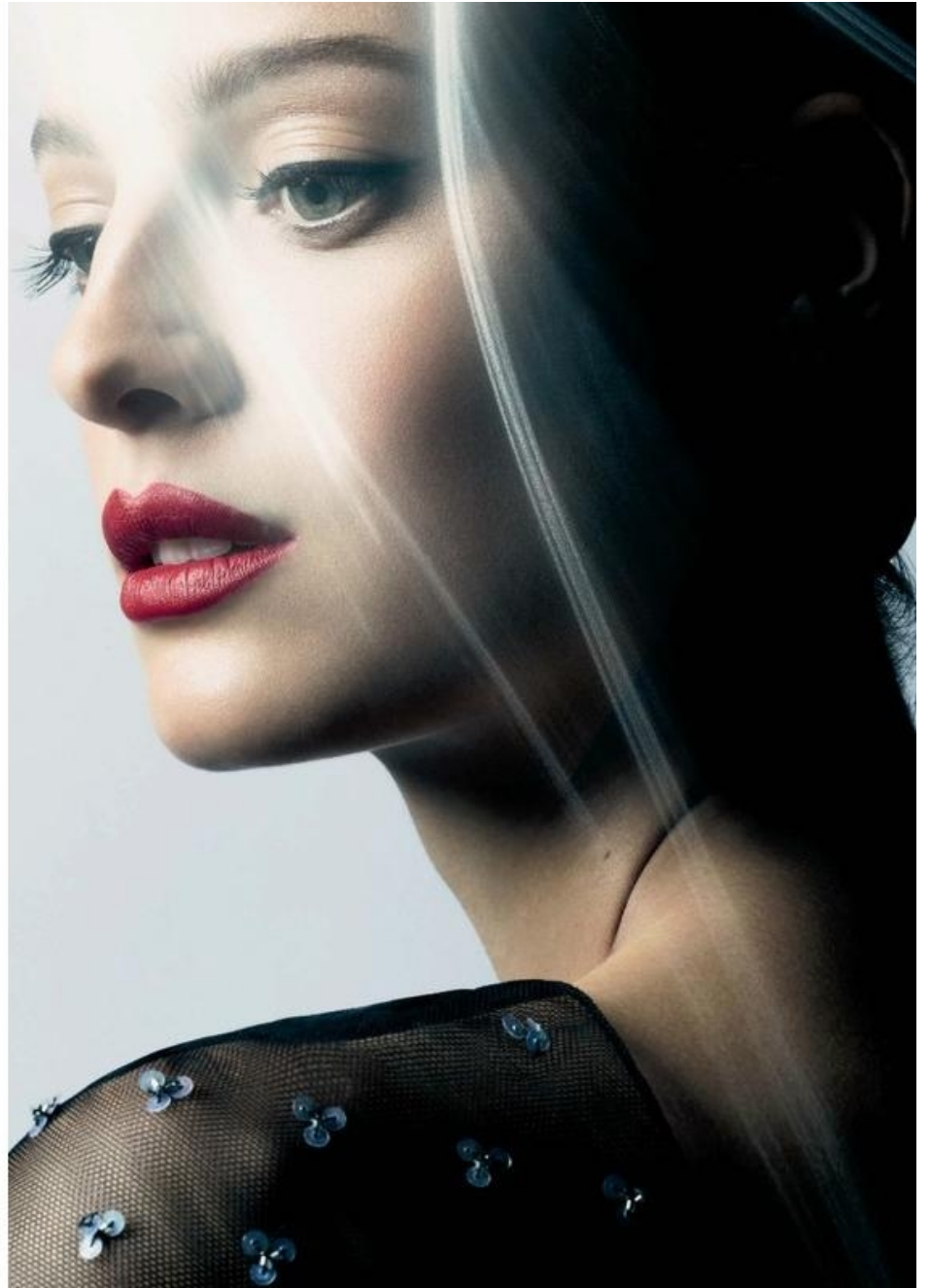
INE NEEFS

HEIGHT 5'10 HAIR *BLONDE* EYES *GREEN* BUST 31 WAIST 24 HIPS 34 SHOE 8



INE NEEFS

HEIGHT 5'10 HAIR BLONDE EYES GREEN BUST 31 WAIST 24 HIPS 34 SHOE 8



INE NEEFS

HEIGHT 5'10 HAIR *BLONDE* EYES *GREEN* BUST 31 WAIST 24 HIPS 34 SHOE 8



INE NEEFS

HEIGHT 5'10 HAIR *BLONDE* EYES *GREEN* BUST 31 WAIST 24 HIPS 34 SHOE 8



NICOLA BONVISEI

Opposite: Christian Dior by Maria Grazia Chiari haute couture spring/summer '17 "Thède" satin topcoat and inverted pleat pants. Gerbe red fishnet tights. Wolford black fishnet tights. Christian Dior shoes. **This page:** Christian Dior by Raf Simons haute couture autumn/winter '12/'13 cashmere Bar coat. Christian Dior belt and shoes. Gerbe grey fishnet tights. Wolford black fishnet tights.



INE NEEDS

HEIGHT 5'10 HAIR *BLONDE* EYES *GREEN* BUST 31 WAIST 24 HIPS 34 SHOE 8



THE MODEL: INE NEEFS PHOTOGRAPHED BY KARIM
 SAELE INE WEARS A BLACK WOOL JACKET VINTAGE
 COMME DES GARÇONS FROM ANOUSCHKA PARIS
 WHITE STUCCO TOP JEAN COLONNA ARCHIVE
 BLACK WOOL TROUSERS RIGORDI ARMANI
 SNEAKERS VINTAGE ADIDAS FROM ANOUSCHKA
 PARIS © 2014 MADDISON STUBBSINGTON
 PHOTOGRAPHED BY VENETIA SCOTT MARKSON
 WEARS A PATCHWORK LEATHER COAT WITH MERINO
 COLLAR ADUIS VUITTON WHITE LEATHER SHOES
 VINTAGE POLICE & GABRIANA FROM ALBUCHIT
 FASHION LIBRARY

THE MODEL: INE NEEFS PHOTOGRAPHED BY
 KARIM SAELE INE WEARS A BLACK ALPACA
 COAT CELINE WHITE TANK TOP JEAN COLONNA
 BLACK WOOL TROUSERS SONIA RIKIEL
 LEATHER BELT QUEEN OF HEARTS SNEAKERS
 VINTAGE ADIDAS FROM ANOUSCHKA PARIS
 © 2014 MADDISON STUBBSINGTON
 PHOTOGRAPHED BY VENETIA SCOTT MARKSON
 WEARS A PATCHWORK LEATHER COAT WITH MERINO
 COLLAR ADUIS VUITTON WHITE LEATHER SHOES
 VINTAGE POLICE & GABRIANA FROM ALBUCHIT
 FASHION LIBRARY

INE NEEFS

HEIGHT 5'10 HAIR *BLONDE* EYES *GREEN* BUST 31 WAIST 24 HIPS 34 SHOE 8



INE NEEDS

HEIGHT 5'10 HAIR *BLONDE* EYES *GREEN* BUST 31 WAIST 24 HIPS 34 SHOE 8



Robe en tricot de laine à
jupe en velours, ceinture
nouée de cravate en cuir, et
bottines en toile Monogram
et cuir, LOUIS VUITTON.
Page de gauche: pantalon
zippé en laine, ceinture
nouée de cravate, jupe en
cuir, et boucle d'oreille
Essential V8 en métal,
LOUIS VUITTON.

283



INE NEEDS

HEIGHT 5'10 HAIR *BLONDE* EYES *GREEN* BUST 31 WAIST 24 HIPS 34 SHOE 8



Pull tricoté main en maille mohair, MICHAEL KORS. Page de gauche, pull à plastron boutonné en maille de laine, HOOD BY AIR.
Pantalon oversized en toile technique, CALVIN KLEIN COLLECTION. Sandales en cuir, PACO RABANNE. Maquillage Giorgio Armani
avec le fond de teint Maestro Makeup Fusion ex. L'Eye & Brow Maestro Jet Black et, sur les lèvres, le Rouge d'Armani Sheer 514.



INE NEEDS

HEIGHT 5'10 HAIR *BLONDE* EYES *GREEN* BUST 31 WAIST 24 HIPS 34 SHOE 8



This page: INE NEEFS PHOTOGRAPHED BY KARIM SADDI. INE WEARS A BLACK WOOL JACKET, VINTAGE COMME DES GARÇONS FROM ANGI SCITTA, PARIS. Opposite page: FERN BAIN SMITH PHOTOGRAPHED BY JAMEL HAWKSWORTH. STYLING BY ELONIE DAVY FOR SOUL. HAIR BY DAMIEN BOSSIGNO. MAKEUP BY ALICE GILLES. FERN WEARS A BLACK WOOL 'SAMOUEAL' TOP WITH PLASTON AND WHITE COTTON TRIMMINGS, PICO RABANNE.



INE NEEFS

HEIGHT 5'10 HAIR *BLONDE* EYES *GREEN* BUST 31 WAIST 24 HIPS 34 SHOE 8



VOGUE

NEDERLAND

BELGISCHE
EDITIE

Ine door
Jennifer Massaux

INE NEEFS

HEIGHT 5'10 HAIR *BLONDE* EYES *GREEN* BUST 31 WAIST 24 HIPS 34 SHOE 8