

HEIGHT *5'11*  
HAIR *BLONDE*  
EYES *BLUE*  
BUST *32*  
WAIST *23*  
HIPS *34*  
SHOE *10 1/2*

**dna**  
MODEL MANAGEMENT LLC

555 WEST 25TH ST, 6TH FL NEW YORK, NY 10001 TEL. 212.226.0080 FAX 212.226.7711 dnamodels.com

---

## THE TRAVEL ALMANAC

---



Julia Nobis

DE/AT 20€ / UK 17£



JULIA NOBIS



Dress - CHRISTOPHER AARON



Full Look - SAINT LAURENT

# JULIA NOBIS

HEIGHT 5'11 HAIR *BLONDE* EYES *BLUE* BUST 32 WAIST 23 HIPS 34 SHOE 10 1/2



*Julia wears hat, coat, dress and belt by Pierre Cardin  
and shoes by Bottega Veneta*

79



# JULIA NOBIS

HEIGHT 5'11 HAIR BLONDE EYES BLUE BUST 32 WAIST 23 HIPS 34 SHOE 10 1/2





*Julia wears shorts, T-shirt and jacket by Rick Owens, catwalk by Yohji Yamamoto.  
Opposite: Vintage pants by Comme des Garçons from 20Age Archive, cape by Maison Margiela, boots by Louis Vuitton.  
Hair by Damien Boisvinat. Makeup by Hiroaki Ueda. Manicure by Elsa Deslandes. Photography assistance by  
Thomas Clarkson, Kevin Théaud and Christian Mespands. Styling assistance by Xenia May Sattel. Tailoring by Laura Giuffrè.  
Hair assistance by Kyoto Kibita. Makeup assistance by Miki. Post-production: Grain. Model: Julia Nobis*



# JULIA NOBIS

HEIGHT 5'11 HAIR BLONDE EYES BLUE BUST 32 WAIST 23 HIPS 34 SHOE 10 1/2

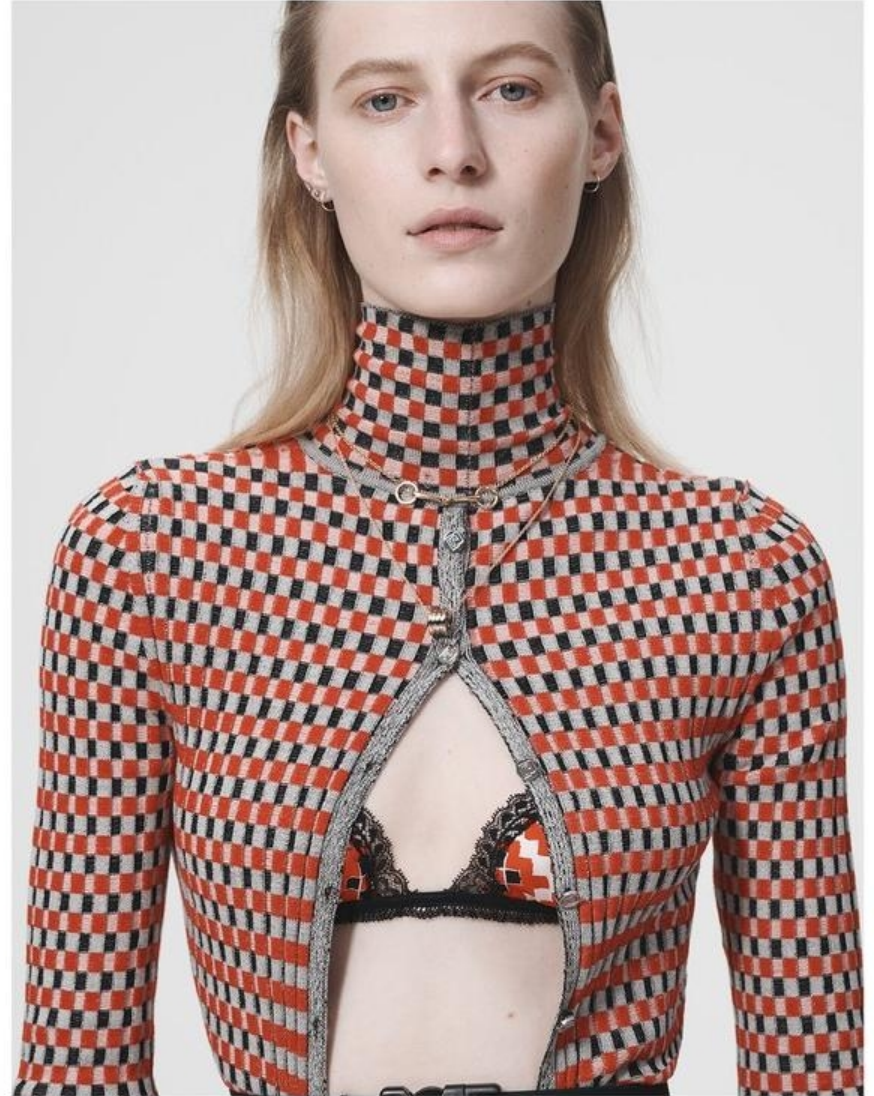


11 WANTED!



347

11 WANTED!



337

# JULIA NOBIS

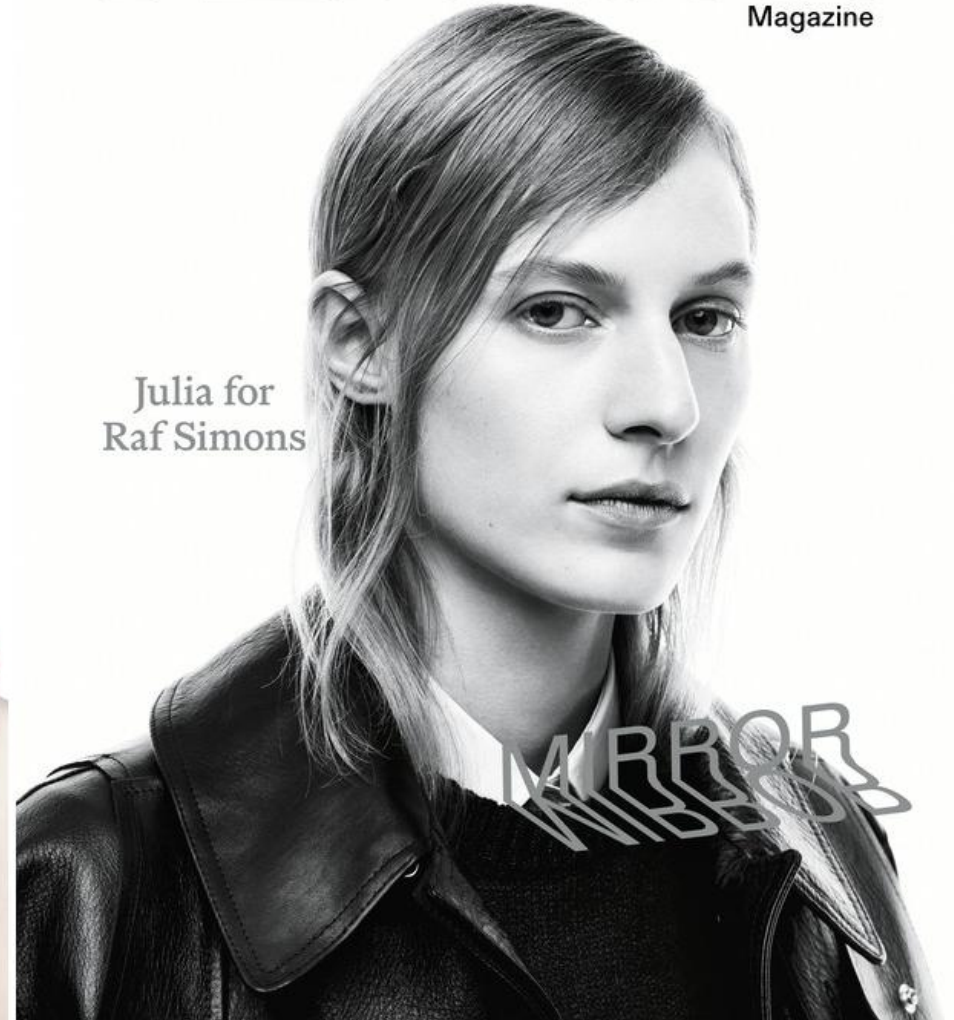
HEIGHT 5'11 HAIR *BLONDE* EYES *BLUE* BUST 32 WAIST 23 HIPS 34 SHOE 10 1/2

# AnOther

Magazine



Julia for  
Raf Simons



## JULIA NOBIS

HEIGHT 5'11 HAIR *BLONDE* EYES *BLUE* BUST 32 WAIST 23 HIPS 34 SHOE 10 1/2





# JULIA NOBIS

HEIGHT 5'11 HAIR *BLONDE* EYES *BLUE* BUST 32 WAIST 23 HIPS 34 SHOE 10 1/2





Coat GUCCI. Top and harness vintage HELMUT LANG courtesy of Artifact New York. Briefs vintage ANNI DEMEULEMEESTER courtesy of Albright Fashion Library. Tights stylist's studio.



# JULIA NOBIS

HEIGHT 5'11 HAIR *BLONDE* EYES *BLUE* BUST 32 WAIST 23 HIPS 34 SHOE 10 1/2



# JULIA NOBIS

HEIGHT 5'11 HAIR *BLONDE* EYES *BLUE* BUST 32 WAIST 23 HIPS 34 SHOE 10 1/2



# JULIA NOBIS

HEIGHT 5'11 HAIR *BLONDE* EYES *BLUE* BUST 32 WAIST 23 HIPS 34 SHOE 10 1/2





# JULIA NOBIS

HEIGHT 5'11 HAIR *BLONDE* EYES *BLUE* BUST 32 WAIST 23 HIPS 34 SHOE 10 1/2



# JULIA NOBIS

HEIGHT 5'11 HAIR *BLONDE* EYES *BLUE* BUST 32 WAIST 23 HIPS 34 SHOE 10 1/2





# JULIA NOBIS

HEIGHT 5'11 HAIR *BLONDE* EYES *BLUE* BUST 32 WAIST 23 HIPS 34 SHOE 10 1/2





# JULIA NOBIS

HEIGHT 5'11 HAIR *BLONDE* EYES *BLUE* BUST 32 WAIST 23 HIPS 34 SHOE 10 1/2



# JULIA NOBIS

HEIGHT 5'11 HAIR *BLONDE* EYES *BLUE* BUST 32 WAIST 23 HIPS 34 SHOE 10 1/2





# JULIA NOBIS

HEIGHT 5'11 HAIR *BLONDE* EYES *BLUE* BUST 32 WAIST 23 HIPS 34 SHOE 10 1/2





MARRY CHANEL'S MUDDY-BROWN WEATHERPROOFING WITH BLACK LEATHER HEADGEAR FOR A SENSUAL AFFAIR. THIS PAGE: WADED-COTTON COAT \$6,040, CHANEL, WADED-COTTON CAPE, WORN ON SHOULDER, \$2,120, MIU MIU, COTTON SHIRT, \$640, PRADA, VINTAGE FLYING HELMET, FROM A SELECTION, THE VINTAGE SHOWROOM. SUBVERT FASHION'S OUTDOORSY TURN: PROENZA SCHOULER'S RUBBER-HAPPY TRENCH IS PRACTICAL AND PROVOCATIVE. OPPOSITE: TRENCH COAT, FROM A SELECTION, PROENZA SCHOULER, MEN'S COTTON SHIRT, £500, THE ROW, TIE, FROM A SELECTION, PRADA, WADERS, AS BEFORE, VINTAGE HOOD, FROM A SELECTION, THE VINTAGE SHOWROOM. LEATHER GLOVES, £462, RICK OWENS



# JULIA NOBIS

HEIGHT 5'11 HAIR *BLONDE* EYES *BLUE* BUST 32 WAIST 23 HIPS 34 SHOE 10 1/2



*photographed by* STEVEN MEISEL  
*fashion editor* JOE McKENNA  
*hair* GUIDO PALAU *makeup* PAT McGRATH

# JULIA NOBIS

HEIGHT 5'11 HAIR *BLONDE* EYES *BLUE* BUST 32 WAIST 23 HIPS 34 SHOE 10 1/2





*Abito di cotone tagliato al laser AZZEDINE ALI.Ali. Costume 2014. Abito in seta con lacerazioni AZZEDINE ALI.Ali. Nella pagina accanto: Modelleria Sophia Linn per ROMANTIC COÛTURE.*



*Julia Nobis in DNA Model Management: abito di seta e cotone tagliato, AZZEDINE ALI.Ali. Costume 2002. Nella pagina accanto: look di Marr a Supreme Management: abito di seta e cotone con bottoni in metallo e bottoni a zappa, CHANEL HAUTE COUTURE. In apertura, da sinistra, Capri di lana e seta di Zouli, look puntiforme di lana e seta impunturata, top di cotone e rafia, "Rosaire", VALENTINO HAUTE COUTURE. In pagina accanto: look di lana e seta di Zouli, look puntiforme di lana e seta impunturata, top di cotone e rafia, "Rosaire", VALENTINO HAUTE COUTURE. In pagina accanto: look di lana e seta di Zouli, look puntiforme di lana e seta impunturata, top di cotone e rafia, "Rosaire", VALENTINO HAUTE COUTURE.*

# JULIA NOBIS

HEIGHT 5'11 HAIR BLONDE EYES BLUE BUST 32 WAIST 23 HIPS 34 SHOE 10 1/2



# JULIA NOBIS

HEIGHT 5'11 HAIR *BLONDE* EYES *BLUE* BUST 32 WAIST 23 HIPS 34 SHOE 10 1/2



DOCUMENT



**Julia/12**

JULIA NOBIS

HEIGHT 5'11 HAIR *BLONDE* EYES *BLUE* BUST 32 WAIST 23 HIPS 34 SHOE 10 1/2



## JULIA NOBIS

HEIGHT 5'11 HAIR BLONDE EYES BLUE BUST 32 WAIST 23 HIPS 34 SHOE 10 1/2



Reflect!

Autonomy.

Julia Nobis.



# JULIA NOBIS

HEIGHT 5'11 HAIR BLONDE EYES BLUE BUST 32 WAIST 23 HIPS 34 SHOE 10 1/2



# JULIA NOBIS

HEIGHT 5'11 HAIR *BLONDE* EYES *BLUE* BUST 32 WAIST 23 HIPS 34 SHOE 10 1/2