

HEIGHT *5'11*
HAIR *BROWN*
EYES *BROWN*
BUST *34*
WAIST *27*
HIPS *37*
SHOE *10 1/2*

dna
MODEL MANAGEMENT LLC

555 WEST 25TH ST, 6TH FL NEW YORK, NY 10001 TEL. 212.226.0080 FAX 212.226.7711 dnamodels.com

Perfect



Kesewa Aboah by
Willy Vanderperre.

Substance.

KESEWA ABOAH

Kesewa wears check wool shirt and
check stretch wool tights both
by **Burberry**



Hair **Anthony Turner** Make-up **Lynsey Alexander**
Manicure **Chisato Yamamoto** Production **Tiagi**
Executive producer **Chantelle-Shakila Tiagi**
Production manager **Martha Barr**
Casting **Anita Bilton and Calvin Wilson** at **Establishment Casting**
Talent **Kesewa Aboah** Digital technician **Henri Coutant**
Photographic assistance **Romain Dubus, Richard Cook, Petros Poyialgi**
Fashion assistance **Julia Veitch, Ned Sims** Hair assistance **John Allan**
Make-up assistance **Phoebe Brown**
Production assistance **Morgan Shepherd, Lily Barham Watkins**
Location **Gas Studios, London**



KESEWA ABOAH

HEIGHT 5'11 HAIR *BROWN* EYES *BROWN* BUST 34 WAIST 27 HIPS 37 SHOE 10 1/2



Shirt, £440, MARINA RINALDI BY SARA BATTAGLIA. Jacket, £675, PHILOSOPHY DI LORENZO SERAFINI. Earrings, £545, CHARLOTTE CHESSNAIS. STYLIST'S ASSISTANT: Crystalle Cox. MODEL: Keesewa at Viva Model Management. HAIR: Naomi Regan. HAIR ASSISTANT: Luka Pagani. MAKE-UP: Anna Payne using CHANEL Les Beiges Summer To-Go 2023 and CHANEL Hydra Beauty Mirco Crème Yeux. NAILS: Robbie Tomkins using Bio Sculpture. CASTING: Francesca Hartley for KIN Casting



Jacket and bra, both price on request, N21 BY ALESSANDRO DELL'ACQUA. Shirt, £140, TERLA. Trousers, £349, POLO RALPH LAUREN

KESEWA ABOAH

HEIGHT 5'11 HAIR BROWN EYES BROWN BUST 34 WAIST 27 HIPS 37 SHOE 10 1/2



115



KESEWA ABOAH

HEIGHT 5'11 HAIR BROWN EYES BROWN BUST 34 WAIST 27 HIPS 37 SHOE 10 1/2



Vest, £490, and jacket, £1,250, both STELLA McCARTNEY. Skirt, £325, REJINA PYO. Gold bangle, about £485, LITTLE LIPPNER. Earrings, model's own. Pendant, £125, COMPLETEDWORKS. Bag, £1,200, SPORTMAX. Trainers (just seen), £90, ADIDAS ORIGINALS



Dress, £760, ISABEL MARANT. Earrings, £545, CHARLOTTE CHESNAIS

KESEWA ABOAH

HEIGHT 5'11 HAIR BROWN EYES BROWN BUST 34 WAIST 27 HIPS 37 SHOE 10 1/2



SQUARING OFF
Swathed in JW Anderson's gingham-patterned blanket coat (\$1,850) and belt (both at jwanderson.com), model Keesewa Aboah calls to mind Studio 54-era Diana Ross looking every bit "The Boss."

KESEWA ABOAH

HEIGHT 5'11 HAIR *BROWN* EYES *BROWN* BUST 34 WAIST 27 HIPS 37 SHOE 10 1/2



KESEWA ABOAH

HEIGHT 5'11 HAIR *BROWN* EYES *BROWN* BUST 34 WAIST 27 HIPS 37 SHOE 10 1/2



JEWELLERY

ANA KHOURI

With bold imagination, Ana Khouri rethinks how jewellery can adorn the body. At the sculptor-turned-jewellery designer's exhibition at Phillips in London last month, large diamonds in mixed cuts danced around and dangled from every part of the cor, while necklaces sat off-centre with the spars but striking punctuation of neon-bright gems. "I love the challenge of bringing movement and wearability together to make something I haven't seen before," says the New York-based designer beloved by fashion editors and celebrities the world over. The soft drupe of her diamond and emerald hair piece - which can also be worn as earrings and a rievre necklace - is the perfect union of high jewellery and casual elegance.

DIAMOND AND EMERALD HAIR PIECE, AND DIAMOND RING, BOTH PRICE ON REQUEST. ANA KHOURI (BGLERO), 1100L DRESS, £3,540, BOTH ERMANN0 SCERVINO



JEWELLERY

NIKOS KOULIS

"I'm always motivated by taking a classic pillar from the past and redefining it with my own signature," says Nikos Koulis. At the under the Athens-based jeweller's work is worn by women including the Duchess of Sussex and Scarlett Johansson. With his bestselling Our collection, he succeeded in making art deco feel fresh. Now, with Feels, he turns his attention to that mid-century staple: the snake chain. The challenge: to manipulate the gold into seemingly effortless curves and knots (the latter in homage to Grace's martini tradition) that hold their shape but retain softness and sensuality. Mission accomplished.

GOLD AND DIAMOND EARRINGS AND GOLD, DIAMOND AND ENAMEL NECKLACE, BOTH PRICE ON REQUEST. NIKOS KOULIS, DRESS, £8,600, CHANEL, FOR STYLISTS, ALL PAGES, SEE VOGUE INFORMATION

KESEWA ABOAH

HEIGHT 5'11 HAIR BROWN EYES BROWN BUST 34 WAIST 27 HIPS 37 SHOE 10 1/2



KESEWA ABOAH

HEIGHT 5'11 HAIR *BROWN* EYES *BROWN* BUST 34 WAIST 27 HIPS 37 SHOE 10 1/2



KESEWA ABOAH

HEIGHT 5'11 HAIR *BROWN* EYES *BROWN* BUST 34 WAIST 27 HIPS 37 SHOE 10 1/2



KESEWA ABOAH

HEIGHT 5'11 HAIR BROWN EYES BROWN BUST 34 WAIST 27 HIPS 37 SHOE 10 1/2



KESEWA WEARS VINTAGE MILENYUM SEQUIN JACKET AND BLACK JERSEY DRESS BOTH BY **RIFAT OZBEK** (1990 COLLECTION) FROM FELIX VINTAGE ARCHIVE; VINTAGE BLACK WOOL BEANIE HAT FROM **ROKIT**; VINTAGE FEATHERS FROM **MODES & MORE**; ARGYLE SOCKS BY **BURLINGTON**; BLACK LEATHER PRINCETON SLIPPERS BY **GUCCI**; LARGE GOLD HOOP EARRINGS BY **SLIM BARRETT**; NECKLACE, BRACELETS AND RINGS ALL KESEWA'S OWN

300



KESEWA WEARS VINTAGE BLACK FRINGED COTTON DRESS BY **RIFAT OZBEK** (1992 COLLECTION) FROM COLLECTION LA VINTAGE ARCHIVE; GOLD CHAIN NECKLACES AND SILVER HOOP EARRINGS ALL BY **SLIM BARRETT**; GOLD AFROCA CHAIN NECKLACE, SILVER CHAIN BRACELETT, SILVER BANGLE AND RINGS ALL KESEWA'S OWN

303

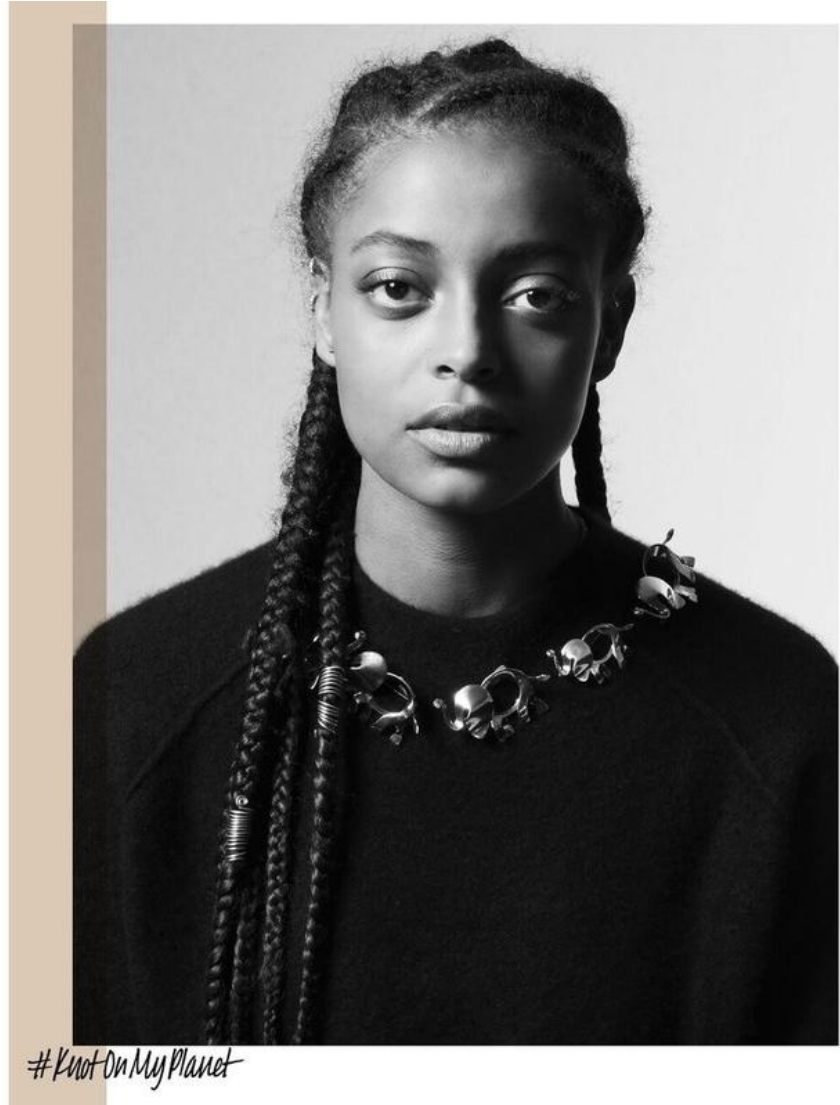
KESEWA ABOAH

HEIGHT 5'11 HAIR *BROWN* EYES *BROWN* BUST 34 WAIST 27 HIPS 37 SHOE 10 1/2



Remember weddings? The pomp, the circumstance, the romance... and the party? With precious few of them happening in real life, we dreamed up our own "I do" celebration for the ages. Photographed by Autumn de Wilde.

HEAD OVER



KESEWA ABOAH

HEIGHT 5'11 HAIR BROWN EYES BROWN BUST 34 WAIST 27 HIPS 37 SHOE 10 1/2



KESEWA WEARS DENIM OVER-PRINT COAT, COTTON DRILL TROUSERS AND COMPACT POPLIN OVER-PRINT SHIRT ALL BY PRADA; JEWELLERY ALL KESEWA'S OWN



KESEWA WEARS SATIN BOMBER JACKET BY SACAI, LACE DRESS BY ANIYE BY, BLACK RUFFLE DRESS (WOIN BENEATH) BY SIMONE ROCHA; SOCKS BY NIKE; BLACK MULES BY AGL

Hair: David Von Cannon / Make-up: Lisa Houghton / Manicure: Maki Sakamoto / Retouching: Justine Ford at Shouwei Studios NYC / Production: Heather Robbins for CLM / Photographic assistance: Lee Wall / Fashion assistance: Emma Stahl, Erika Gocher, Jonathan Coker. Special thanks to The Standard Hotel, The Broom Boon Room and The VVO.

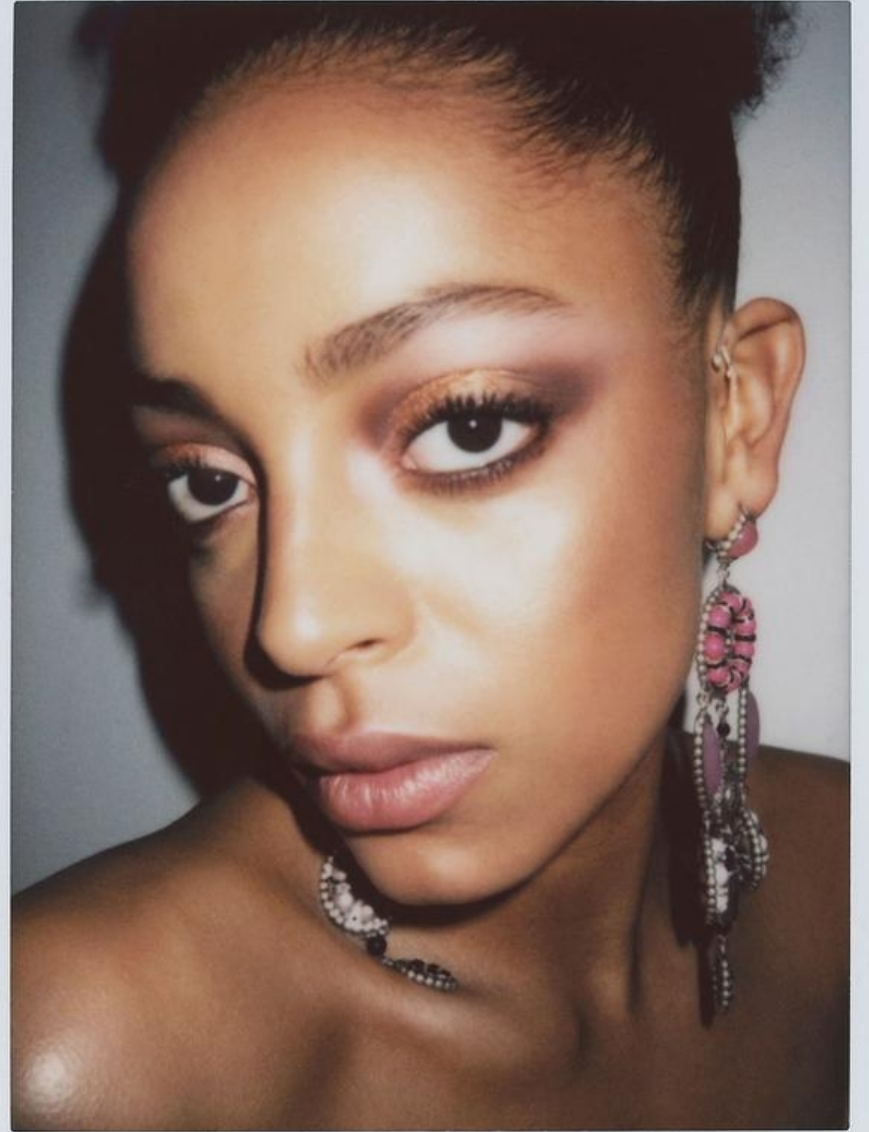
KESEWA ABOAH

HEIGHT 5'11 HAIR BROWN EYES BROWN BUST 34 WAIST 27 HIPS 37 SHOE 10 1/2



KESEWA ABOAH

HEIGHT 5'11 HAIR *BROWN* EYES *BROWN* BUST 34 WAIST 27 HIPS 37 SHOE 10 1/2



KESEWA ABOAH

HEIGHT 5'11 HAIR *BROWN* EYES *BROWN* BUST 34 WAIST 27 HIPS 37 SHOE 10 1/2



IT'S MY
HOUSE

Photography HANNA MOON Styling EMMA WYMAN

KESEWA ABOAH

HEIGHT 5'11 HAIR BROWN EYES BROWN BUST 34 WAIST 27 HIPS 37 SHOE 10 1/2



KESEWA ABOAH

HEIGHT 5'11 HAIR BROWN EYES BROWN BUST 34 WAIST 27 HIPS 37 SHOE 10 1/2



KESEWA ABOAH

HEIGHT 5'11 HAIR *BROWN* EYES *BROWN* BUST 34 WAIST 27 HIPS 37 SHOE 10 1/2



KESEWA ABOAH

HEIGHT 5'11 HAIR *BROWN* EYES *BROWN* BUST 34 WAIST 27 HIPS 37 SHOE 10 1/2