

HEIGHT *5'10 1/2*
HAIR *BROWN*
EYES *BLUE*
BUST *31 1/2*
WAIST *23*
HIPS *34*
SHOE *7 1/2*

dna
MODEL MANAGEMENT LLC

555 WEST 25TH ST, 6TH FL NEW YORK, NY 10001 TEL. 212.226.0080 FAX 212.226.7711 dnamodels.com



KIKI WILLEMS



KIKI WILLEMS

HEIGHT 5'10 1/2 HAIR *BROWN* EYES *BLUE* BUST 31 1/2 WAIST 23 HIPS 34 SHOE 7 1/2



Top and bag SECOND SKIN ARCHIVE, shorts stylist's own



T-shirt stylist's own

KIKI WILLEMS

HEIGHT 5'10 1/2 HAIR BROWN EYES BLUE BUST 31 1/2 WAIST 23 HIPS 34 SHOE 7 1/2



Dress MISS NOTHING APPAREL.



Dress THE GROTESQUE ARCHIVE, tights stylist's own

KIKI WILLEMS

HEIGHT 5'10 1/2 HAIR *BROWN* EYES *BLUE* BUST 31 1/2 WAIST 23 HIPS 34 SHOE 7 1/2



KIKI WILLEMS

HEIGHT 5'10 1/2 HAIR *BROWN* EYES *BLUE* BUST 31 1/2 WAIST 23 HIPS 34 SHOE 7 1/2



KIKI WILLEMS

HEIGHT 5'10 1/2 HAIR *BROWN* EYES *BLUE* BUST 31 1/2 WAIST 23 HIPS 34 SHOE 7 1/2



CHAMPAGNE SILK SATIN HALTERNECK POLO RALPH LAUREN,
WITH BLACK SHOULDER TOP AND BLUE UPCYCLED SPORT LEGGINGS
SKIRT ELEANOR CHAPMAN

335

PURPLE



the 30 yrs issue
EMPORIO ARMANI by **KATJA RAHLWES**

KIKI WILLEMS

HEIGHT 5'10 1/2 HAIR *BROWN* EYES *BLUE* BUST 31 1/2 WAIST 23 HIPS 34 SHOE 7 1/2



GRAY SKIRT, BRALETTE, AND WHITE AND BEIGE BRIEFS MIU MIU,
WITH GRAY CUT-OUT JACKET AND OFF-WHITE TANK TOP ELEANOR
CHAPMAN, CRYSTAL TOP LUDDIC DE SAINT SERIN,
GRAY JOGGERS CHLOÉ HARDIN, BLACK AND WHITE SHEER
STOCKINGS Y/PROJECT, WHITE SOCKS FALKE,
AND BLACK CLOSED-TOE HEELS WE11DONE



BLACK SHAP PANEL PULLOVER AND MAXI SKIRT Y/PROJECT,
WITH OFF-WHITE TANK TOPS BOTTEGA VENETA, BLACK AND IVORY
WRAP SKIRT KIERAN RODERICK, WHITE SOCKS FALKE,
AND BLACK CLOSED-TOE HEELS WE11DONE

KIKI WILLEMS

HEIGHT 5'10 1/2 HAIR *BROWN* EYES *BLUE* BUST 31 1/2 WAIST 23 HIPS 34 SHOE 7 1/2



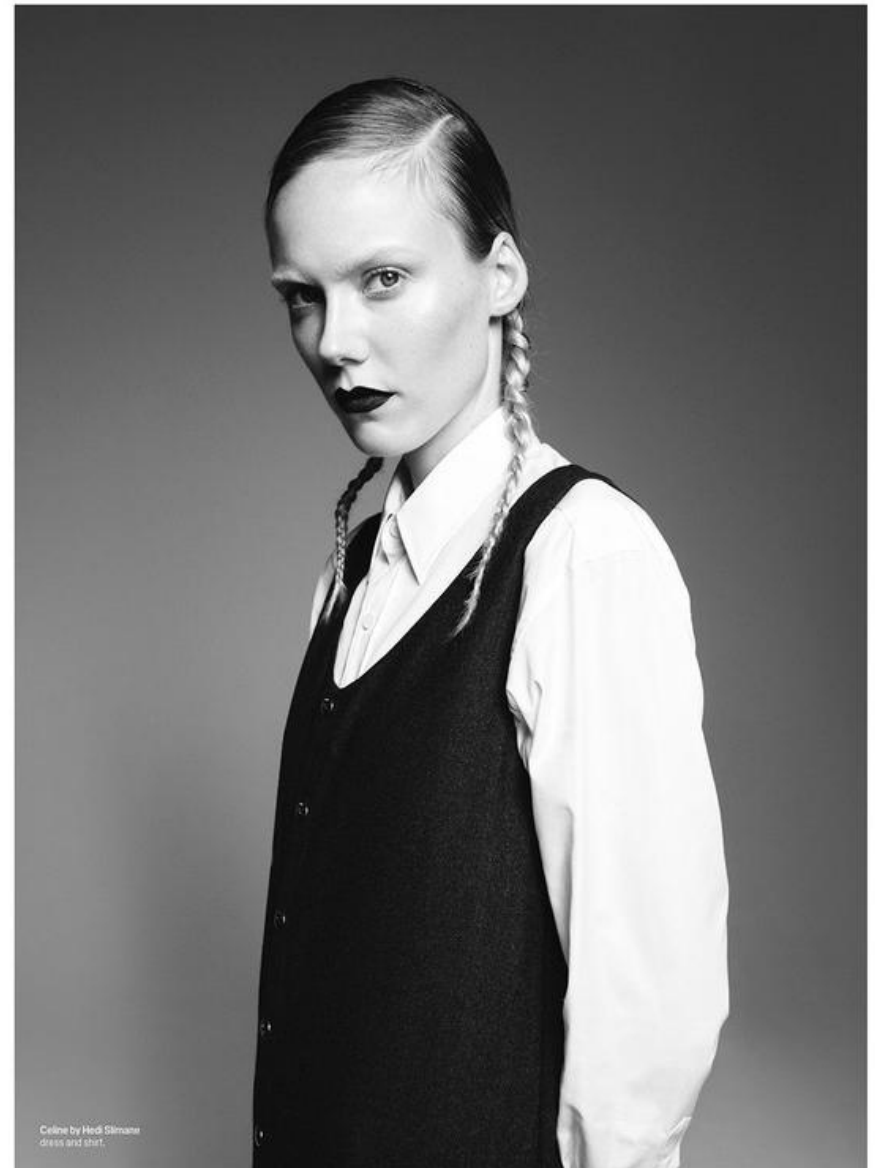
KIKI WILLEMS

HEIGHT 5'10 1/2 HAIR *BROWN* EYES *BLUE* BUST 31 1/2 WAIST 23 HIPS 34 SHOE 7 1/2



KIKI WILLEMS

HEIGHT 5'10 1/2 HAIR BROWN EYES BLUE BUST 31 1/2 WAIST 23 HIPS 34 SHOE 7 1/2



KIKI WILLEMS

HEIGHT 5'10 1/2 HAIR *BROWN* EYES *BLUE* BUST 31 1/2 WAIST 23 HIPS 34 SHOE 7 1/2



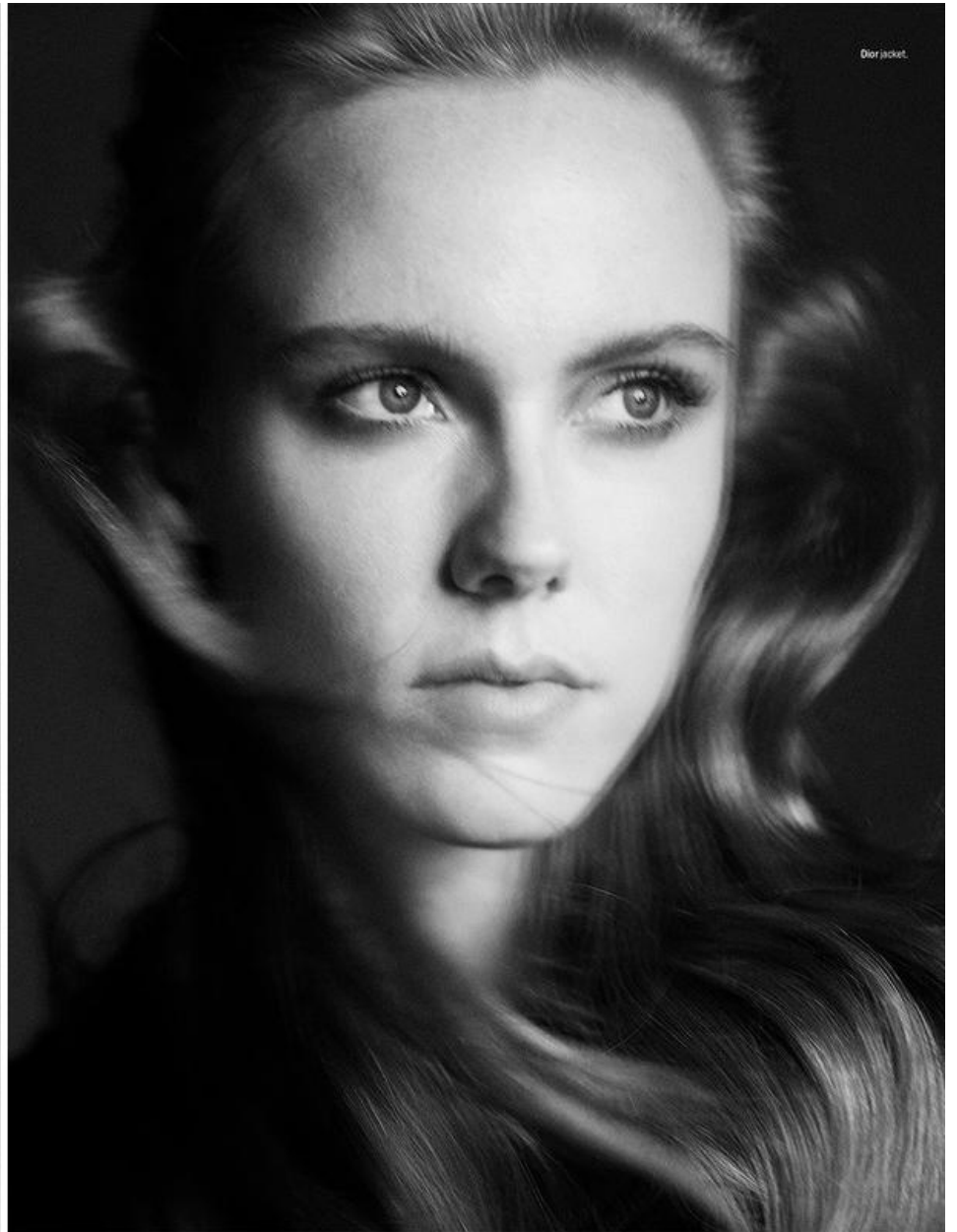
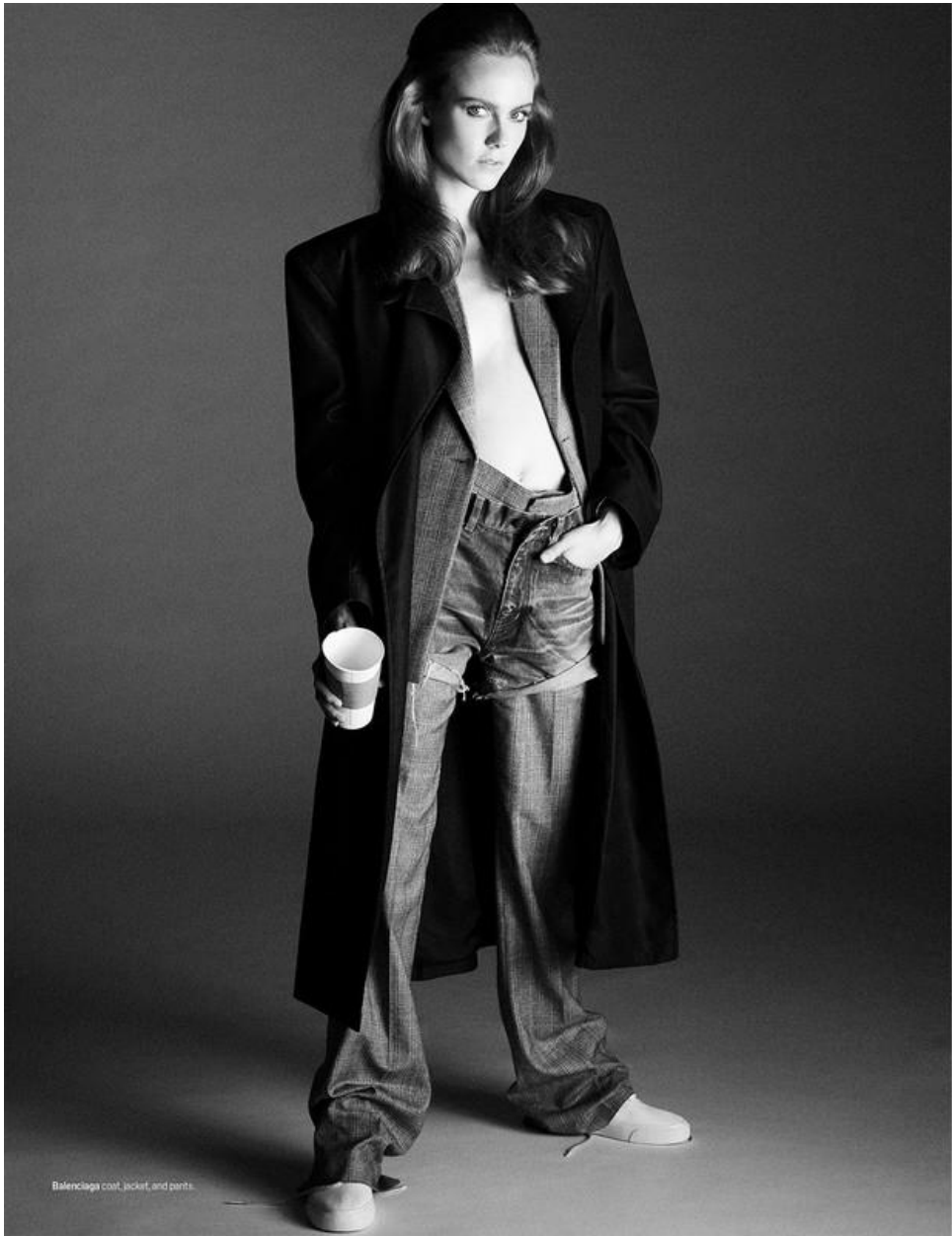
Burberry jacket and shorts;
Costume Studio London hat;
Celine by Hedi Slimane
socks; Marc Jacobs shoes.



Coach sweater, shirt, and pants.

KIKI WILLEMS

HEIGHT 5'10 1/2 HAIR *BROWN* EYES *BLUE* BUST 31 1/2 WAIST 23 HIPS 34 SHOE 7 1/2



KIKI WILLEMS

HEIGHT 5'10 1/2 HAIR *BROWN* EYES *BLUE* BUST 31 1/2 WAIST 23 HIPS 34 SHOE 7 1/2



KIKI WILLEMS

HEIGHT 5'10 1/2 HAIR BROWN EYES BLUE BUST 31 1/2 WAIST 23 HIPS 34 SHOE 7 1/2



Abito in georgette di seta
 e gonna con applicazioni di foglie
 di organza VALENTINO;
 guanti di pelle SERMONETA.
 → Nella pagina accanto.
 Blazer di pelle con cuciture
 a contrasto MM6 MAISON
 MARGELA; camicia in crêpe
 di seta BALENCIAGA; gonna
 a pieghe di agnello lucido
 DIOR; guanti WING +
 WFFT. Make-up Hannah
 Murray; Hair Tomo Kida @
 Streeters using Oribe. Set
 Design Gerard Santos. On set
 Travis Kivvel & Roberto Javier
 Sosa @ That One Production.

KIKI WILLEMS

HEIGHT 5'10 1/2 HAIR BROWN EYES BLUE BUST 31 1/2 WAIST 23 HIPS 34 SHOE 7 1/2



KIKI WILLEMS

HEIGHT 5'10 1/2 HAIR BROWN EYES BLUE BUST 31 1/2 WAIST 23 HIPS 34 SHOE 7 1/2

RIKA



MAGAZINE

ISSUE NO. 21
A/W 2021



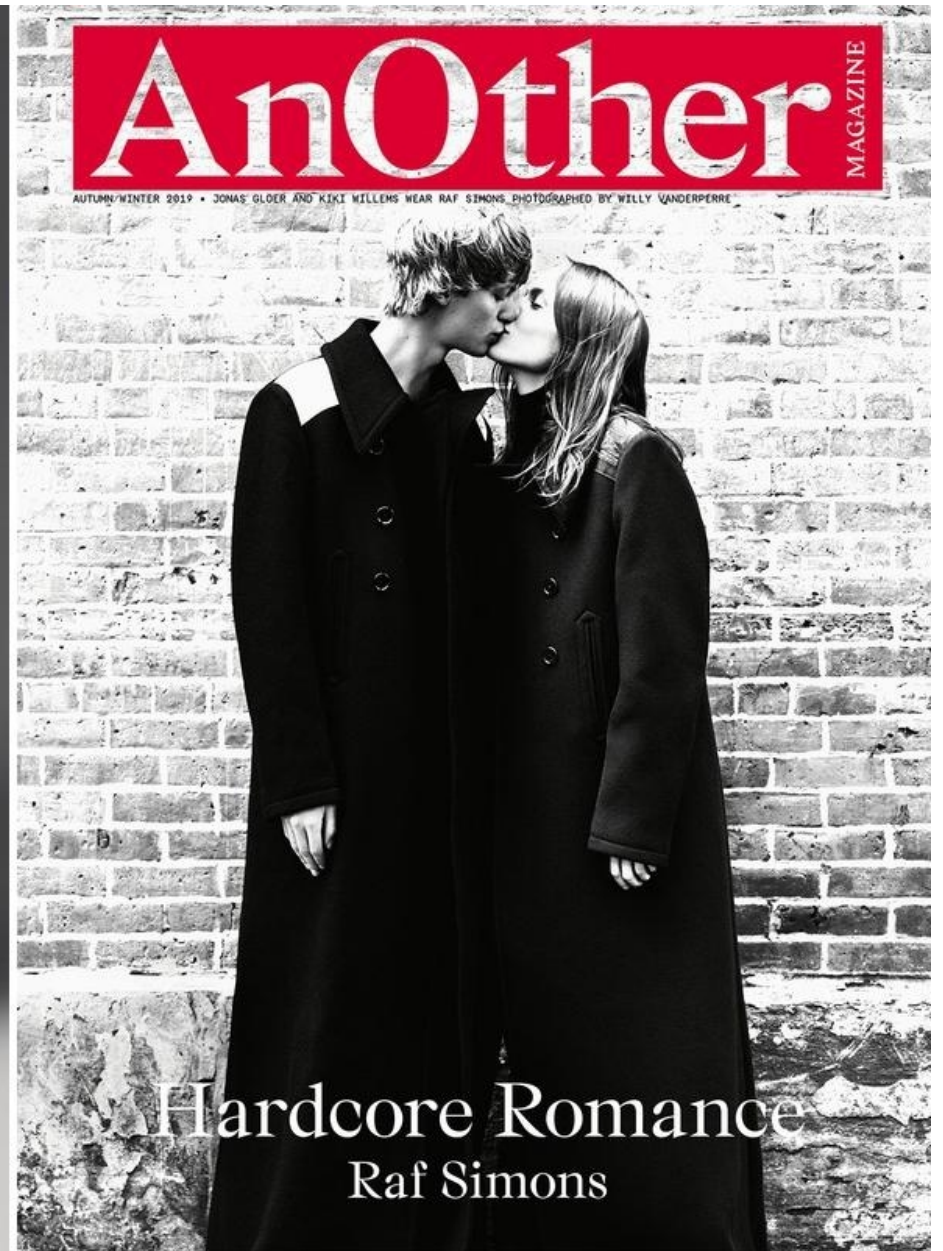
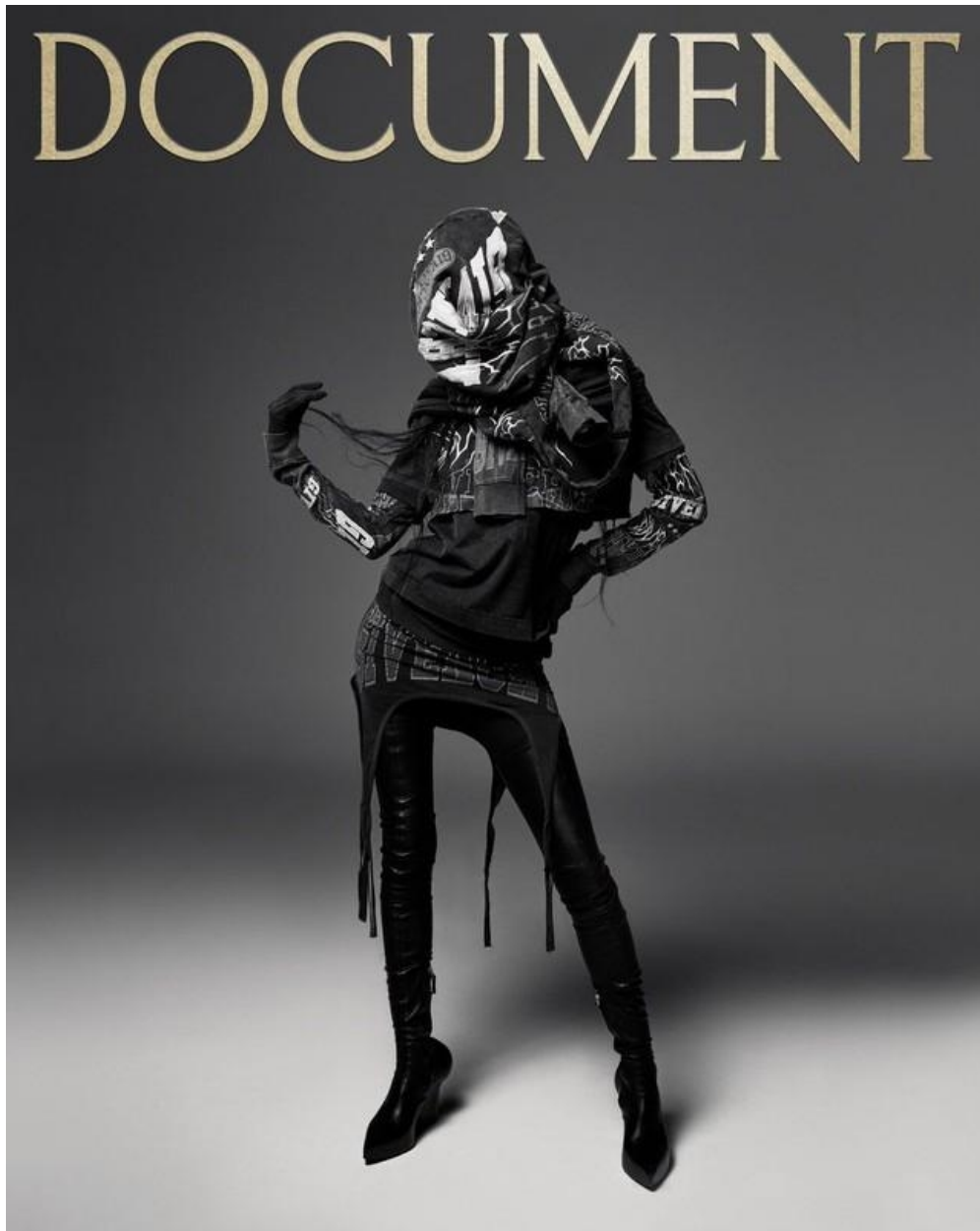
KIKI WILLEMS

HEIGHT 5'10 1/2 HAIR BROWN EYES BLUE BUST 31 1/2 WAIST 23 HIPS 34 SHOE 7 1/2



KIKI WILLEMS

HEIGHT 5'10 1/2 HAIR *BROWN* EYES *BLUE* BUST 31 1/2 WAIST 23 HIPS 34 SHOE 7 1/2



KIKI WILLEMS

HEIGHT 5'10 1/2 HAIR BROWN EYES BLUE BUST 31 1/2 WAIST 23 HIPS 34 SHOE 7 1/2



KIKI WILLEMS

HEIGHT 5'10 1/2 HAIR BROWN EYES BLUE BUST 31 1/2 WAIST 23 HIPS 34 SHOE 7 1/2



Kiki/12

KIKI WILLEMS

HEIGHT 5'10 1/2 HAIR *BROWN* EYES *BLUE* BUST 31 1/2 WAIST 23 HIPS 34 SHOE 7 1/2