

HEIGHT *5'11*
HAIR *BLONDE*
EYES *BLUE*
BUST *32 1/2*
WAIST *23 1/2*
HIPS *34 1/2*
SHOE *10 1/2*

dna
MODEL MANAGEMENT LLC

555 WEST 25TH ST, 6TH FL NEW YORK, NY 10001 TEL. 212.226.0080 FAX 212.226.7711 dnamodels.com



KIRSTY HUME



La suma de prendas y guantes de piel apunta a un referente claro y empoderador: las superheroínas de la ciencia ficción. Magia sobre el asfalto.
Vestido de Hermès; y guantes largos de piel, de Guantes Varadé (100 €).

Nota de belleza
La sensualidad de una melena extralarga va más allá de los límites de la moda o la edad. Para lucirla brillante y sana, L'Oréal Paris recomienda el uso de Dream Long Hot Max, un ritual de cuidado en dos pasos compuesto por una mascarilla intensiva y un gorro térmico que desprende calor al masajearlo.

KIRSTY HUME

HEIGHT 5'11 HAIR *BLONDE* EYES *BLUE* BUST 32 1/2 WAIST 23 1/2 HIPS 34 1/2 SHOE 10 1/2



Para suavizar la suntuosidad de las lentejuelas y las joyas, nada como recurrir a las siluetas minimalistas. Aquí, la forma lo es todo. En esta página, Kirsty Hume lleva top de tul de manga larga (5.990 €) y vestido con lentejuelas (8.790 €), ambos de Givenchy. En la página siguiente, abrigo de cuero de Isabel Marant; y criollas hexagonales en oro rosa con diamantes talla brillante, de Suárez (1.995 €).

La chica del

Con un pie en la ciencia ficción, llamativas prendas metalizadas y gabardinas y vestidos de cuero negro ofrecen un acercamiento significativo, pero fácil de llevar, a la tendencia futurista. La icónica modelo *Kirsty Hume* la interpreta para demostrar que, sí, es posible hacerla realidad.

MAÑANA

Fotografía DANIEL RIERA Realización VITO CASTELO



Isabel Marant, con siluetas que beben de los años ochenta, y Gucci, cuya colección tomó como punto de partida el ensayo *Manifiesto Cyborg* (1983), de Donna Haraway, evocan fantasmas del futuro pasado. En esta página, abrigo de Isabel Marant; botas altas dormidas, de Chanel (1.900 €); y medias negras de Calzedonia. En la página siguiente, vestido rojo de lentejuelas bordadas en satén, de Gucci.

Modelo: Kirsty Hume (Viva Barcelona). Peluquería: Karim Belghiran (Artist Paris). Maquillaje: Pep Gay (Management Artists). Manicura: Vanessa Juez (Highway Management). Ayudantes de realización: Annia Prat y Raquel Mejías.

KIRSTY HUME

HEIGHT 5'11 HAIR BLONDE EYES BLUE BUST 32 1/2 WAIST 23 1/2 HIPS 34 1/2 SHOE 10 1/2



hot stuff

There is a small problem on set today, and it has something to do with the fact that a photography outfit and a supermodel and a team of beauty professionals have gathered in California's Sierra Pelona Mountains, a geographic region not necessarily known for its hospitality. It is one zillion degrees, and the sun is still climbing. It's the kind of day when foundation will melt right off of you, so it's a good thing 43-year-old Kirsty Hume isn't wearing much of anything. There is no wind, which could be disappointing for a hairstylist. "But if there's no wind," says hairstylist Tamas Tuzes, "I'll create wind." So he pulls a small leaf blower out of his kit and aims it at Hume, sending her loooong (and 100 percent her own) blonde hair flying in all directions. Wind, according to Tuzes, is a natural hair-texture builder. But when the elements don't show up to set, it helps to have a couple of standbys on hand. Like R + Co's Soft Wave Spray and Manequin's Styling Paste. The latter was scrunched into Hume's hair from the midlengths through the ends, while the former was dusted from root to tip—two of Tuzes's favorite tricks for creating low-key waves. Well, those and a leaf blower. —BRENNAN KILBANE

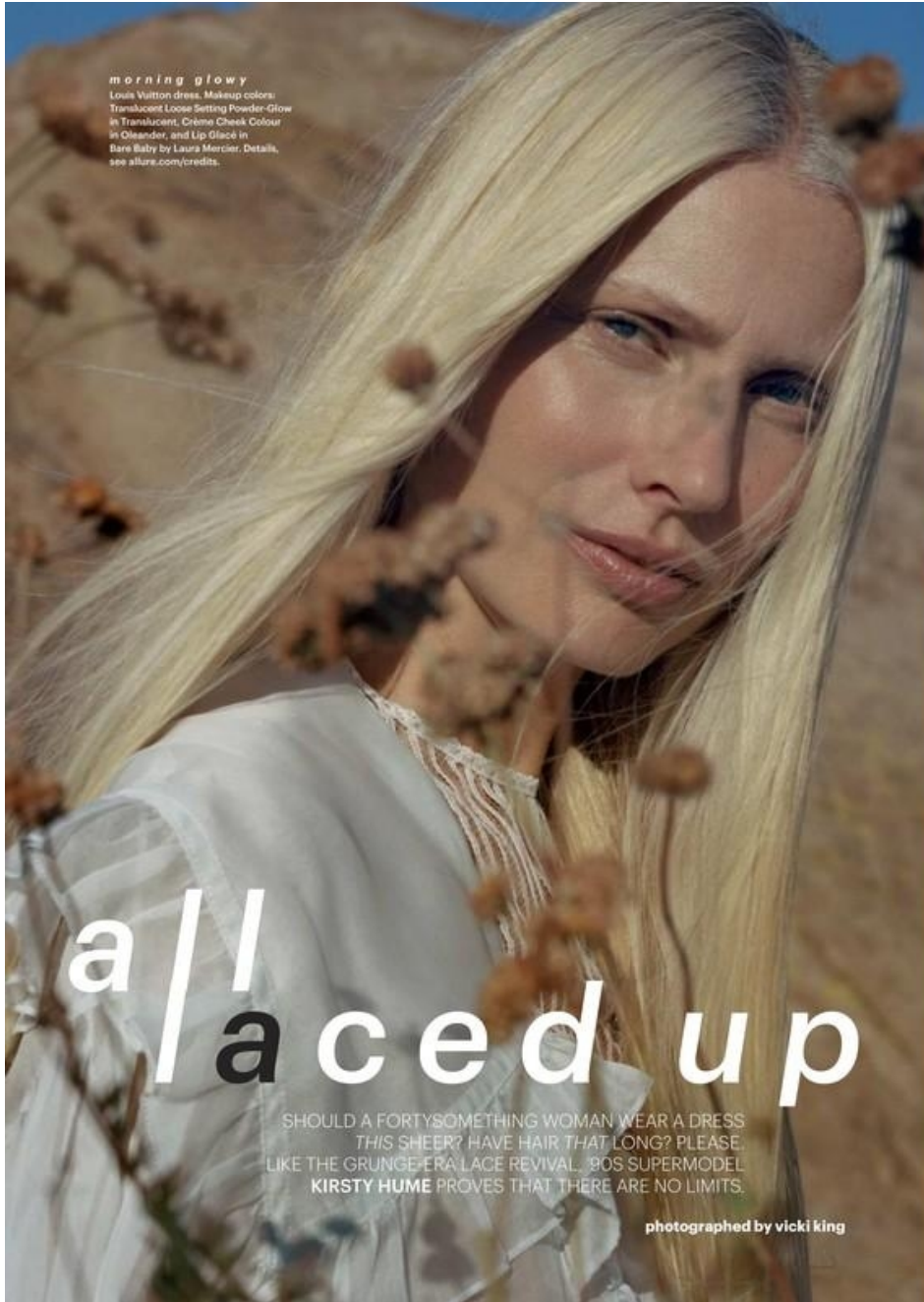


gothic art

Gothy dress: The Row dress (in hand). Details, see allure.com/credits. These pages: Fashion stylist: Katie Burnett. Hair: Tamas Tuzes. Makeup: John McKay. Manicure: Ashley Johnson. Model: Kirsty Hume. Set design: Bryn Rowett. Production: Kiori for Kinokai Group.

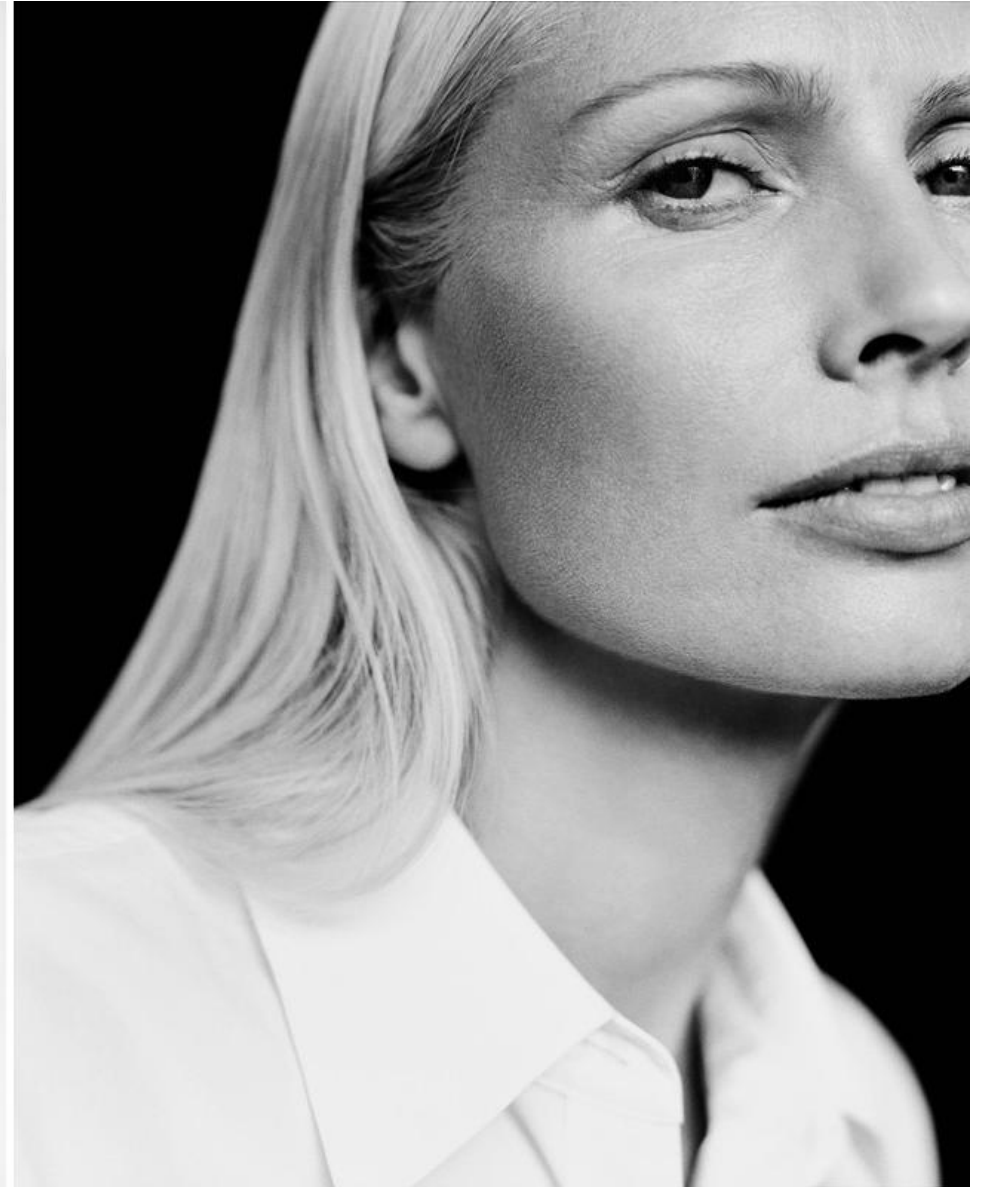
KIRSTY HUME

HEIGHT 5'11 HAIR BLONDE EYES BLUE BUST 32 1/2 WAIST 23 1/2 HIPS 34 1/2 SHOE 10 1/2



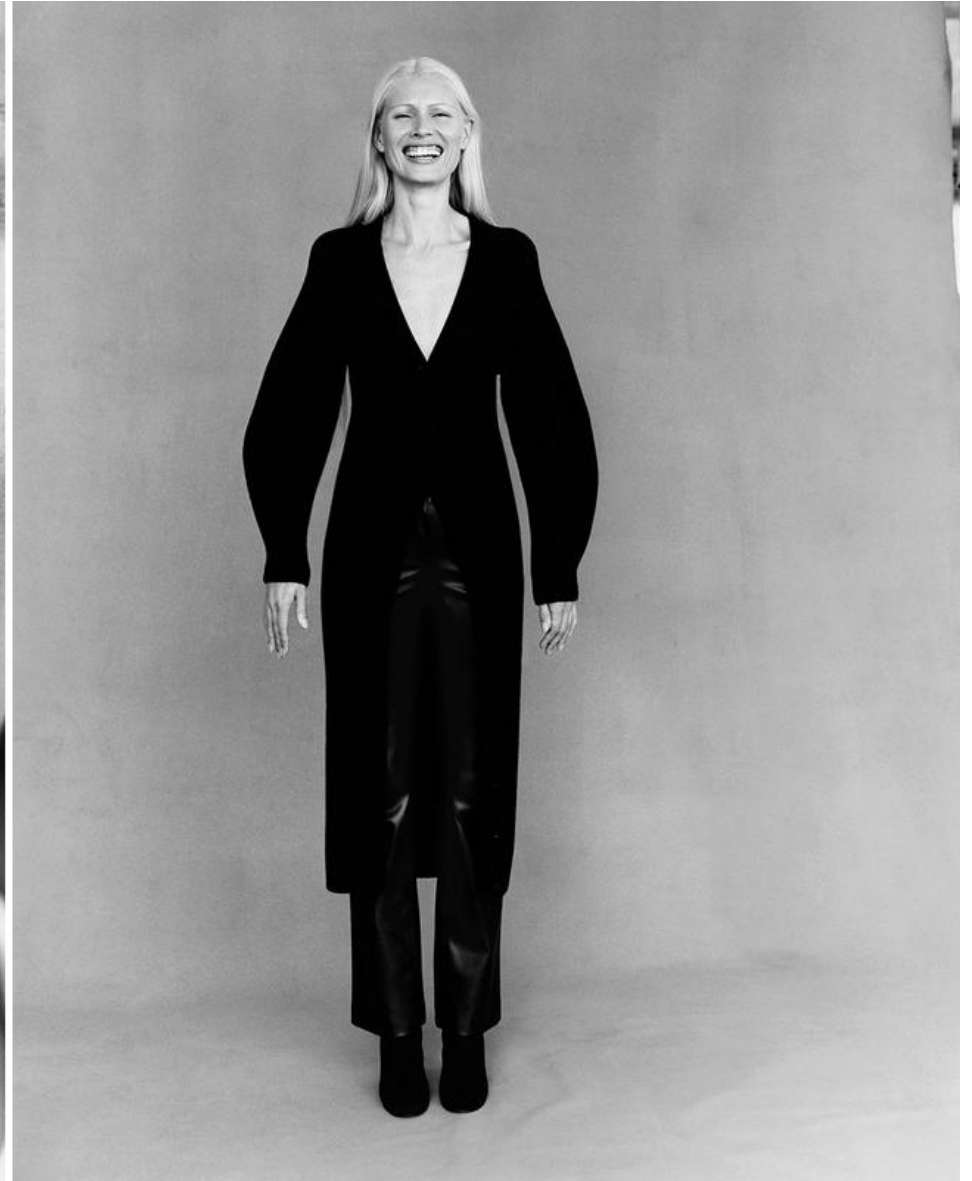
KIRSTY HUME

HEIGHT 5'11 HAIR *BLONDE* EYES *BLUE* BUST 32 1/2 WAIST 23 1/2 HIPS 34 1/2 SHOE 10 1/2



KIRSTY HUME

HEIGHT 5'11 HAIR *BLONDE* EYES *BLUE* BUST 32 1/2 WAIST 23 1/2 HIPS 34 1/2 SHOE 10 1/2



KIRSTY HUME

HEIGHT 5'11 HAIR *BLONDE* EYES *BLUE* BUST 32 1/2 WAIST 23 1/2 HIPS 34 1/2 SHOE 10 1/2

This page: Kirsty Hume wears leather coat, £6,080. Cashmere rollneck, £1,030. Gabardine trousers, £1,130. All Hermès. Earrings, from £840. Céline. Opposite: cotton trench coat, £1,300. Ports 1961, at Liberty. Silk blouse, £825, Rokasanda. Hair: Sam McKnight, using products. Make-up: Val Garland, using L'Oréal Paris. Nails: Jenni Draper. Beauty director: Jessica Diner. With thanks to Big Sky Studios



Long story short

Models Kirsty Hume and Cecilia Chancellor are among a coterie of chic older women choosing to wear their hair long. Kathleen Baird-Murray reveals what stops them and her – from going for the chop. Photographs by Richard Burbridge. Styling by Kate Phelan

KIRSTY HUME

HEIGHT 5'11 HAIR BLONDE EYES BLUE BUST 32 1/2 WAIST 23 1/2 HIPS 34 1/2 SHOE 10 1/2



KIRSTY HUME, 39
 AYRSHIRE BEAUTY KIRSTY NOW LIVES IN CALIFORNIA WITH HER BOYFRIEND AND HER 11-YEAR-OLD DAUGHTER, VIOLET. FAMOUS BY 18, SHE NEVER RETIRED, BUT DID STEP OUT OF THE LIMELIGHT IN HER LATE TWENTIES TO HAVE VIOLET—AND LATER TO STUDY PERMACULTURE. Cashmere/cotton sweater, £335; Margaret Howell. Silk slip dress, from £330; Nili Lotan. Jewellery, Kirsty's own
 ANGELO PENNETTA

KIRSTY HUME

HEIGHT 5'11 HAIR *BLONDE* EYES *BLUE* BUST 32 1/2 WAIST 23 1/2 HIPS 34 1/2 SHOE 10 1/2



Le top néo-hippie
concocte ses produits
dans sa propriété de
Topanga Canyon, district
emblématique de la *slow
life* à la californienne,
où se retrouvent
les partisans d'un mode
de vie "éco-conscient".



KIRSTY HUME

HEIGHT 5'11 HAIR *BLONDE* EYES *BLUE* BUST 32 1/2 WAIST 23 1/2 HIPS 34 1/2 SHOE 10 1/2



KIRSTY HUME

HEIGHT 5'11 HAIR *BLONDE* EYES *BLUE* BUST 32 1/2 WAIST 23 1/2 HIPS 34 1/2 SHOE 10 1/2



Kirsty is wearing a silk knit tracksuit top and technical jersey tracksuit trousers.

AnOther Magazine



Opposite page: Hand-crocheted floral dress with bell sleeves. This page: Fine crepe blouse and technical jersey tracksuit trousers. Glasses, photographer's own.

KIRSTY HUME

HEIGHT 5'11 HAIR *BLONDE* EYES *BLUE* BUST 32 1/2 WAIST 23 1/2 HIPS 34 1/2 SHOE 10 1/2



KIRSTY HUME

HEIGHT 5'11 HAIR *BLONDE* EYES *BLUE* BUST 32 1/2 WAIST 23 1/2 HIPS 34 1/2 SHOE 10 1/2



KIRSTY HUME

HEIGHT 5'11 HAIR *BLONDE* EYES *BLUE* BUST 32 1/2 WAIST 23 1/2 HIPS 34 1/2 SHOE 10 1/2



KIRSTY HUME

HEIGHT 5'11 HAIR *BLONDE* EYES *BLUE* BUST 32 1/2 WAIST 23 1/2 HIPS 34 1/2 SHOE 10 1/2

**AROUND
WE GO**

Easy, ethereal micro-florals are perfect for a sunset spin. On Hume: Philosophy di Lorenzo Serafini dress, \$2,295; Barneys New York, NYC. On Violet: Chloé dress; Chloé boutiques. Michael Kors Collection top, \$595; select Michael Kors stores. In this story: hair, Jimmy Paul for Bumble and Bumble; makeup, Dick Page. Details, see in This Issue.



“As we go through life, we find ourselves on certain paths that just kind of happen organically,” says Hume

SET DESIGN: SPENCER WIGGAM; PRODUCED BY WES OLSON FOR CONNECT THE DOTS

KIRSTY HUME

HEIGHT 5'11 HAIR *BLONDE* EYES *BLUE* BUST 32 1/2 WAIST 23 1/2 HIPS 34 1/2 SHOE 10 1/2



KIRSTY HUME

HEIGHT 5'11 HAIR *BLONDE* EYES *BLUE* BUST 32 1/2 WAIST 23 1/2 HIPS 34 1/2 SHOE 10 1/2



KIRSTY HUME

HEIGHT 5'11 HAIR *BLONDE* EYES *BLUE* BUST 32 1/2 WAIST 23 1/2 HIPS 34 1/2 SHOE 10 1/2



THIS PAGE: velvet dress,
£2,385, Saint Laurent by
Anthony Vaccarello
OPPOSITE: silk dress,
£14,180, Valentino

AGATA POSPIESZYNSKA



HARPER'S BAZAAR

OCTOBER 2017

THE FIRST AND LAST WORD IN FASHION



KIRSTY HUME

HEIGHT 5'11 HAIR *BLONDE* EYES *BLUE* BUST 32 1/2 WAIST 23 1/2 HIPS 34 1/2 SHOE 10 1/2



KIRSTY HUME

HEIGHT 5'11 HAIR *BLONDE* EYES *BLUE* BUST 32 1/2 WAIST 23 1/2 HIPS 34 1/2 SHOE 10 1/2