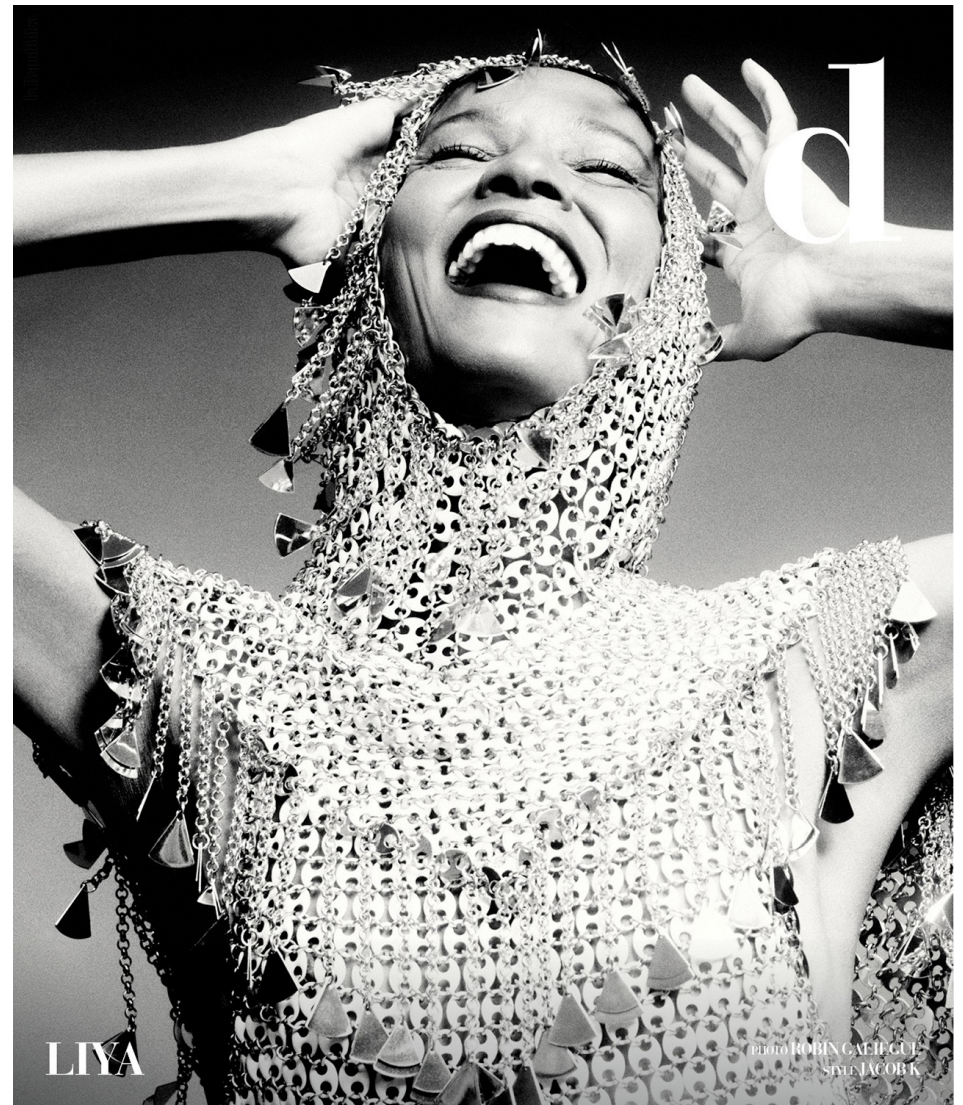


HEIGHT *5'10 1/2*  
HAIR *DARK BROWN*  
EYES *BROWN*  
BUST *32*  
WAIST *23*  
HIPS *34*  
SHOE *8 1/2*

**dna**  
MODEL MANAGEMENT LLC

555 WEST 25TH ST, 6TH FL NEW YORK, NY 10001 TEL. 212.226.0080 FAX 212.226.7711 [dnamodels.com](http://dnamodels.com)



LIYA KEBEDE



# LIYA KEBEDE

HEIGHT 5'10 1/2 HAIR *DARK BROWN* EYES *BROWN* BUST 32 WAIST 23 HIPS 34 SHOE 8 1/2



**PHOEBE PHILO**  
She's back—and how.  
It's fashion (and a  
business approach)  
on her terms: Make  
it special and unique,  
and in smaller,  
more sustainable  
numbers. Yet again,  
she catches the  
moment. Kebede  
wears Phoebe Philo  
jacket and pants;  
phoebephilo.com.

**GRACE WALES  
BONNER**  
The Jamaican British  
designer's work is  
driven by critiques of  
race, gender, and  
history—and crackles  
with the energy  
of someone who  
fearlessly engages  
with today's  
world. Kebede in  
**Wales Bonner**.  
walesbonner.net.

# LIYA KEBEDE

HEIGHT 5'10 1/2 HAIR *DARK BROWN* EYES *BROWN* BUST 32 WAIST 23 HIPS 34 SHOE 8 1/2

# SUBLIME LIYA

Photographe KARIM SADLI. Réalisation ALEKSANDRA WORONIECKA.

*Cape en crêpe de laine, et robe  
en organza à vol dentelle, Miu Miu.*



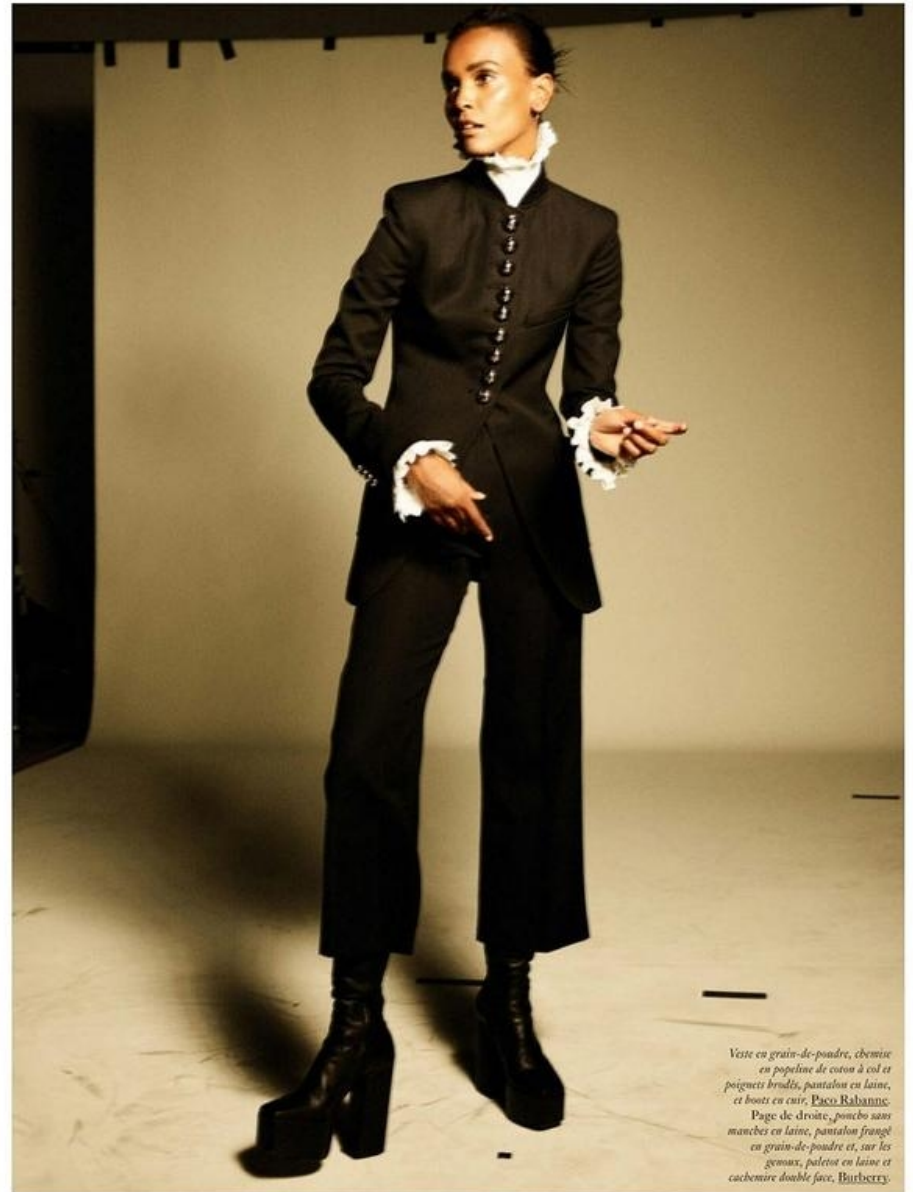
## LIYA KEBEDE

HEIGHT 5'10 1/2 HAIR DARK BROWN EYES BROWN BUST 32 WAIST 23 HIPS 34 SHOE 8 1/2





*Robe ébaissée col raillé  
 en côtes de nuit, Hermès.  
 Col haut volant en popeline  
 de coton, Paco Rabanne.  
 Page de gauche, veste et  
 jupe à franges en laine double  
 face, et chemise en popeline  
 de coton, Prada.*



*Veste en grain-de-poudre, chemise  
 en popeline de coton à col et  
 poignets brodés, pantalon en laine,  
 et boots en cuir, Paco Rabanne.  
 Page de droite, poncho sans  
 manches en laine, pantalon frangé  
 en grain-de-poudre et, sur les  
 genoux, paletot en laine et  
 cachemire double face, Burberry.*

# LIYA KEBEDE

HEIGHT 5'10 1/2 HAIR DARK BROWN EYES BROWN BUST 32 WAIST 23 HIPS 34 SHOE 8 1/2



*Abito di sera GUCCI.  
Nella pagina  
precedente: A sinistra,  
Casaliga di cashmere  
e cotone con bottoni  
giocoso e cappuccio  
ricamato di paillettes;  
top in jersey, pantaloni  
di lana, cullana in  
metallic e pelle e  
décolleté di pelle e pro-  
genio. A destra, Abito  
in voile di cotone con  
collo ricamato di  
paillettes e strass.  
Tunica in tulle di seta  
integramente ricamata  
con paillettes e strass e  
collane in metallo, pelle  
e strass. Tutto  
CHANEL. Sabot in  
pelle di visello con  
gioielli JIMMY  
CHOO / JEAN  
PAUL GAULTIER.*



*Trench di latex, cappello  
Tique, guanti e scarpe  
di pelle ALAÏA.  
Sulla cintura, Orologio  
Bulgari Serpenti  
Tabogas in oro rosa con  
diamanti sulla lunetta,  
quadrante bianco,  
cristallo in oro rosa  
incastonate con una  
rubellite cabochon  
BULGARI.*

# LIYA KEBEDE

HEIGHT 5'10 1/2 HAIR DARK BROWN EYES BROWN BUST 32 WAIST 23 HIPS 34 SHOE 8 1/2



Page 103: Liya wears jacket and shorts by Saint Laurent, socks by Rasta Fairies, shoes by Maison Margiela. Race wears pullover by Sandro, shorts by Fred of London, socks by Rasta Fairies and shoes by John Lobb



Liya wears dress by Paco Rabanne. Opposite: Liya wears top and skirt by Mis Mis, bangles by Nita, earrings by Pebble, socks by Rasta Fairies and shoes by Maison Margiela. Page 106: Liya wears hood, blazer, shirt and trousers by Balmain, socks by Rasta Fairies and shoes by Maison Margiela. Race wears blazer and trousers by Wales Bonner, pullover by Sandro, socks by Rasta Fairies and shoes by John Lobb.



Liya wears blazer by Alexander McQueen. Opposite: Liya wears T-shirt by Ash3000, dress by David Koma, socks by Rasta Fairies and shoes by Maison Margiela

105

94

# LIYA KEBEDE

HEIGHT 5'10 1/2 HAIR DARK BROWN EYES BROWN BUST 32 WAIST 23 HIPS 34 SHOE 8 1/2



## LIYA KEBEDE

HEIGHT 5'10 1/2 HAIR *DARK BROWN* EYES *BROWN* BUST 32 WAIST 23 HIPS 34 SHOE 8 1/2





# LIYA KEBEDE

HEIGHT 5'10 1/2 HAIR DARK BROWN EYES BROWN BUST 32 WAIST 23 HIPS 34 SHOE 8 1/2



지난 일렉션부터 꾸준히 선보이는 올타에 톤 드레스. 현대적이면서 미니멀한 이 색다른 실루엣은 브랜드의 시그니처가 됐다.

# LIYA KEBEDE

HEIGHT 5'10 1/2 HAIR *DARK BROWN* EYES *BROWN* BUST 32 WAIST 23 HIPS 34 SHOE 8 1/2





Previous page:  
 swimsuit by  
 Lemlem, \$250;  
 earrings, \$550,  
 and bangles, from  
 a selection, all by  
 Jennifer Fisher.  
 This page: top by  
 Abyssa, \$250; bottoms  
 by Now...Then, \$75;  
 bangles (on right arm)  
 by Soko, \$105 for  
 a set of five; earrings,  
 \$550, and bangles  
 (on left arm), from  
 a selection, all  
 by Jennifer Fisher.



# PORTER

powered by  
NET-A-PORTER

Summer Escape 2019  
Issue 33

**SUMMER  
LUXE  
FASHION**  
 Sexy swimwear  
 Bold bangles  
 Sultry after-dark  
 dressing

Liya  
Kebede  
Model on  
a mission

How to get  
(and keep) that  
**BEACH  
GODDESS  
GLOW**

Pamela  
Anderson  
*Don't call  
her babe!*

feel the  
**HEAT**

PLUS Vivienne Westwood, Diane Kruger, Stella McCartney, Elaine Welteroth,  
 Alek Wek, Gemma Ward, Marina Abramovic, Gabriela Hearst, Ellen Page...

## LIYA KEBEDE

HEIGHT 5'10 1/2 HAIR DARK BROWN EYES BROWN BUST 32 WAIST 23 HIPS 34 SHOE 8 1/2



**THIS OLD THING**

How did granny details suddenly become so compelling? Who thought we'd all be craving lace-antimacassar chic? With fresh eyes, old tropes come to life. Alberta Ferretti mohair blouse (\$990) and skirt (\$1,490); Alberta Ferretti, Los Angeles.



# LIYA KEBEDE

HEIGHT 5'10 1/2 HAIR *DARK BROWN* EYES *BROWN* BUST 32 WAIST 23 HIPS 34 SHOE 8 1/2





"We're always changing and growing. Sometimes you get closer to finding the essence of who you are; sometimes you get further away. And sometimes you have to stop seeking and do what you can."  
—LIYA KEBEDE, 40

**SKIN IN THE GAME**  
Kebede wears a Salvatore Ferragamo blouse (\$4,300) and skirt; Salvatore Ferragamo stores. Burkindy bracelet. JW Anderson boots.



# LIYA KEBEDE

HEIGHT 5'10 1/2 HAIR DARK BROWN EYES BROWN BUST 32 WAIST 23 HIPS 34 SHOE 8 1/2



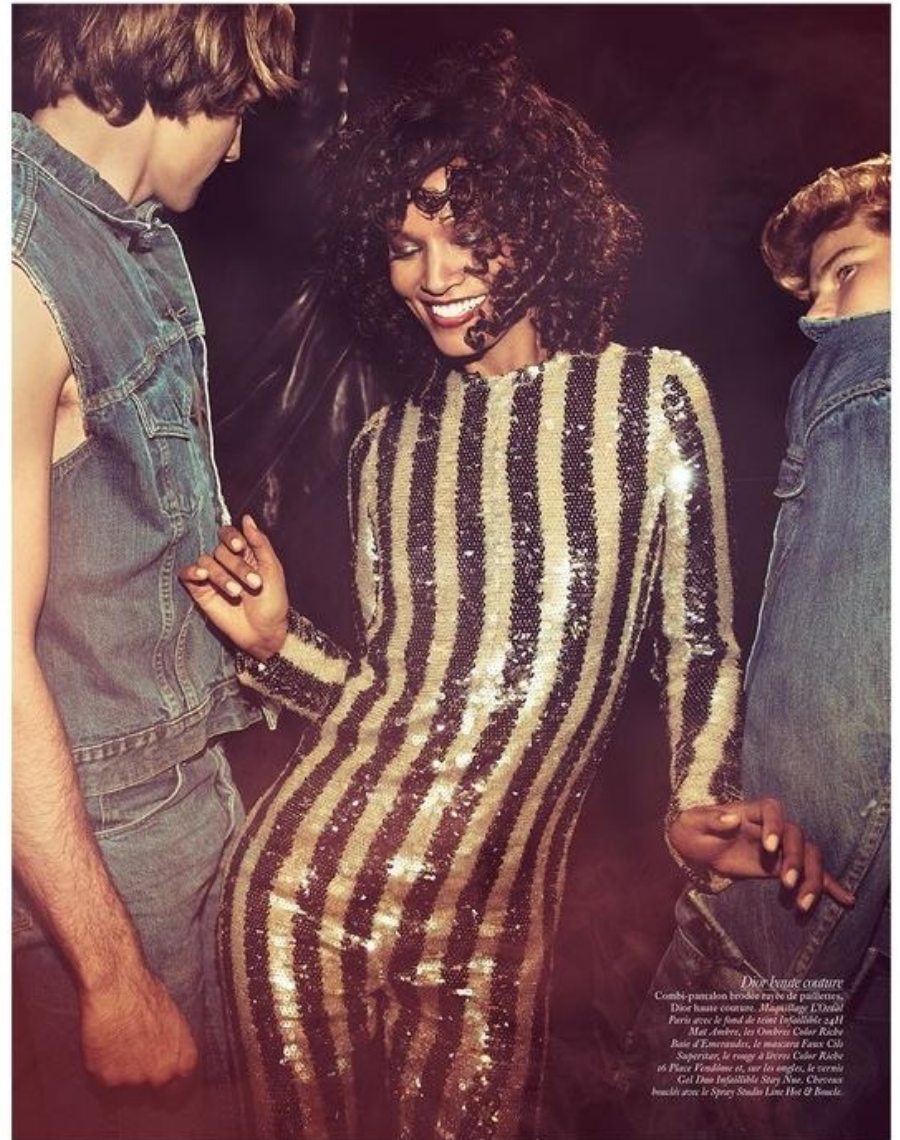
# LIYA KEBEDE

HEIGHT 5'10 1/2 HAIR *DARK BROWN* EYES *BROWN* BUST 32 WAIST 23 HIPS 34 SHOE 8 1/2





Body suit en jacquard de laine multicolore et  
boites en vinyle noir, Dior Haute Couture.  
Maquillage L'Oréal Paris avec le fond de teint  
Infaillible 24H Mat Amber, le blush Accord  
Parfait Neutros, le blush Color Rich  
Midnight Black, le mascara Faux Cils Superstar,  
le rouge à lèvres Color Rich Corama Saint  
Germain et, sur les ongles, le vernis Gel  
Duo Infaillible Stay N'Go, finitions résineuse  
Tulle Collins et Menn Latté.



*Dior Haute Couture*  
Combi-pantalon broché rayé de pailettes,  
Dior haute couture, Maquillage L'Oréal  
Paris avec le fond de teint Infaillible 24H  
Mat Amber, le blush Color Rich  
Baie d'Encens, le mascara Faux Cils  
Superstar, le rouge à lèvres Color Rich  
et Flair Vendôme et, sur les ongles, le vernis  
Gel Duo Infaillible Stay N'Go, Cheveux  
brushés avec le Spray Studio Line Hot & Bound.

# LIYA KEBEDE

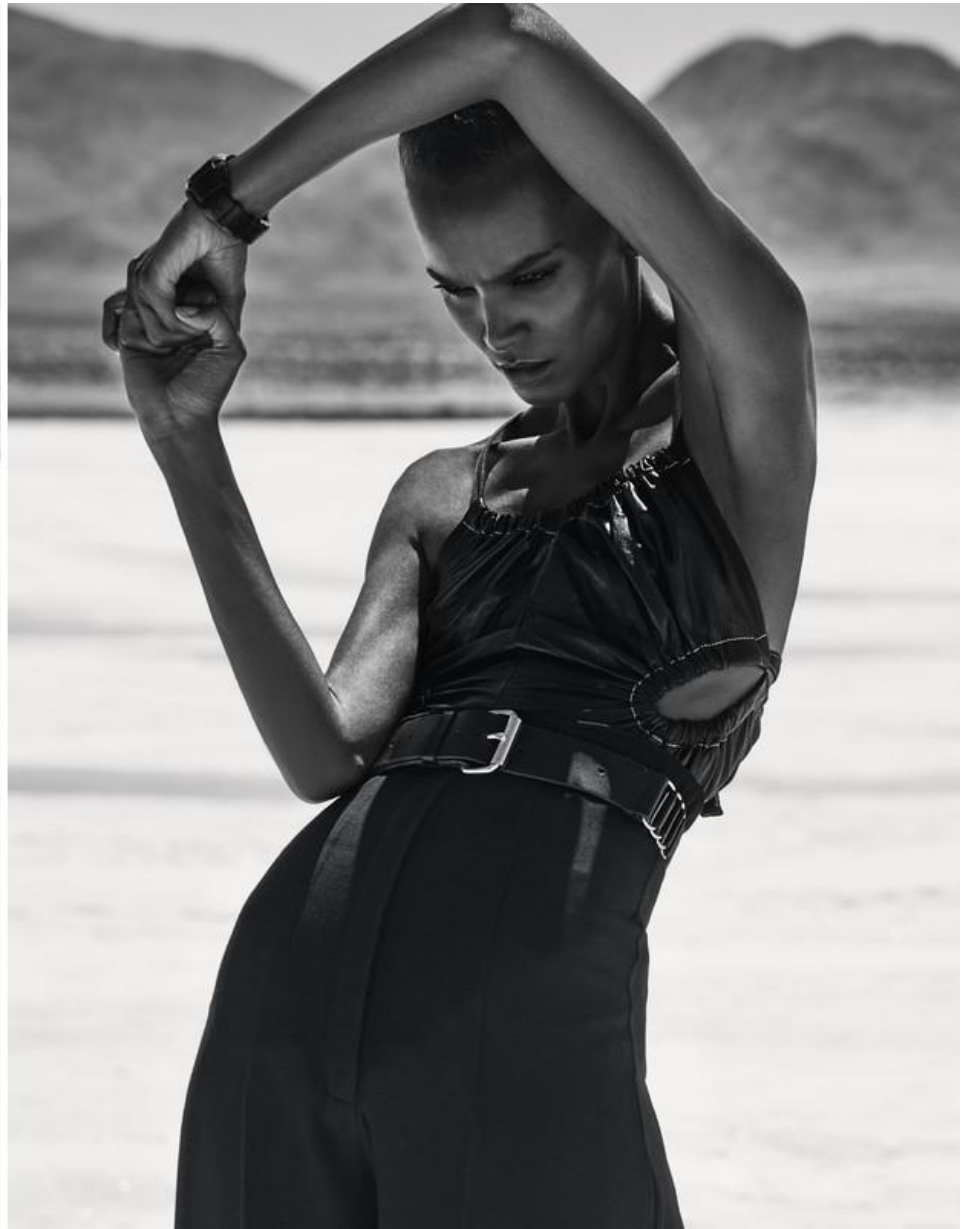
HEIGHT 5'10 1/2 HAIR DARK BROWN EYES BROWN BUST 32 WAIST 23 HIPS 34 SHOE 8 1/2



# LIYA KEBEDE

HEIGHT 5'10 1/2 HAIR *DARK BROWN* EYES *BROWN* BUST 32 WAIST 23 HIPS 34 SHOE 8 1/2



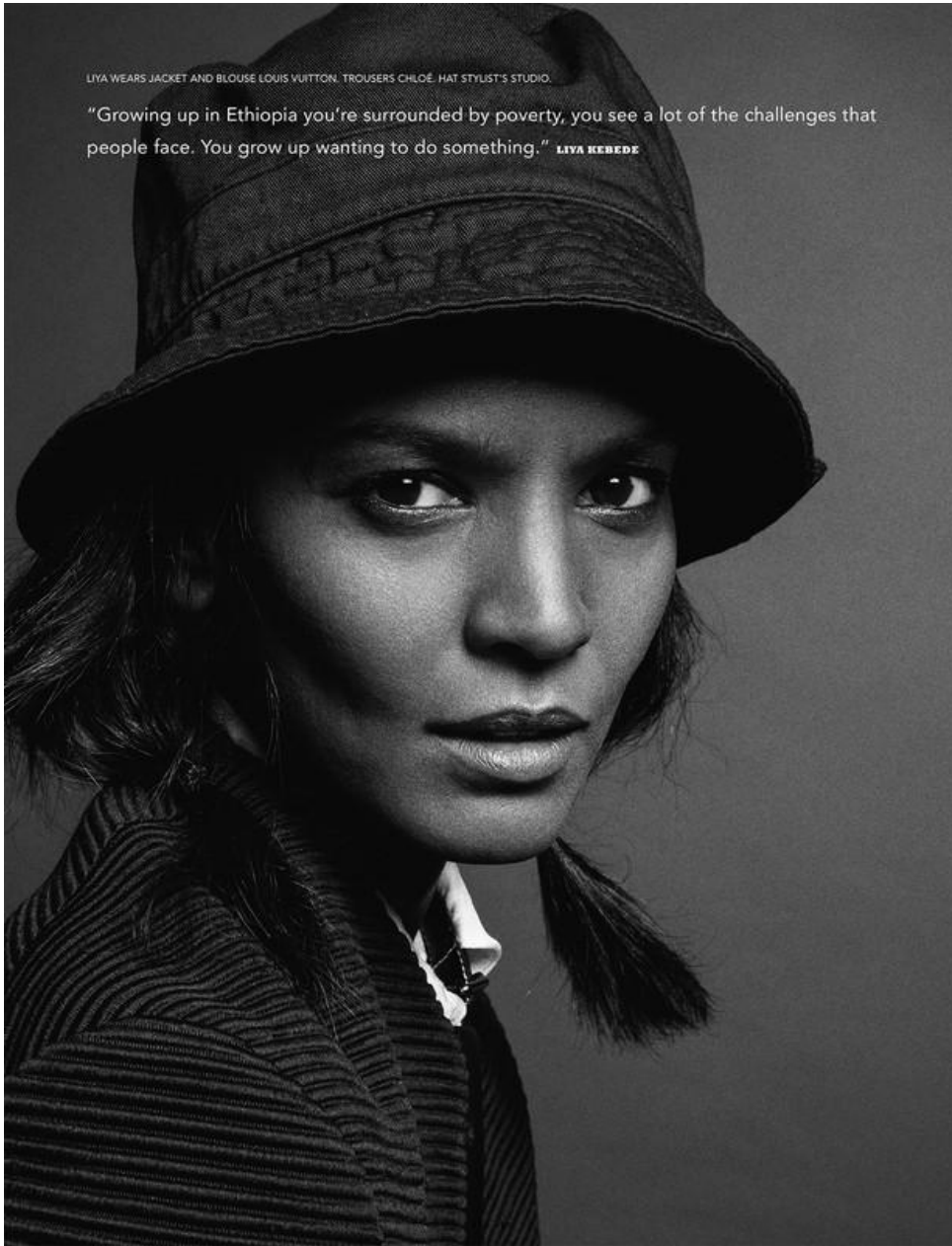


# LIYA KEBEDE

HEIGHT 5'10 1/2 HAIR *DARK BROWN* EYES *BROWN* BUST 32 WAIST 23 HIPS 34 SHOE 8 1/2

LIYA WEARS JACKET AND BLOUSE LOUIS VUITTON. TROUSERS CHLOÉ. HAT STYLIST'S STUDIO.

"Growing up in Ethiopia you're surrounded by poverty, you see a lot of the challenges that people face. You grow up wanting to do something." **LIYA KEBEDE**



LIYA KEBEDE, 37, ETHIOPIA

# LIYA KEBEDE

HEIGHT 5'10 1/2 HAIR *DARK BROWN* EYES *BROWN* BUST 32 WAIST 23 HIPS 34 SHOE 8 1/2



# Now and Forever

From corsetry and embroidery to the fineness of tailoring this season's most beguiling silhouettes offer a palpable sense of history and craft.

Liya Kebede and her children connect the dots between past, present, and future. Photographed by Tyler Mitchell.

**THREE'S COMPANY**  
FROM LEFT: Model Liya Kebede wears a **Christopher John Rogers** dress ([net-a-porter.com](http://net-a-porter.com)). Her daughter, Rae, wears a **Coach** top ([coach.com](http://coach.com) for similar styles) and **Khaite** shoes ([khaite.com](http://khaite.com)). Her son, Suhul, wears a **Wales Bonner** jacket ([walesbonner.net](http://walesbonner.net)) and **Michael Kors Collection** trousers ([michaelkors.com](http://michaelkors.com)).  
Fashion Editor: Camilla Nickerson.



## LIYA KEBEDE

HEIGHT 5'10 1/2 HAIR DARK BROWN EYES BROWN BUST 32 WAIST 23 HIPS 34 SHOE 8 1/2





## LIYA KEBEDE

HEIGHT 5'10 1/2 HAIR DARK BROWN EYES BROWN BUST 32 WAIST 23 HIPS 34 SHOE 8 1/2



DOCUMENT



THE LAST  
MAGAZINE

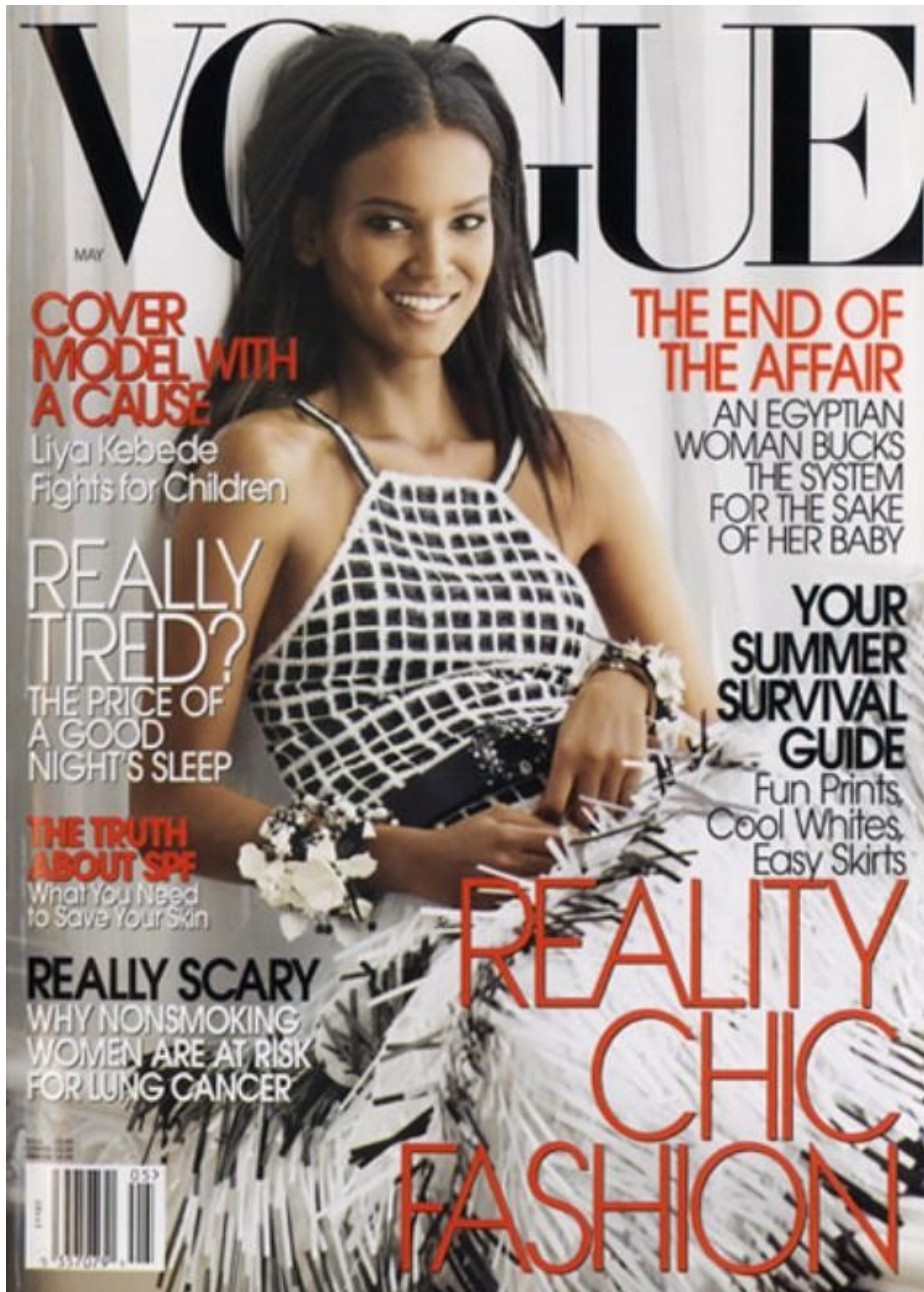
ISSUE #11 SPRING 2015



## LIYA KEBEDE

HEIGHT 5'10 1/2 HAIR DARK BROWN EYES BROWN BUST 32 WAIST 23 HIPS 34 SHOE 8 1/2





## LIYA KEBEDE

HEIGHT 5'10 1/2 HAIR DARK BROWN EYES BROWN BUST 32 WAIST 23 HIPS 34 SHOE 8 1/2



1.0 SPRING 2018

IDEAS

IDEAS. FASHION. MUSIC. PEOPLE.

IF YOU ASK ME WHAT I WANT, I'LL TELL YOU. I WANT EVERYTHING.

THE RADICAL ISSUE NO. 351



NO. 351 THE RADICAL ISSUE SPRING 2018 LIYA KEBEDE PHOTOGRAPHY INEZ & VINOOB



# LIYA KEBEDE

HEIGHT 5'10 1/2 HAIR DARK BROWN EYES BROWN BUST 32 WAIST 23 HIPS 34 SHOE 8 1/2



# LIYA KEBEDE

HEIGHT 5'10 1/2 HAIR DARK BROWN EYES BROWN BUST 32 WAIST 23 HIPS 34 SHOE 8 1/2





**ON THE TURN**  
 Liya makes like a modern Gibson girl—cinched waist, long skirt, a head of wondrously voluminous hair—in her Simone Rocha sweater, corset, and skirt (simone-rocha.com). OPPOSITE: Suhul wears an H&M shirt (hm.com) and Dickies pants (dickies.com). Raee wears a Brooks Brothers shirt (brooksbrothers.com).

110



**HOLIDAY**

INTERNATIONAL TRAVEL AND STYLE REVIEW

**PARIS**  
 n° 392



**LIYA KEBEDE**

HEIGHT 5'10 1/2 HAIR DARK BROWN EYES BROWN BUST 32 WAIST 23 HIPS 34 SHOE 8 1/2