

HEIGHT *5'9 1/2*
HAIR *GREY*
EYES *BLUE/GREEN*
BUST *34*
WAIST *24*
HIPS *36*
SHOE *9*

dna
MODEL MANAGEMENT LLC

555 WEST 25TH ST, 6TH FL NEW YORK, NY 10001 TEL. 212.226.0080 FAX 212.226.7711 dnamodels.com



A CONSTELLATION OF STARS

Carol Woolton celebrates haute
jewellery's most iconic – and sparkling
– designs. Photographs by Ben Toms.
Styling by Poppy Kain

MARIE SOPHIE



Location: Paris 5

Clear Signals

Coat: Sacai
Bag: Carven

Photographer: David Paige
Model: Marie Sophie @ Supreme Paris
Stylist: Gemma Bedini

MARIE SOPHIE

HEIGHT 5'9 1/2 HAIR GREY EYES BLUE/GREEN BUST 34 WAIST 24 HIPS 36 SHOE 9



MARIE SOPHIE

HEIGHT 5'9 1/2 HAIR GREY EYES BLUE/GREEN BUST 34 WAIST 24 HIPS 36 SHOE 9



Agnes: casaco em brocado de seda e lurex, € 1.350, e saia em brocado de seda e lurex, € 450, ambos **LUTZ HUELLE**. Marie Sophie: casaco em seda, € 1.580 e camisa em algodão, € 199, ambos **LUTZ HUELLE**. Na página ao lado, Marie Sophie: casaco em pele, € 1.310. **DROME**. Sapatos em pele com pelo, **MIU MIU**.

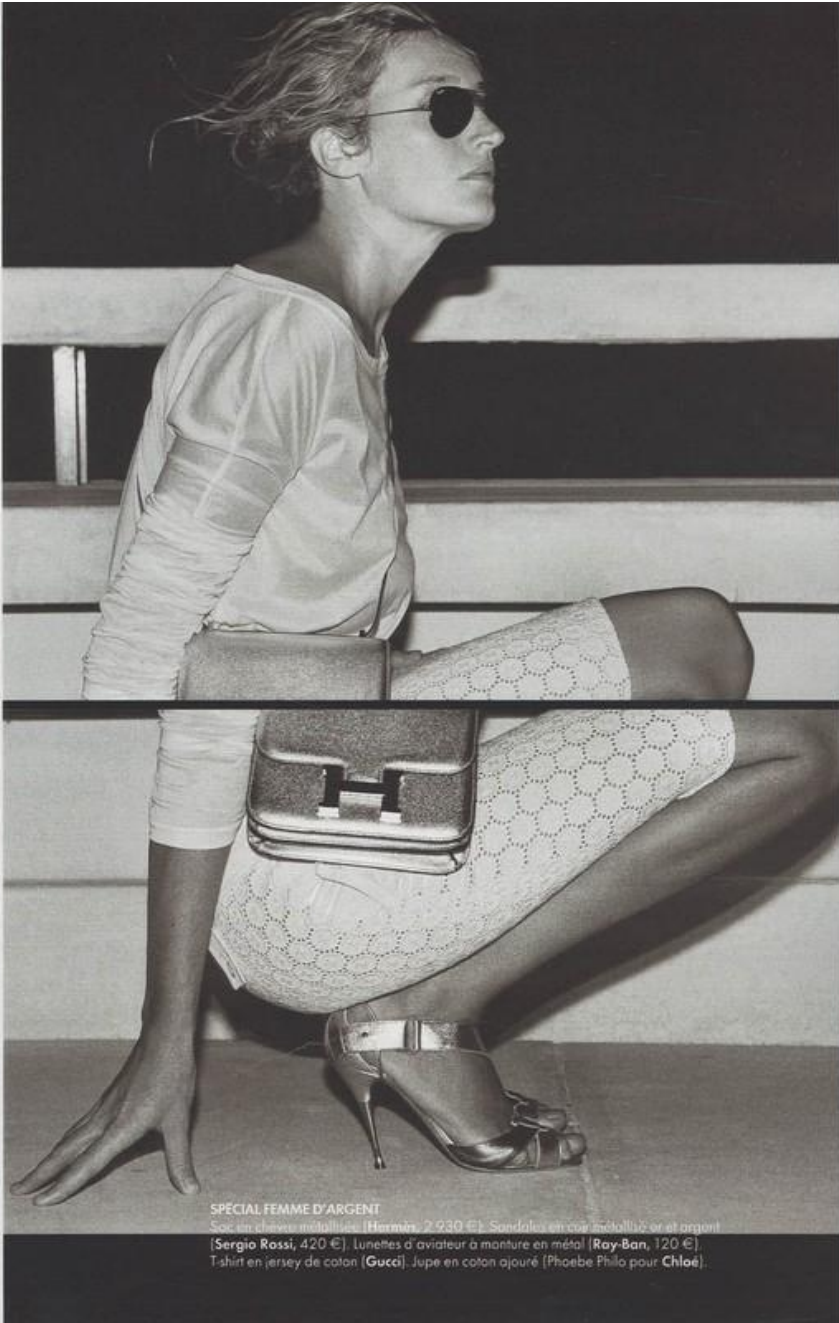
MARIE SOPHIE

HEIGHT 5'9 1/2 HAIR GREY EYES BLUE/GREEN BUST 34 WAIST 24 HIPS 36 SHOE 9

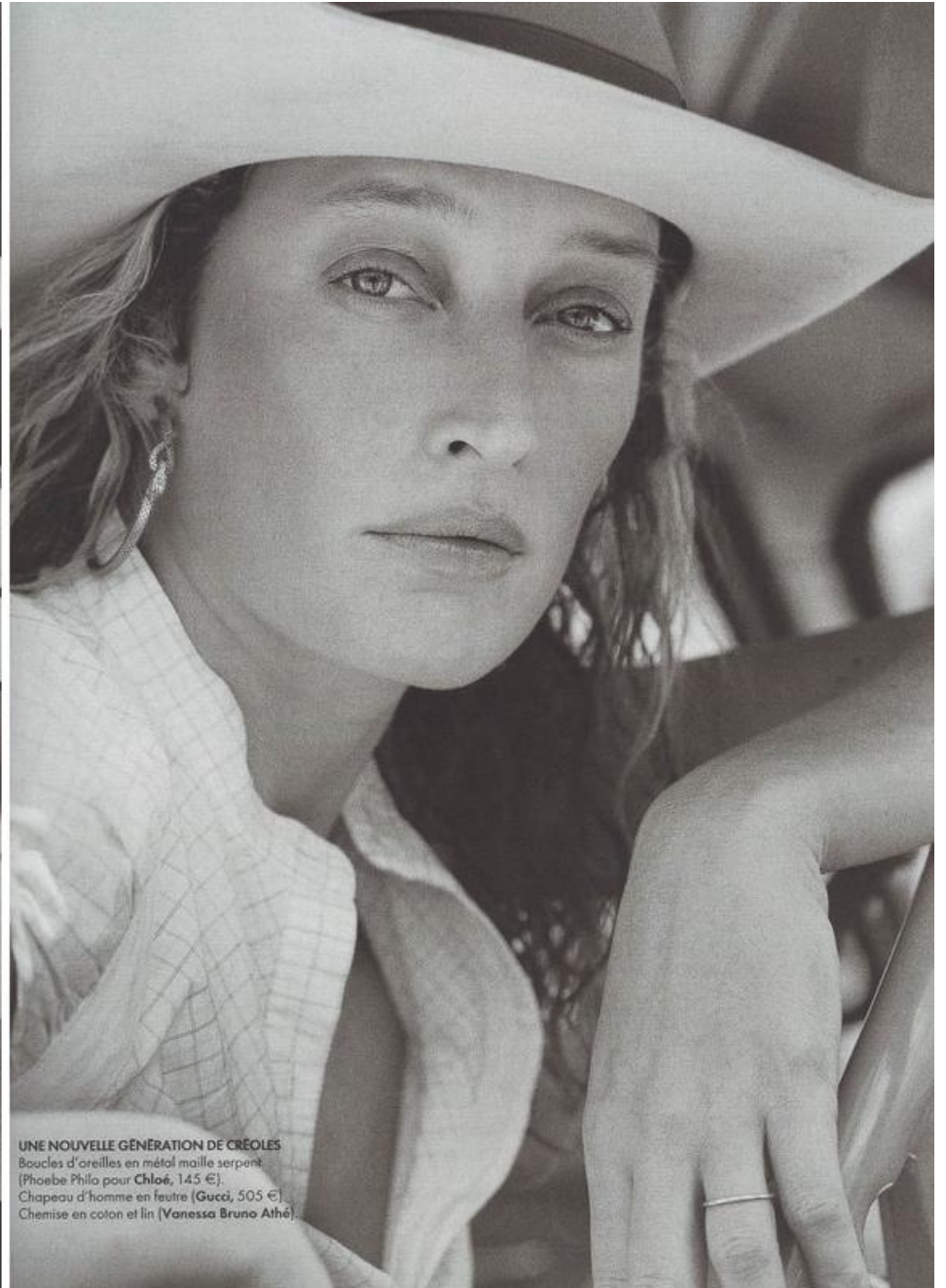


MARIE SOPHIE

HEIGHT 5'9 1/2 HAIR GREY EYES BLUE/GREEN BUST 34 WAIST 24 HIPS 36 SHOE 9



SPECIAL FEMME D'ARGENT
 Sac en chevreau métallisé (Hermès, 2 930 €). Sandales en cuir métallisé or et argent
 (Sergio Rossi, 420 €). Lunettes d'aviateur à monture en métal (Ray-Ban, 120 €).
 T-shirt en jersey de coton (Gucci). Jupe en coton ajouré (Phoebe Philo pour Chloé).



UNE NOUVELLE GÉNÉRATION DE CRÉOLES
 Boucles d'oreilles en métal maille serpent
 (Phoebe Philo pour Chloé, 145 €).
 Chapeau d'homme en feutre (Gucci, 505 €).
 Chemise en coton et lin (Vanessa Bruno Athé).

MARIE SOPHIE

HEIGHT 5'9 1/2 HAIR GREY EYES BLUE/GREEN BUST 34 WAIST 24 HIPS 36 SHOE 9

HELMUT LANG

OPTICAL FRAMES AND SUNGLASSES

Featuring form that follows function, the frames have been designed with strict attention to proportion and focus on different dimensions to fit individual facial types. The modern classics offered in this collection are made with the absence of decoration to promote an intellectual and fearless appearance. Seemingly effortless style to maintain identity. Protected but beautiful.



HELMUT LANG N.Y.C.
62 G2 N 99
#158 705

MARIE SOPHIE New York, N.Y. 5'5 1/2"



MARIE SOPHIE New York, N.Y. 5'5 1/2"

HELMUT LANG

optical frames and sunglasses

#21-0005 Frame in Titanium with Nickel free plating/silver available in silver and gold size 53. UV protection lens colors brown and green grey.

© HELMUT LANG

MARIE SOPHIE

HEIGHT 5'9 1/2 HAIR GREY EYES BLUE/GREEN BUST 34 WAIST 24 HIPS 36 SHOE 9

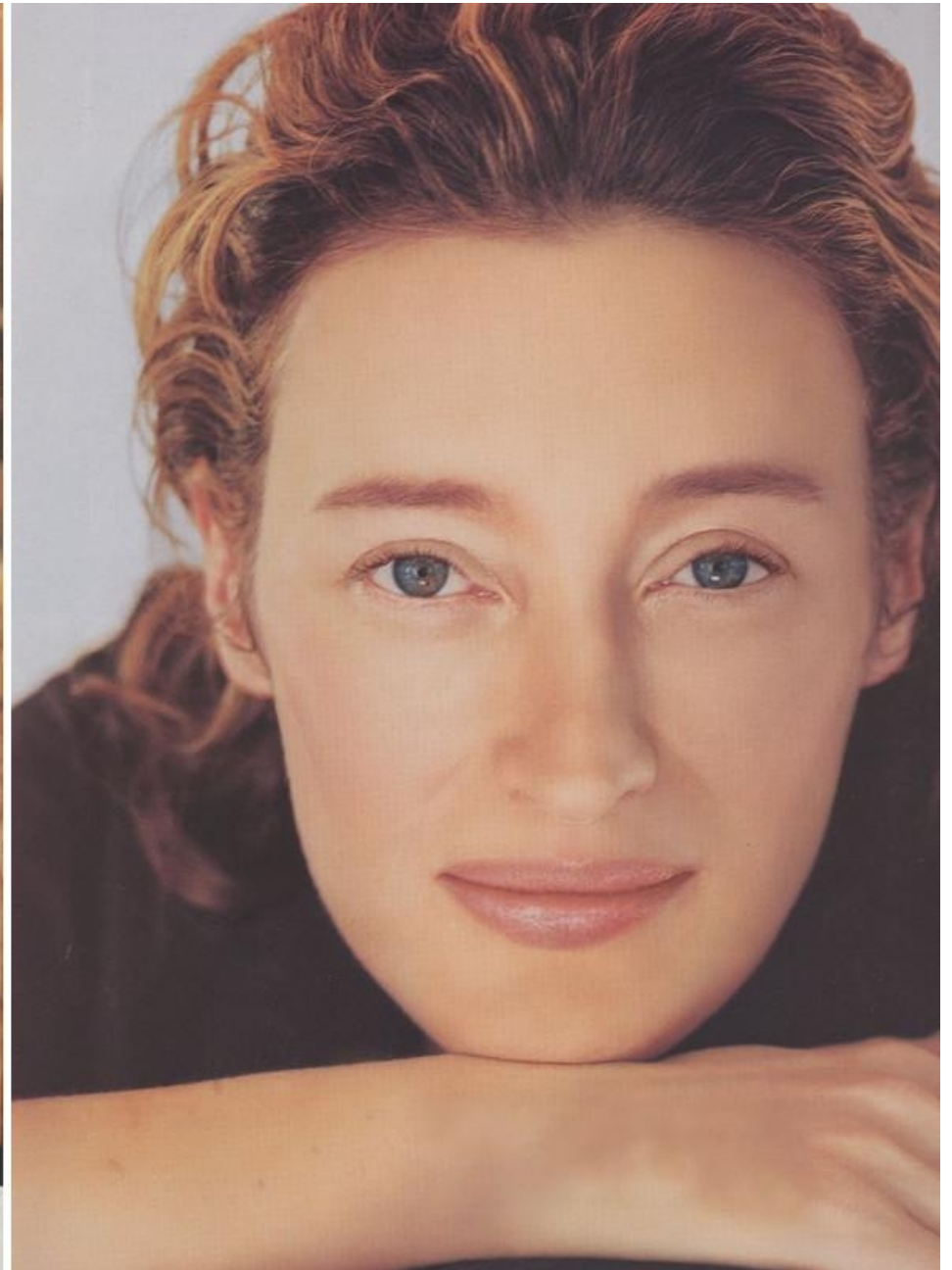


MARIE SOPHIE

HEIGHT 5'9 1/2 HAIR GREY EYES BLUE/GREEN BUST 34 WAIST 24 HIPS 36 SHOE 9



SHIRT AUS SATINSTRETCH (CA. 160
MARK), VON MARC CAIN. CAPRIHOSE (CA.
1070 MARK) VON COSTUME NATIONAL.
MULES: DRIES VAN NOTEN.
RECHTS: TOP (CA. 150 MARK) VON DIBARI.
DOPPELAGIGER TULLROCK (CA. 1800
MARK) VON LAWRENCE STEELE



MARIE SOPHIE

HEIGHT 5'9 1/2 HAIR GREY EYES BLUE/GREEN BUST 34 WAIST 24 HIPS 36 SHOE 9



MARIE SOPHIE

HEIGHT 5'9 1/2 HAIR GREY EYES BLUE/GREEN BUST 34 WAIST 24 HIPS 36 SHOE 9



MARIE SOPHIE

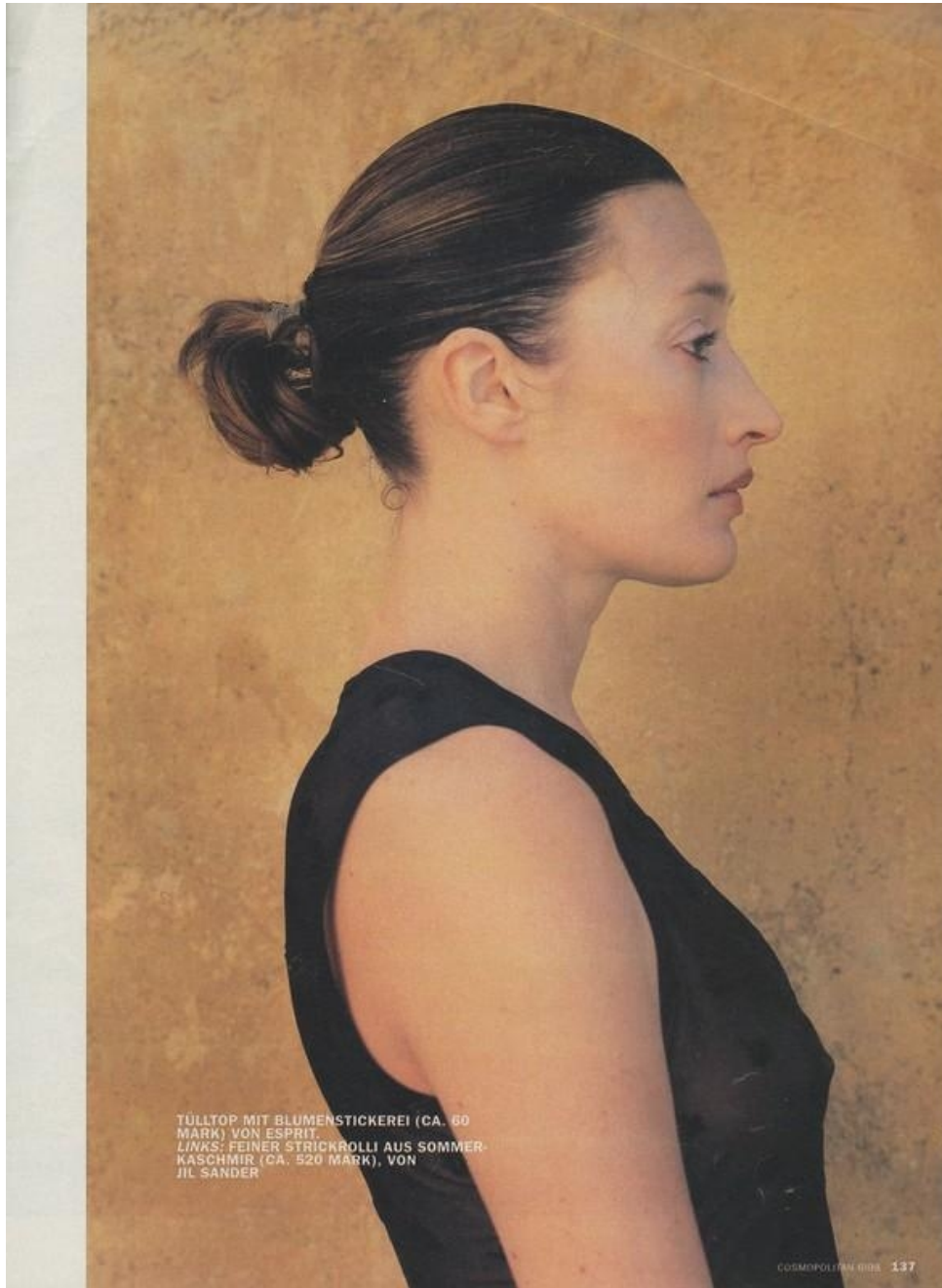
HEIGHT 5'9 1/2 HAIR GREY EYES BLUE/GREEN BUST 34 WAIST 24 HIPS 36 SHOE 9



Abito lungo di raso
con scollo a
salopette, Givenchy.
Nella pagina
accanto, E, tagliato
in shicco
l'abito sottoveste
ricoperto di paillettes
donate, Ralph
Lauren Collection;
cappotto
doppiopetto con
maniche a
sbuffo, Comme des
Garçons.

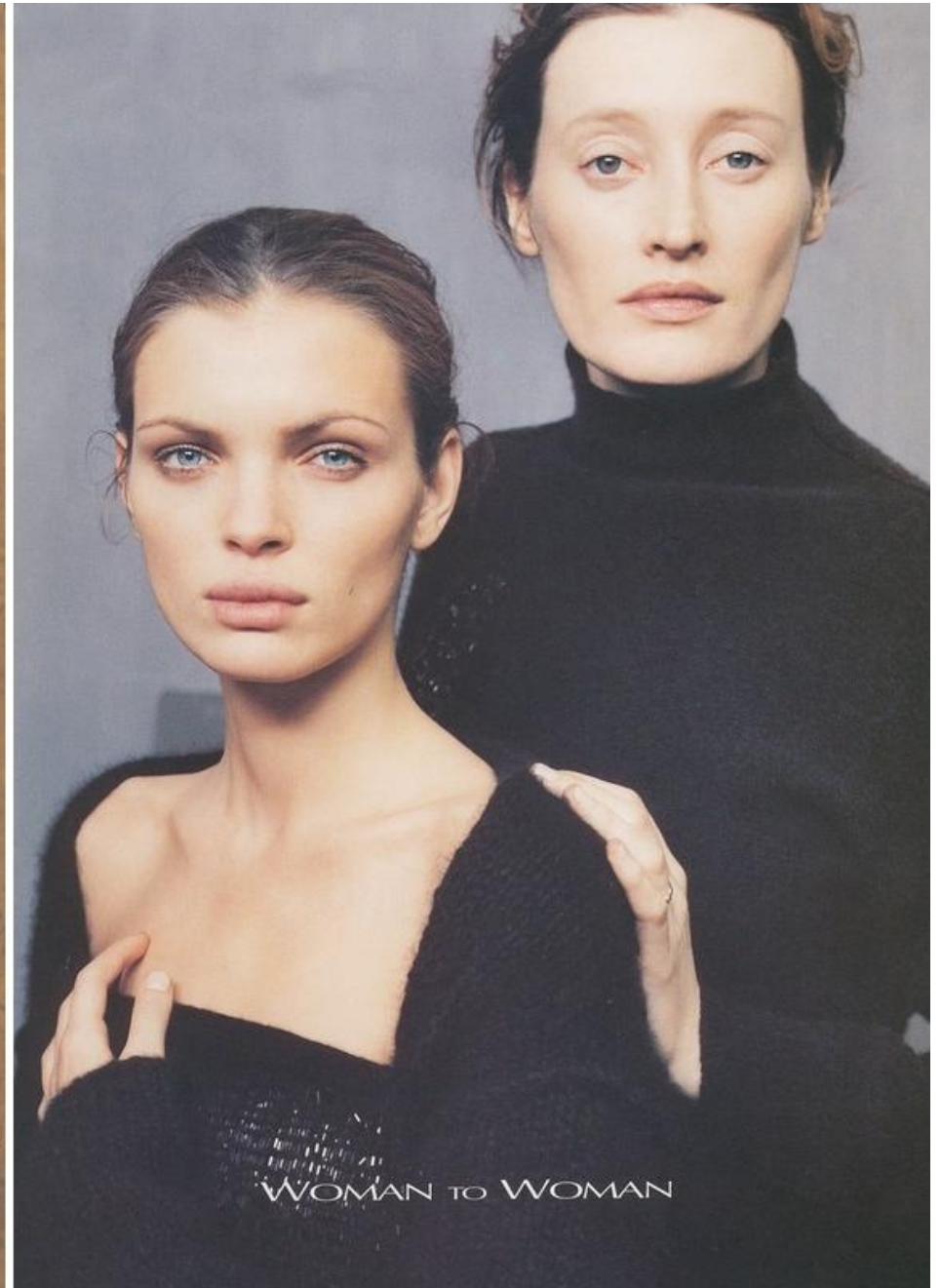
MARIE SOPHIE

HEIGHT 5'9 1/2 HAIR GREY EYES BLUE/GREEN BUST 34 WAIST 24 HIPS 36 SHOE 9



TÜLLTOP MIT BLUMENSTICKEREI (CA. 60 MARK) VON ESPRIT.
LINKS: FEINER STRICKROLLI AUS SOMMERKASCHMIR (CA. 520 MARK), VON JIL SANDER

COSMOPOLITAN GIRLS 137



WOMAN TO WOMAN

MARIE SOPHIE

HEIGHT 5'9 1/2 HAIR GREY EYES BLUE/GREEN BUST 34 WAIST 24 HIPS 36 SHOE 9



DIESE SEITE: Bluse von **Stefanel**, Preis auf Anfrage. Weiße Bügelfaltenhose von **The Row**, Preis auf Anfrage. Armreif: **Cornelia Webb**.
RECHTE SEITE: Weißer kragenloser Blazer aus Viskosegemisch, von **Marc Cain**, um 280 Euro. Weiße kurzärmelige Bluse aus Polyester, von **H&M**, um 30 Euro. Khakifarbener bodenlanger Plisseeock aus Seidengeorgette, von **Schumacher**, um 400 Euro. Ring: **Niessing**. Armreife: **Chaingang**

330 ELLE



MARIE SOPHIE

HEIGHT 5'9 1/2 HAIR GREY EYES BLUE/GREEN BUST 34 WAIST 24 HIPS 36 SHOE 9



334 ELLE



ELLE 333

MARIE SOPHIE

HEIGHT 5'9 1/2 HAIR GREY EYES BLUE/GREEN BUST 34 WAIST 24 HIPS 36 SHOE 9



DIESE SEITE: Sandfarbene Bluse aus Rentierleder, von **Fabiana Filippi**, um 410 Euro.

RECHTE SEITE: Ärmelloser Blazer aus Wolle-Mohair-Gemisch, von **Christophe Lemaire**, um 475 Euro. Nachtblaue Seidenbluse von **Windsor**, um 280 Euro. Nachtblaue Bügelfaltenhose aus Viskose, von **Lacoste**, um 215 Euro. Armreife: Cornelia Webb

332 ELLE

MARIE SOPHIE

HEIGHT 5'9 1/2 HAIR GREY EYES BLUE/GREEN BUST 34 WAIST 24 HIPS 36 SHOE 9