

HEIGHT *5'10*
HAIR *BLONDE*
EYES *BLUE*
BUST *37*
WAIST *27*
HIPS *37*
SHOE *11*

dna
MODEL MANAGEMENT LLC

555 WEST 25TH ST, 6TH FL NEW YORK, NY 10001 TEL. 212.226.0080 FAX 212.226.7711 dnamodels.com

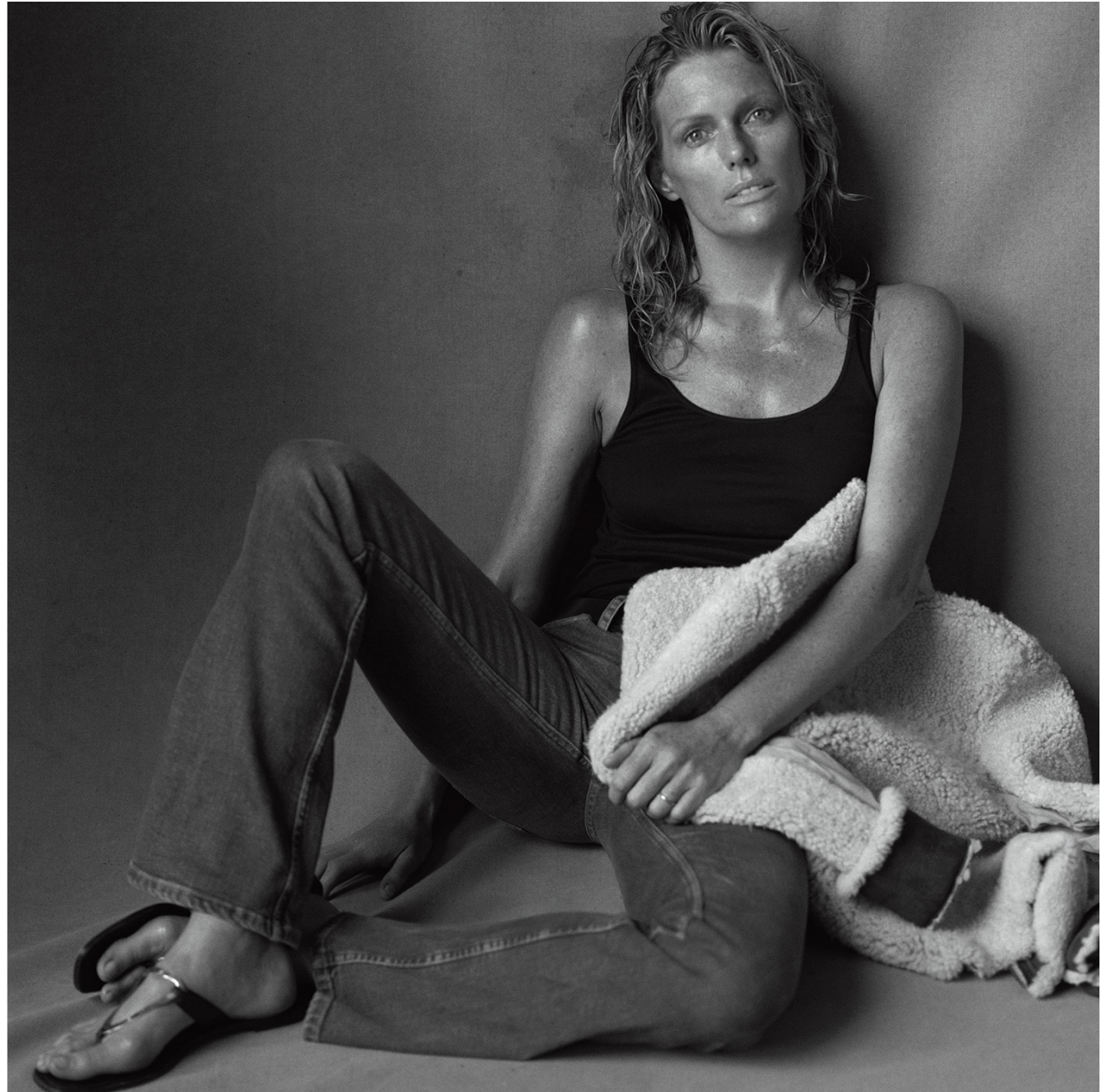


PATTI HANSEN



PATTI HANSEN

HEIGHT 5'10 HAIR *BLONDE* EYES *BLUE* BUST 37 WAIST 27 HIPS 37 SHOE 11

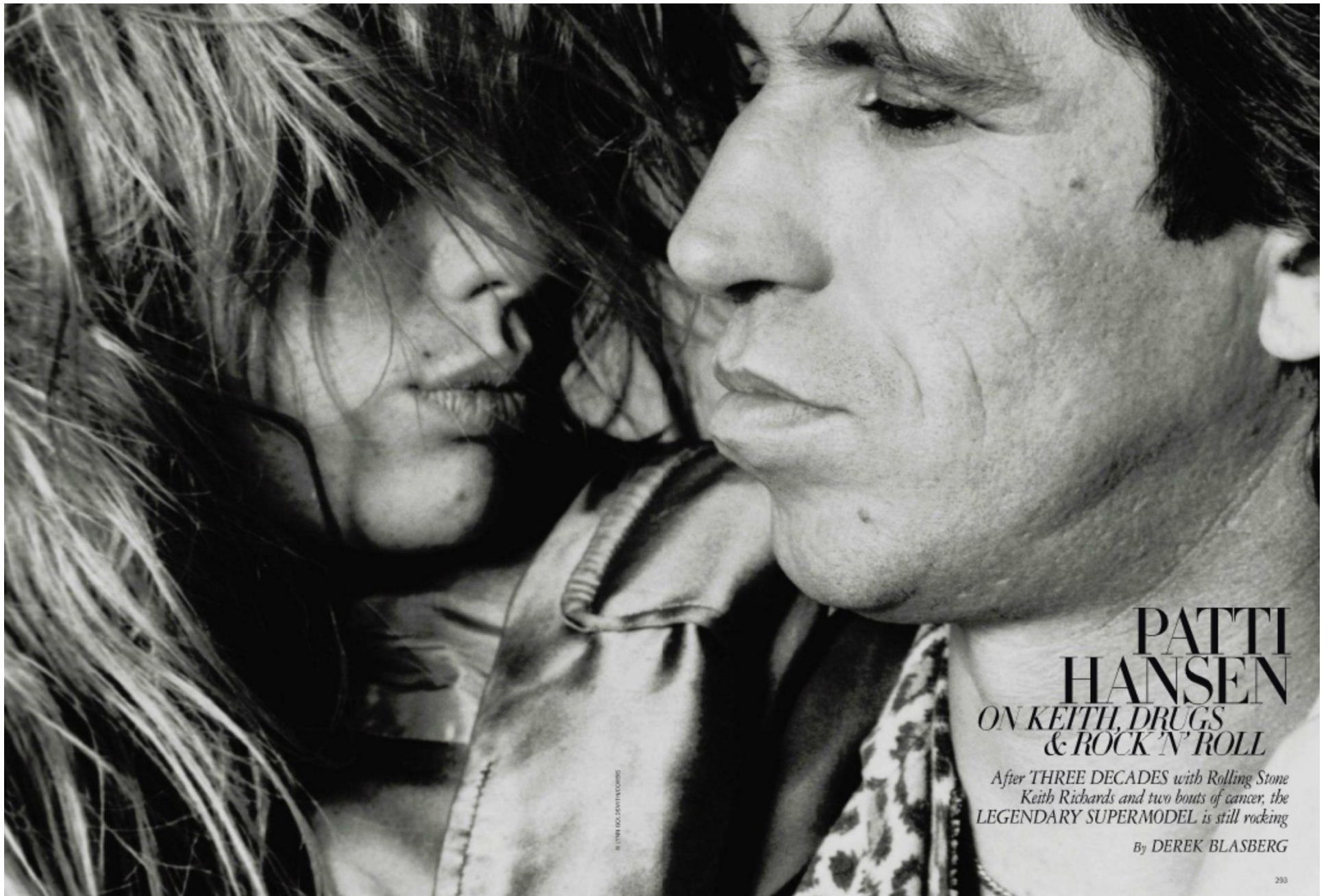


PREVIOUS PAGES
Steven Meisel, *Vogue*, August 2004.
RIGHT
Steven Meisel, *Vogue*, August 2010.
FOLLOWING PAGES
Hansen at home.
Annie Leibovitz, *Vogue*, August 2010.

222

PATTI HANSEN

HEIGHT 5'10 HAIR *BLONDE* EYES *BLUE* BUST 37 WAIST 27 HIPS 37 SHOE 11



**PATTI
HANSEN**
*ON KEITH, DRUGS
& ROCK 'N' ROLL*

*After THREE DECADES with Rolling Stone
Keith Richards and two bouts of cancer, the
LEGENDARY SUPERMODEL is still rocking*

By DEREK BLASBERG

© 1994 ROL. PARTI RECORDS

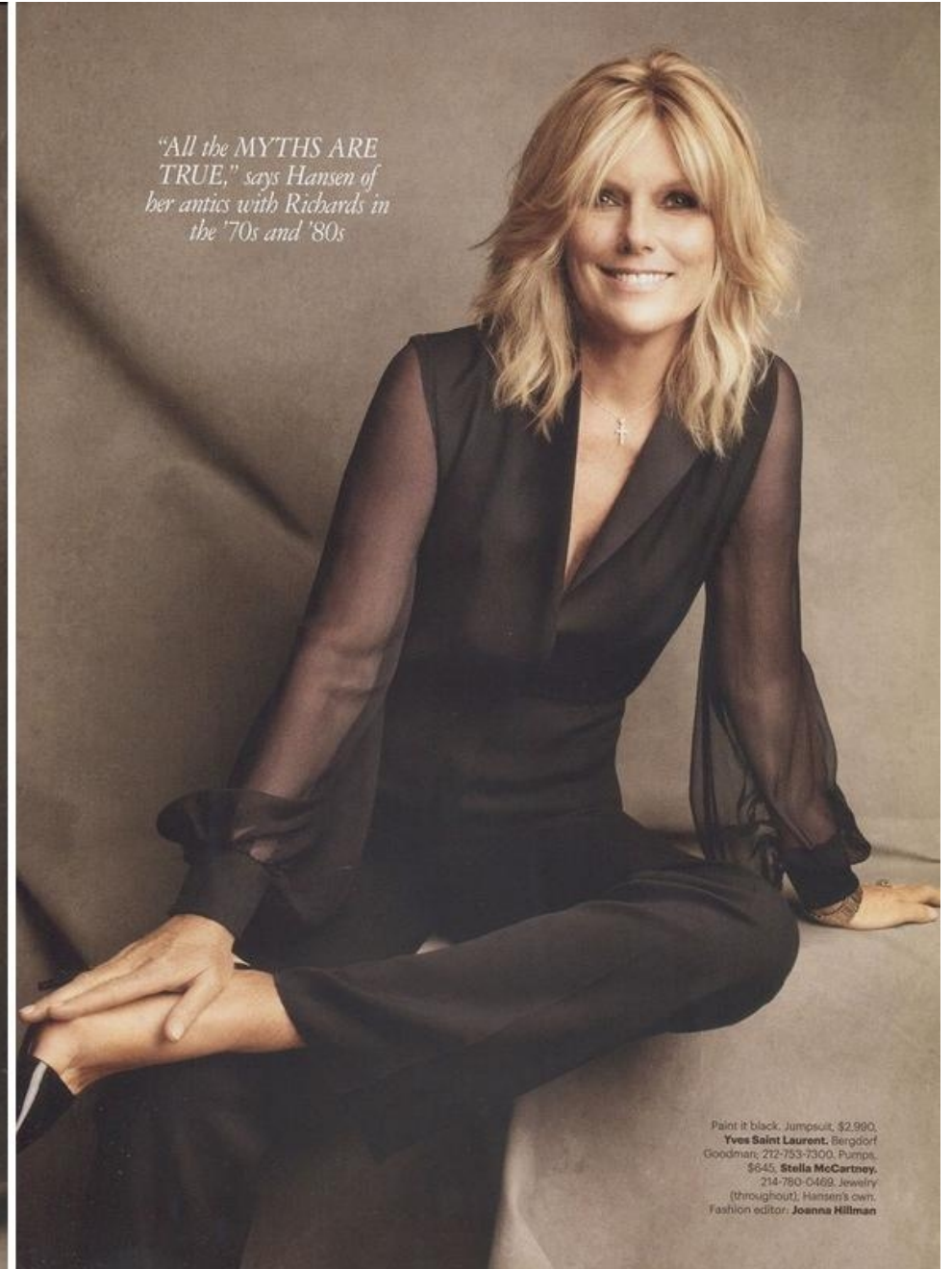
283

PATTI HANSEN

HEIGHT 5'10 HAIR *BLONDE* EYES *BLUE* BUST 37 WAIST 27 HIPS 37 SHOE 11



Hansen's still white-hot. Jacket, \$2,375, and pants, \$1,490, **Yves Saint Laurent**. Bergdorf Goodman; 212-753-7300. Shirt, \$75, **Vince**. barneys.com. Shoes, \$495, **Alexander Wang**. alexanderwang.com. Cartier watch; Hansen's own. Hair: Juan Carlos Maciqueus for Rita Hezzen Salon; makeup: Francelle for Nars Cosmetics; manicure: Kiyo Okada at Garren New York for Chanel.



"All the MYTHS ARE TRUE," says Hansen of her antics with Richards in the '70s and '80s

Paint it black. Jumpsuit, \$2,990, **Yves Saint Laurent**. Bergdorf Goodman; 212-753-7300. Purpils, \$645, **Stella McCartney**. 214-780-0469. Jewelry (throughout); Hansen's own. Fashion editor: **Joanna Hillman**

PATTI HANSEN

HEIGHT 5'10 HAIR *BLONDE* EYES *BLUE* BUST 37 WAIST 27 HIPS 37 SHOE 11



SATISFACTION

FAR LEFT: Marital bliss. **LEFT:** Patti wears an Yves Saint Laurent chain-mail dress.

THE LIFE AQUATIC

"You come back feeling like you've actually had a vacation—rather than feeling like you need a vacation," says Lucie, right. Ella, with family, wears a Diane von Furstenberg bikini top and Louis Vuitton sunglasses.

ENSEMBLE CAST

The daily menu includes walks on the beach and afternoons spent reading, resin. Theodora, Ella, Patti, Ida, Lucie, and Alexandra—all wearing Araks pajamas. Details, see in This Issue.



SHALL WE DANCE?

"Everyone gets along so well," says Patti, in an Araks pleated chiffon-and-velvet dress. "People are always marveling that there're never arguments; everyone's really easygoing."

PATTI HANSEN

HEIGHT 5'10 HAIR *BLONDE* EYES *BLUE* BUST 37 WAIST 27 HIPS 37 SHOE 11

ANYTHING GOES

HAPPY, STYLISH CHAOS ENSUES WHENEVER KEITH RICHARDS AND PATTI HANSEN, 56, GATHER THE KIDS AND GRANDKIDS, INCLUDING 39-YEAR-OLD MODEL DAUGHTER-IN-LAW LUCIE DE LA FALAISE, AT THEIR TURKS AND CAICOS RETREAT. BY CHLOE MALLE. PHOTOGRAPHED BY BRUCE WEBER.



PHOTOGRAPHED BY BRUCE WEBER AT PARROT CAY, TURKS AND CAICOS ISLANDS

ALL IN THE FAMILY
 The Richards clan at home on Parrot Cay; counter-clockwise from far left: Marlon and wife Lucie de la Falaise; Angela, Ava, and Ella, in a Marc Jacobs top; Theodora, in a Saint James striped shirt and Marc Jacobs pants; Ida, Orson, and Alexandra; Graham Whitney and son Adam; Patti Hansen (in an Etro shirt) and Keith. Details, see In This Issue. Fashion Editor: Camilla Nickerson.

PATTI HANSEN

HEIGHT 5'10 HAIR *BLONDE* EYES *BLUE* BUST 37 WAIST 27 HIPS 37 SHOE 11



PATTI HANSEN

HEIGHT 5'10 HAIR *BLONDE* EYES *BLUE* BUST 37 WAIST 27 HIPS 37 SHOE 11



DECEMBER 1972
BY RICO PUHLMANN
(WITH KEITH GOG),
Glamour

"Back in the day, everybody hired Keith Gog to make all the girls feel happy! We became the all-American couple of that time—I totally had a crush on him, but I was 16 and he was totally respectful. When you're young, pretending to be a couple can feel so embarrassing and exploitative, but Keith always made me feel comfortable."

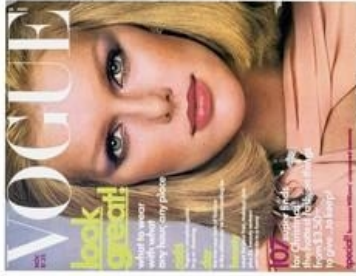
"Growing up with freckles, you're always trying to get rid of them. It wasn't until magazines started accepting my freckles that I began to love them, too. The next thing I knew, I wasn't wearing makeup. Rico Puhmann started my career. We were doing work for *Glamour* and then he just took this extra picture, which ended up on the cover of *Jungla* magazine."

DECEMBER 1973
BY RICO PUHLMANN,
Glamour



NOVEMBER 1975
BY ARTHUR ELGORT,
Vogue

"Back then, they always did cover tests, so I didn't know this was going to be my first cover of *Vogue* when I took this photo. I wasn't even nervous. Way Bandy was the makeup artist, and he really turned me into a woman. He covered my freckles for this one, and then by the next month freckles were all the rage."



AUGUST 1976
BY ARTHUR ELGORT
(WITH LISA TAYLOR
AND BEVERLY JOHNSON),
Vogue

"While the next generation of girls including Christy Turlington and Naomi Campbell were definitely a group, I pretty much kept to myself. But Lisa Taylor, Beverly Johnson, and I were a trio when we got together, and we would have a great time. When we finished this shoot in San Francisco, we were like, 'Let's get on the first plane out of here.' So we flew down to L.A. to see Bob Marley at the Roxy."



2

Photographed by
BEN
HASSETT

A LIFE IN PICTURES

Styled by
MEL
OTTENBERG



F-Shirt by
GILMAN
Jewelry
PATTI'S OWN

Hair
JOEY GEORGE
using ORIBE
HAIR CARE at
MANAGEMENT
ARTISTS

Makeup
CHIRO OMAE
using MAC
COSMETICS at
FRANK REPS

Digital
Technician:
CARLO
BARRETO

Photography
Assistants:
ROEG COHEN
and
ALYEA-JEAN
CONDOL

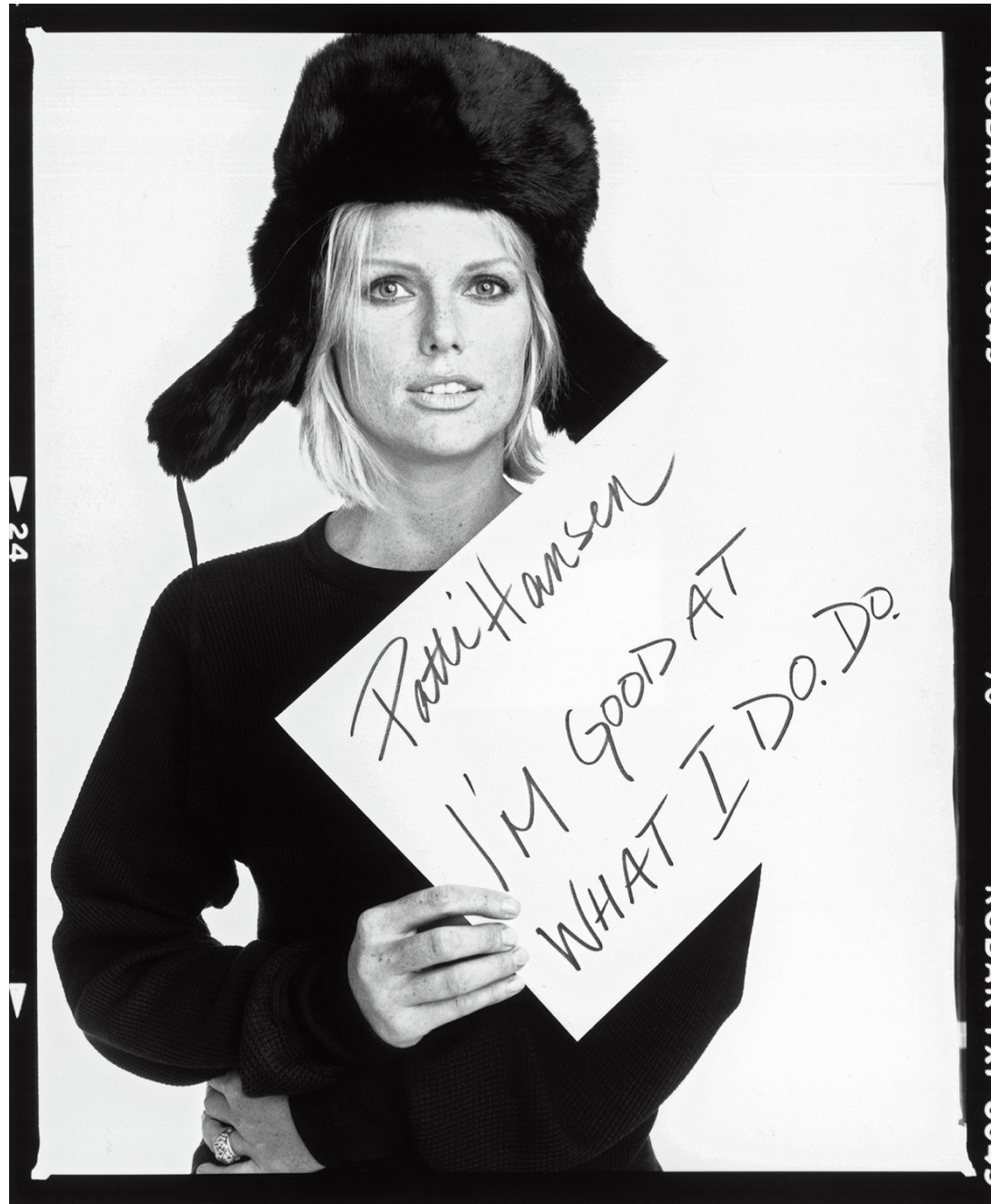
Fashion
Assistant:
DOMINIC
DOPICO
Manicure:
MAR Y SOL
INERILLO

A decade before supermodels were even a thing, PATTI HANSEN fit the bill. Discovered while selling hot dogs at her father's concession stand at the age of 16, the Staten Island native appeared on her first *Vogue* cover in 1975. "I pretty much became known as the all-American girl," says Hansen, now with more than 40 years of perspective. Timed to the release of her debut monograph, *Patti Hansen: a Portrait*, the fashion legend called from the Connecticut estate where she resides with her husband, Keith Richards, to reflect on four of her favorite photos from her enduring career.

1

PATTI HANSEN

HEIGHT 5'10 HAIR BLONDE EYES BLUE BUST 37 WAIST 27 HIPS 37 SHOE 11



PATTI HANSEN

HEIGHT 5'10 HAIR *BLONDE* EYES *BLUE* BUST 37 WAIST 27 HIPS 37 SHOE 11