

HEIGHT *5'10 1/2*

HAIR *RED*

EYES *BLUE*

BUST *32*

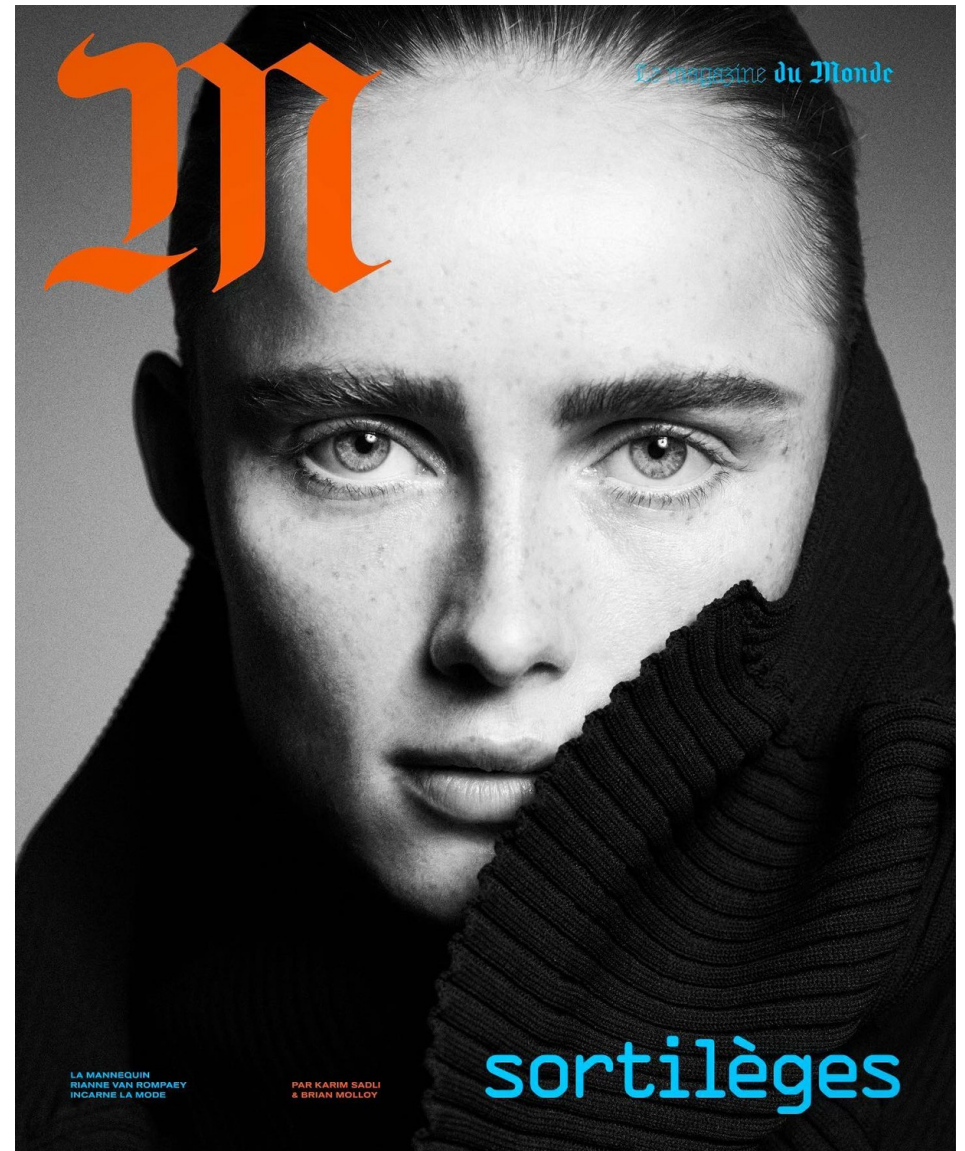
WAIST *24*

HIPS *34*

SHOE *9*

dna
MODEL MANAGEMENT LLC

555 WEST 25TH ST, 6TH FL NEW YORK, NY 10001 TEL. 212.226.0080 FAX 212.226.7711 dnamodels.com



RIANNE VAN ROMPAEY



Veste et jupe
déconstruites,
en laine,
BALENCIAGA.
Bottes en cuir,
LOEWE.



Page de gauche,
manteau en laine,
LOEWE.
Chaussures Kay
Oxford, en cuir,
THE ROW.

Ci-contre, robe
en polyester,
RICK OWENS.
Bottes en cuir,
LOEWE.

RIANNE VAN ROMPAEY

HEIGHT 5'10 1/2 HAIR RED EYES BLUE BUST 32 WAIST 24 HIPS 34 SHOE 9



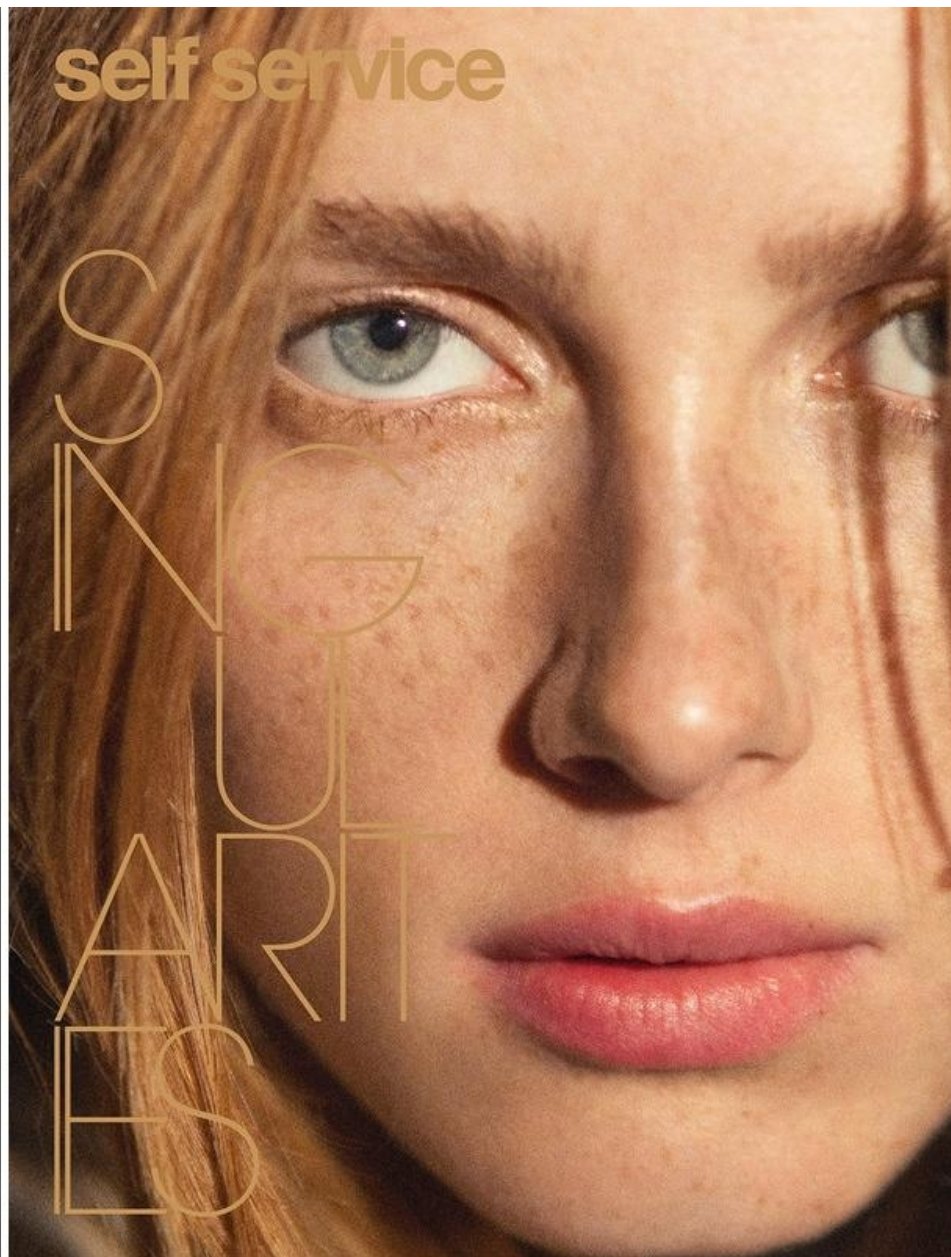
RIANNE VAN ROMPAEY

Camicia di cotone, Celine by Hedi Slimane. Occhiali, model's own. Pagina accanto: Giacca di seta e body stretch, Ralph Lauren Collection.



RIANNE VAN ROMPAEY

HEIGHT 5'10 1/2 HAIR RED EYES BLUE BUST 32 WAIST 24 HIPS 34 SHOE 9



RIANNE VAN ROMPAEY

HEIGHT 5'10 1/2 HAIR RED EYES BLUE BUST 32 WAIST 24 HIPS 34 SHOE 9



RIANNE VAN ROMPAEY

HEIGHT 5'10 1/2 HAIR RED EYES BLUE BUST 32 WAIST 24 HIPS 34 SHOE 9



RIANNE VAN ROMPAEY

HEIGHT 5'10 1/2 HAIR RED EYES BLUE BUST 32 WAIST 24 HIPS 34 SHOE 9



*Pants - JW ANDERSON // Shoes - BALENCIAGA
Necklaces & Bracelet - VICKI TURBEVILLE // All Else - STYLIST'S KIT*



RIANNE VAN ROMPAEY

HEIGHT 5'10 1/2 HAIR RED EYES BLUE BUST 32 WAIST 24 HIPS 34 SHOE 9



Van Rompaey wears a **Maison Margiela** jacket and culottes; vintage hat from National Theatre Costume Hire, London; vintage brooch from Angels Costumes, London; **Dolce & Gabbana** boots.



Van Rompaey wears a **Celine by Hedi Slimane** jacket; **Quira** skirt; vintage hat from National Theatre Costume Hire, London; stylist's own sock.

RIANNE VAN ROMPAEY

HEIGHT 5'10 1/2 HAIR RED EYES BLUE BUST 32 WAIST 24 HIPS 34 SHOE 9



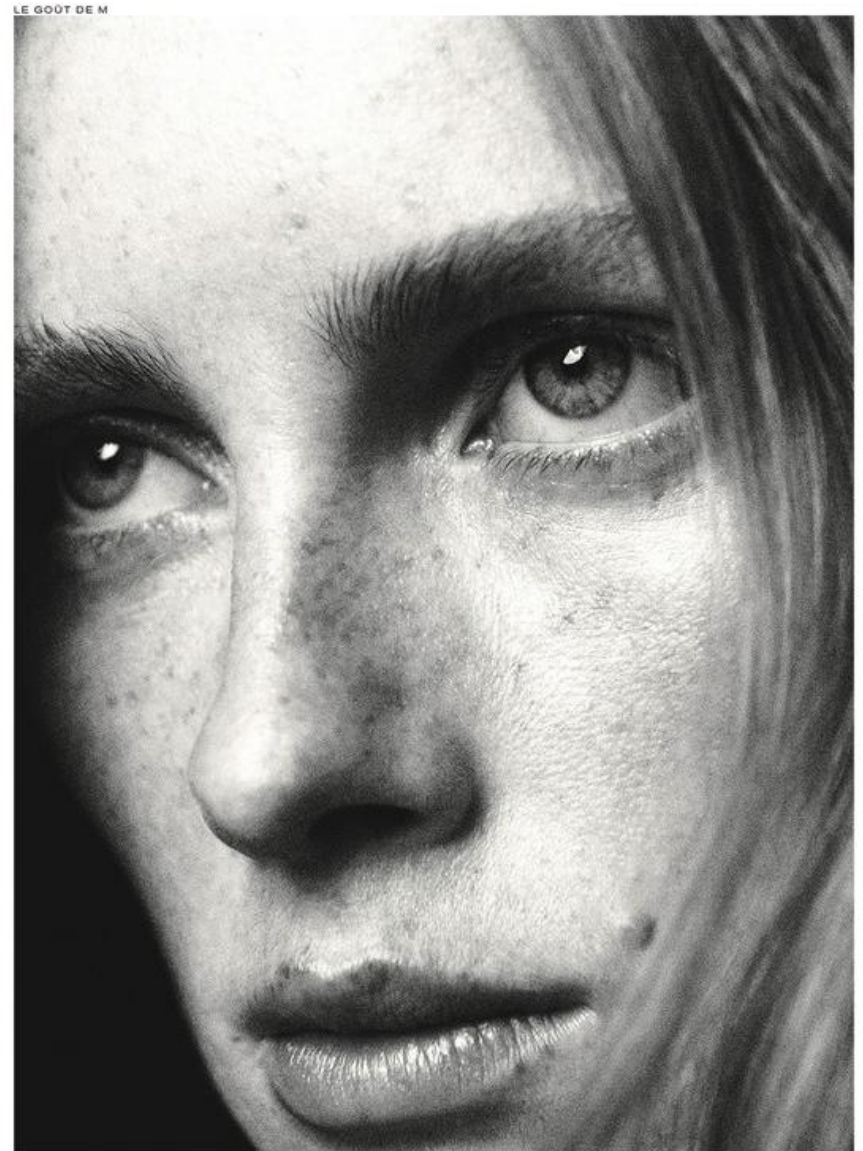
RIANNE VAN ROMPAEY

HEIGHT 5'10 1/2 HAIR RED EYES BLUE BUST 32 WAIST 24 HIPS 34 SHOE 9



RIANNE VAN ROMPAEY

HEIGHT 5'10 1/2 HAIR RED EYES BLUE BUST 32 WAIST 24 HIPS 34 SHOE 9



RIANNE VAN ROMPAEY

HEIGHT 5'10 1/2 HAIR RED EYES BLUE BUST 32 WAIST 24 HIPS 34 SHOE 9



THIS PAGE COAT LOUIS
 VUITTON, SWIMWEAR FERRE
 JEANS CALVIN KLEIN
 JEANS ESTABLISHED
 BOY, NECKLACES GORGIC
 PHOTO AND RETROGRAPHY,
 BRACELETS SCOSHA AND
 THE SHINY SQUIRREL,
 RINGS KATHIE'S JEWELRY
 AND THE SHINY SQUIRREL,
 BELT (STYFAGE), EARLY
 HALLOWEEN, OPPOSITE BELA
 (VINTAGE), COURTESY OF NEW
 YORK VINTAGE, FRESH SWEET
 FRAME, NECKLACES IN REZ
 A VISNODI AND KATHIE'S
 JEWELRY, BRACELETS
 SCOSHA, JULIE VOS, NEW
 YORK VINTAGE, AND IREN,
 ALL RINGS DROH AND KATHIE'S
 JEWELRY, BRACELETS PRADA.

RIANNE VAN ROMPAEY

HEIGHT 5'10 1/2 HAIR RED EYES BLUE BUST 32 WAIST 24 HIPS 34 SHOE 9



RIANNE VAN ROMPAEY

HEIGHT 5'10 1/2 HAIR RED EYES BLUE BUST 32 WAIST 24 HIPS 34 SHOE 9



RIANNE WEARS DRESS
BY COURREGES.

OPPOSITE PAGE: RIANNE
WEARS ROBE SHIRT
BY LORO PIANA, HEADSCARF
BY SCHIAPARELLI.

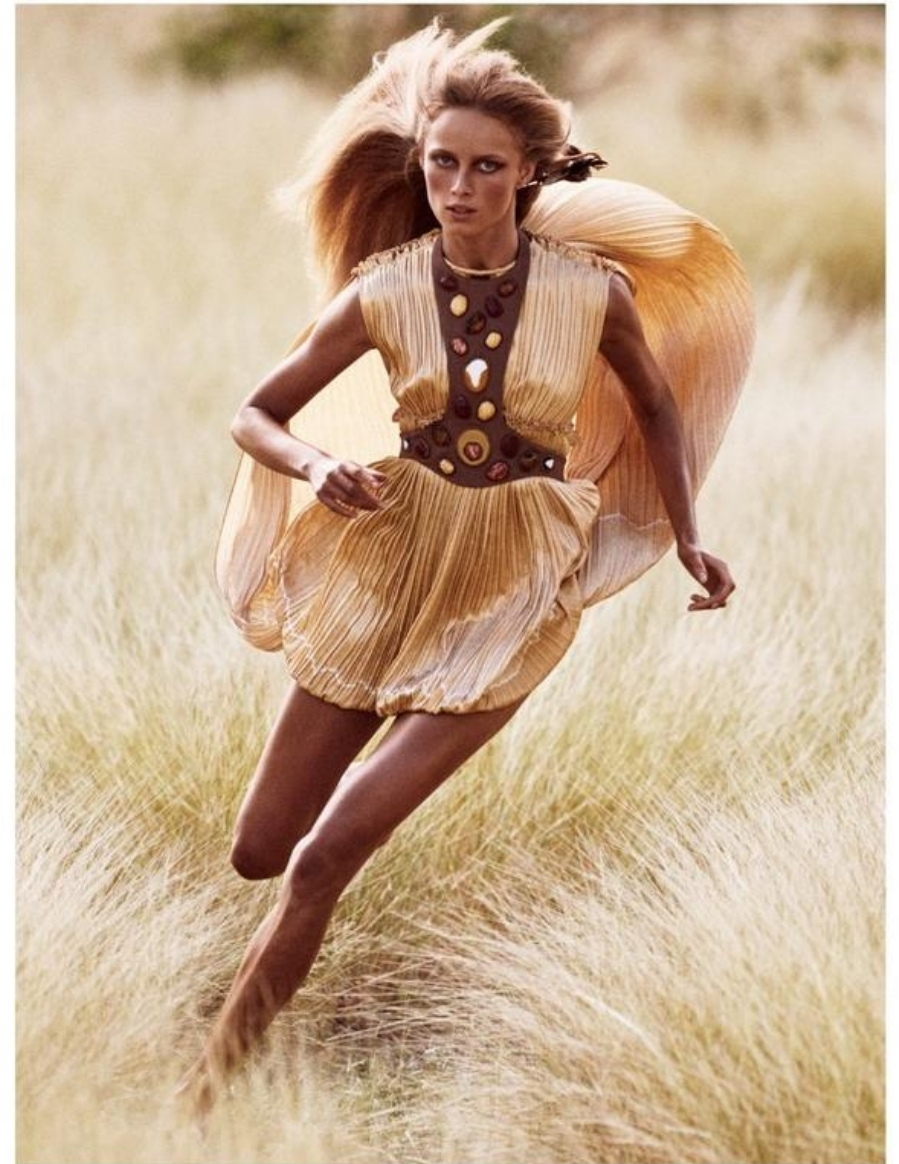
NEXT PAGE: RIANNE WEARS
TURTLENECK BY THE ROW,
PONCHO, PANTS AND SHOES
BY KOLOR, SOCKS BY THE
ELDER STATESMAN.



112

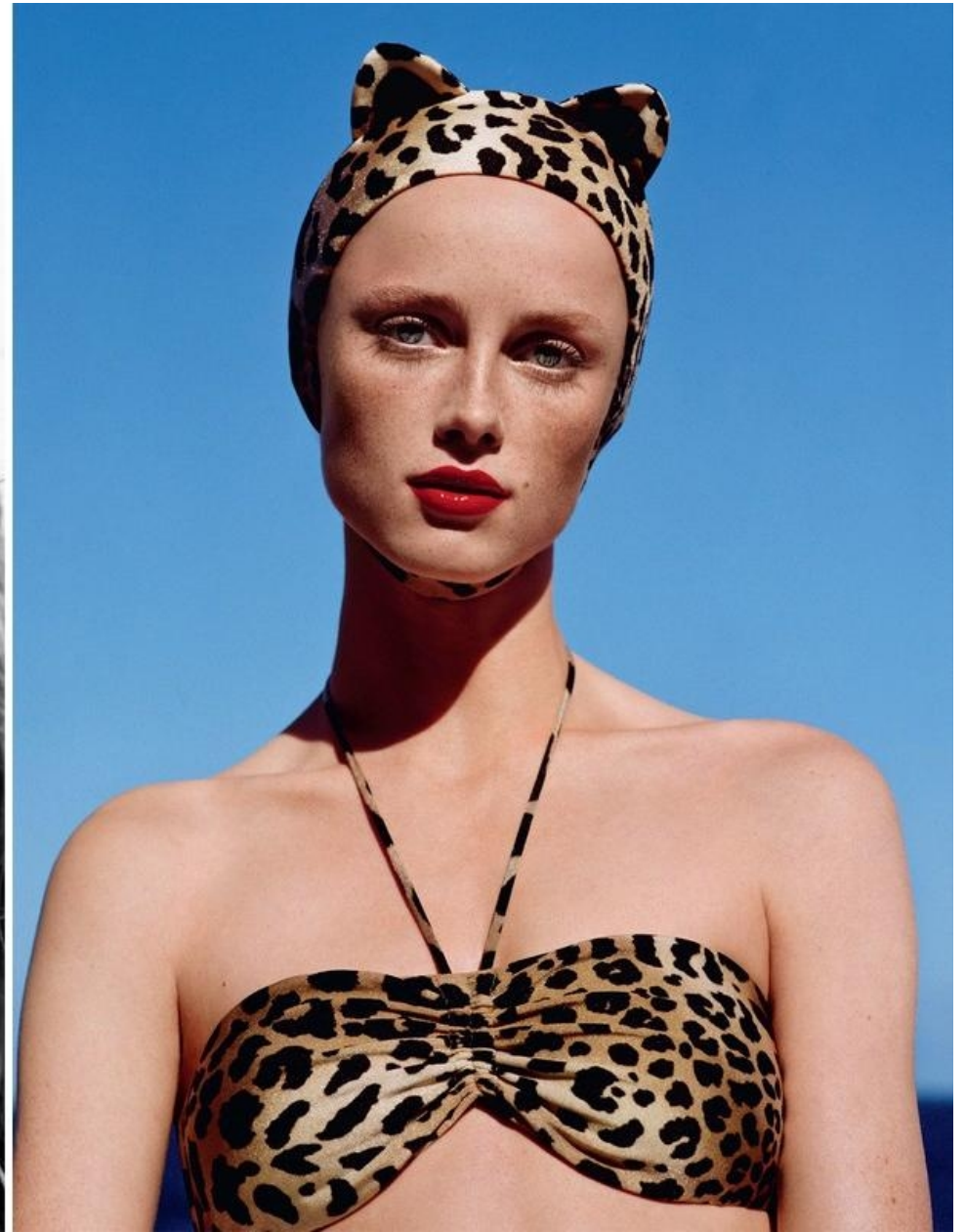
RIANNE VAN ROMPAEY

HEIGHT 5'10 1/2 HAIR *RED* EYES *BLUE* BUST 32 WAIST 24 HIPS 34 SHOE 9



RIANNE VAN ROMPAEY

HEIGHT 5'10 1/2 HAIR RED EYES BLUE BUST 32 WAIST 24 HIPS 34 SHOE 9



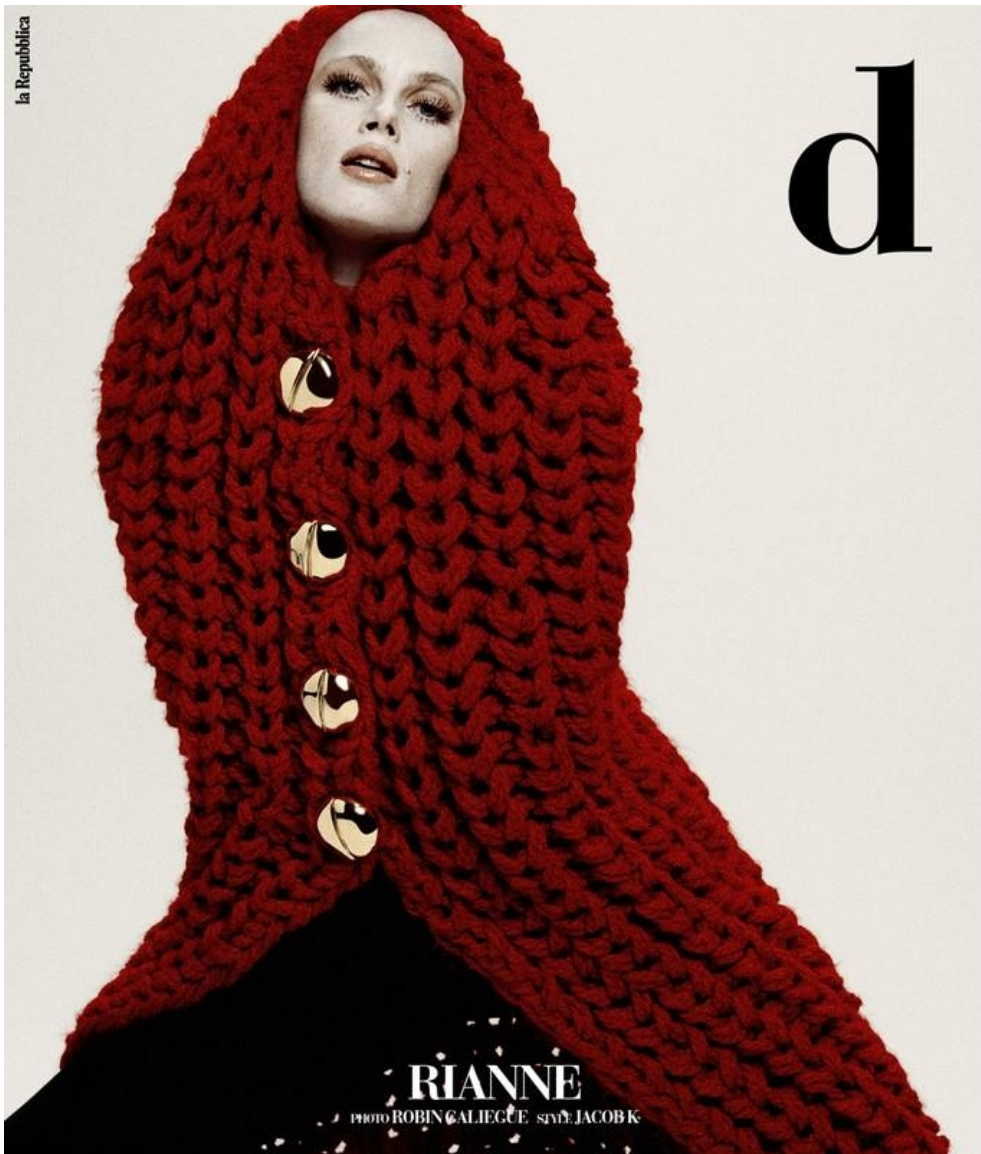
RIANNE VAN ROMPAEY

HEIGHT 5'10 1/2 HAIR RED EYES BLUE BUST 32 WAIST 24 HIPS 34 SHOE 9



RIANNE VAN ROMPAEY

HEIGHT 5'10 1/2 HAIR RED EYES BLUE BUST 32 WAIST 24 HIPS 34 SHOE 9



RIANNE VAN ROMPAEY

HEIGHT 5'10 1/2 HAIR RED EYES BLUE BUST 32 WAIST 24 HIPS 34 SHOE 9



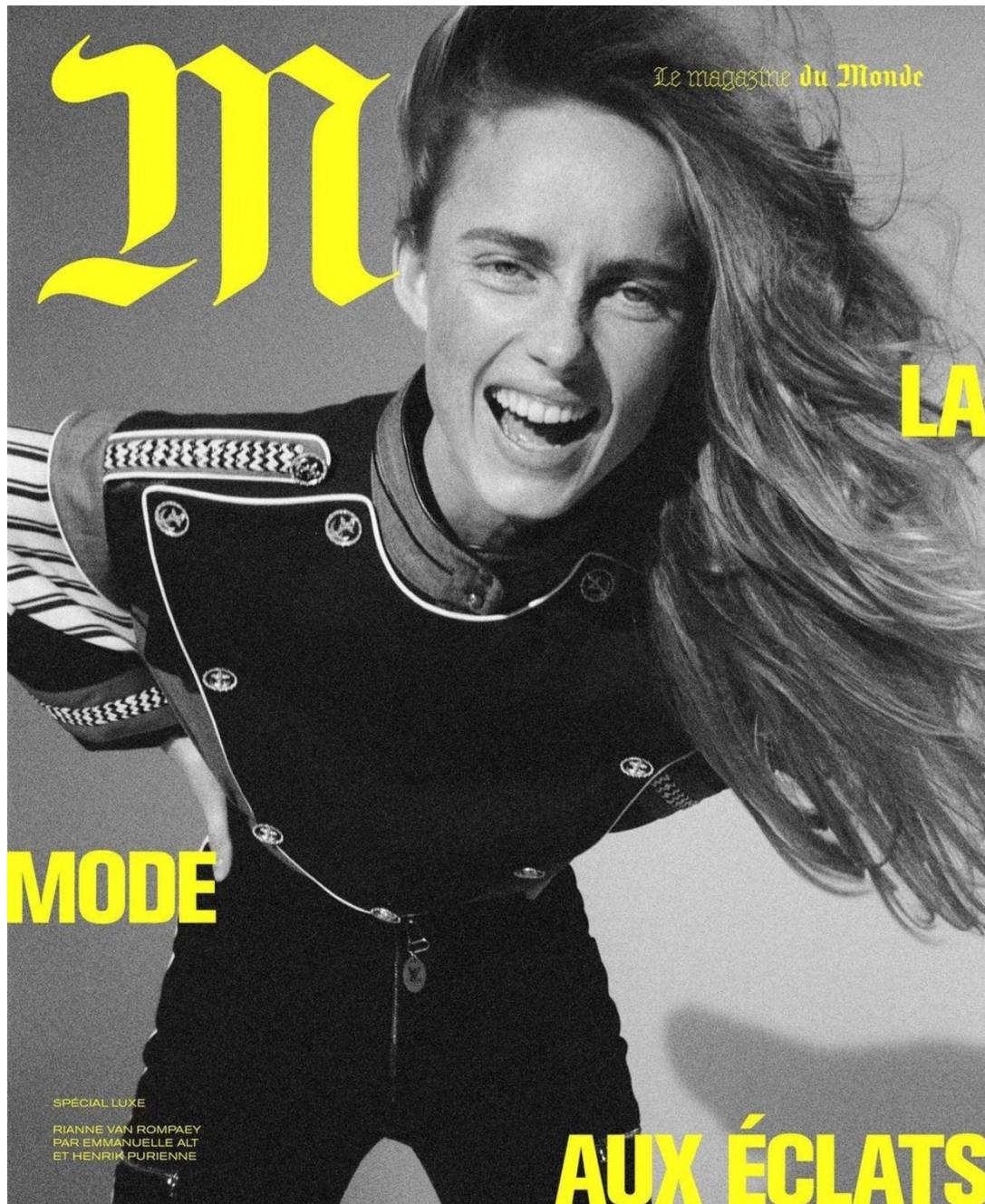
RIANNE VAN ROMPAEY

HEIGHT 5'10 1/2 HAIR RED EYES BLUE BUST 32 WAIST 24 HIPS 34 SHOE 9



RIANNE VAN ROMPAEY

HEIGHT 5'10 1/2 HAIR RED EYES BLUE BUST 32 WAIST 24 HIPS 34 SHOE 9



RIANNE VAN ROMPAEY

HEIGHT 5'10 1/2 HAIR RED EYES BLUE BUST 32 WAIST 24 HIPS 34 SHOE 9