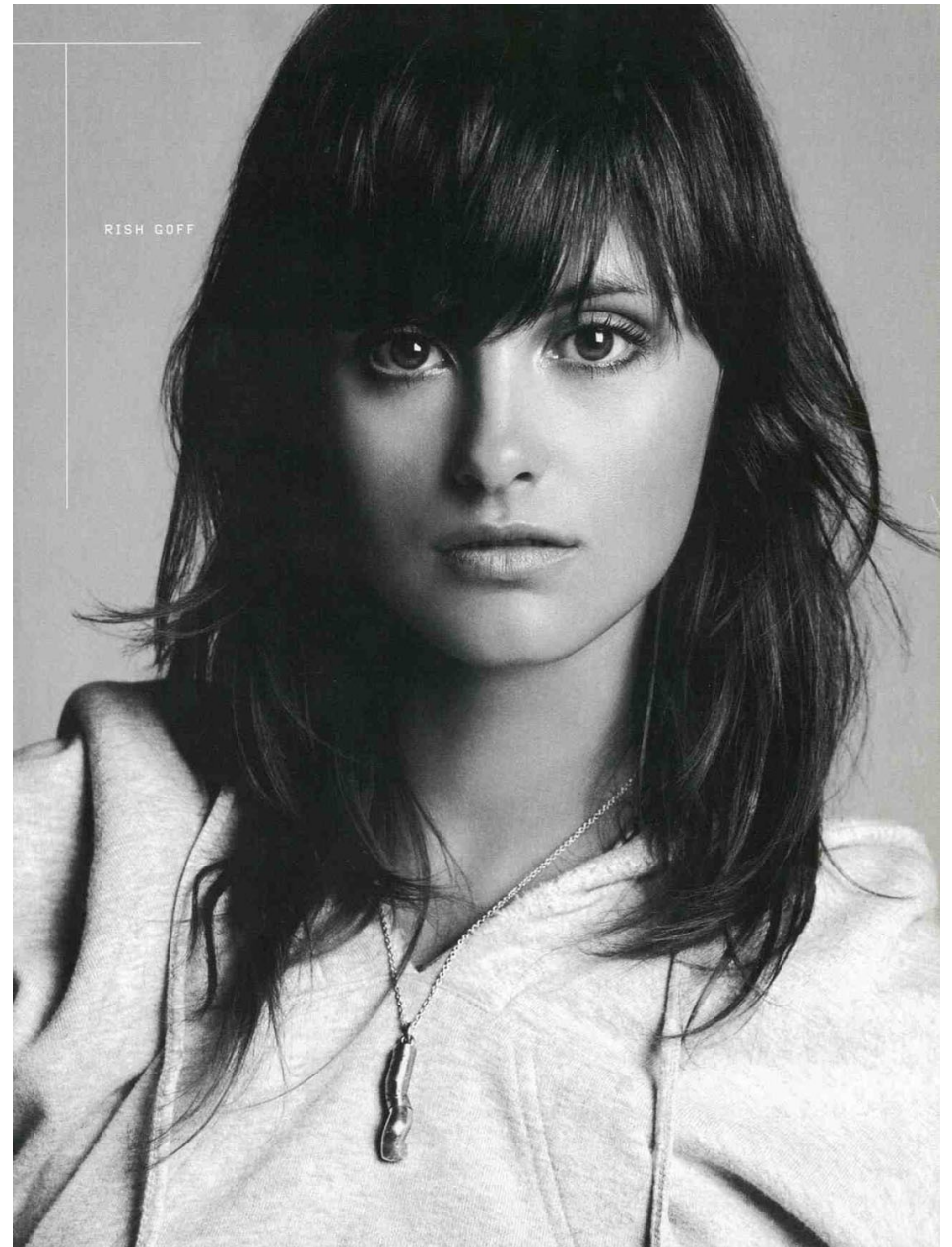


HEIGHT 5'9  
HAIR *BROWN*  
EYES *BROWN*  
BUST 34  
WAIST 24 1/2  
HIPS 35  
SHOE 9

**dna**  
MODEL MANAGEMENT LLC

555 WEST 25TH ST, 6TH FL NEW YORK, NY 10001 TEL. 212.226.0080 FAX 212.226.7711 [dnamodels.com](http://dnamodels.com)



TRISH GOFF



Preppy staples—  
a turtleneck sweater and  
a peacoat—will carry a  
wardrobe forever. **THIS**  
**PAGE:** Sweater, \$470,  
**Calvin Klein**. Men's  
alligator watch, \$2050,  
**David Yurman**. For  
pampered hands, try  
La Prairie Cellular Hand  
Cream, \$85. **OPPOSITE**  
**PAGE:** Double-breasted  
wool peacoat, \$488,  
**Marc by Marc Jacobs**.  
Wool pants, \$550, **Jill**  
**Sander**. Leather ankle boots,  
\$480, **Helmut Lang**. See  
Where to Buy for details.  
Fashion editor:  
**Biana Wolf**



Calvin Klein  
silk crepe-georgette  
dress. Calvin Klein  
Store, NYC, Dallas;  
Nordstrom.

>> *drama*

"An ankle-grazing  
dress makes a  
powerful, dramatic  
statement. It's like  
those great tailored  
skirts that Diane  
Keaton wore in *Play  
It Again, Sam*"

—Madeline Meyerowitz,  
Internet entrepreneur,  
St. Louis

# TRISH GOFF

HEIGHT 5'9 HAIR BROWN EYES BROWN BUST 34 WAIST 24 1/2 HIPS 35 SHOE 9



look of the moment

GET A GRIP

A touchy-feely relationship, no straps attached. THIS PAGE: Prada black-white-and-yellow woven clutch (about \$780), striped turtleneck, snap skirt. Bag at Prada boutiques. OPPOSITE PAGE: Tom Ford for Yves Saint Laurent Rive Gauche giant white patent envelope (about \$695), black cocktail dress with corset wrap, satin sandals (about \$495). Bag and shoes at Neiman Marcus. Details, more stores, see In This Issue. Fashion Editor: Elissa Santisi



Donna Karan New York bias fringe jacket (about \$1,400) and collage bias skirt with jersey slip (about \$995). Bergdorf Goodman. Donna Karan New York stores.

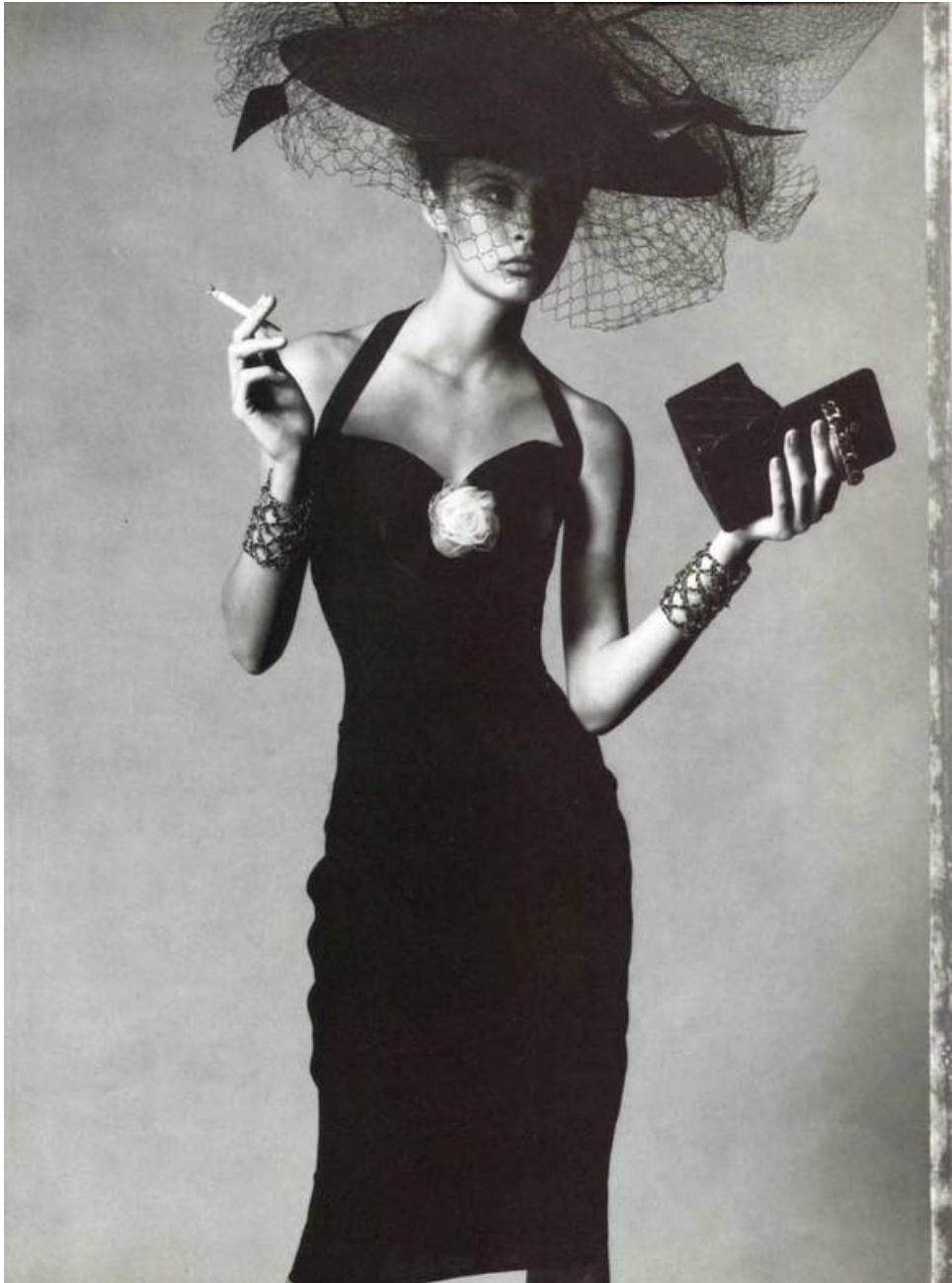
>> *new york*

"Ten years ago, the suit was a regular item. Now it's a special one, an expression of respect. It says, 'I really thought about this meeting'."

—Marianne Diorio, beauty executive

TRISH GOFF

HEIGHT 5'9 HAIR BROWN EYES BROWN BUST 34 WAIST 24 1/2 HIPS 35 SHOE 9



# TRISH GOFF

HEIGHT 5'9 HAIR *BROWN* EYES *BROWN* BUST 34 WAIST 24 1/2 HIPS 35 SHOE 9



Tailleur di crepe di lana, tessuto Gandini, e borsa di cristalli. Nella pagina accanto. Tubino di crepe, tessuto Burg, e microborsetta trapuntata. Tutto Chanel Haute Couture. Cappelli Studio Chanel realizzati dalla Maison Michel e Philip Treacy. Pettinature Ward. Maquillage Denise Markey for The Stephen Knoll Salon NY.

# TRISH GOFF

HEIGHT 5'9 HAIR *BROWN* EYES *BROWN* BUST 34 WAIST 24 1/2 HIPS 35 SHOE 9



Capelli impeccabili e morbidi con Hair Sensation Laque Protection Ultra-Douce di Lancôme, ad alta tenuta. Mini abito con piume, Roberto Cavalli. A SINISTRA. Make-up Caramel di Sisley. Per gli occhi, Ombres Botaniques Vaniglia e Phyto Mascara Double Action Deep Brown. Sulle labbra Glossy Gloss Passiflora. Top con volant in chiffon, Christian Dior. Trucco Denise Markey/Art&Commerce.



Per illuminare il viso, ma anche il décolleté, Lights of Glamour Allover di Versace. È una crema ricca di oli, perle e vitamina E, nella tonalità oro. Top in chiffon, Blumarine; stola con chiusura in cristalli, Cassin. A SINISTRA. Effetto shine su tutta la pelle con Luminous Body Lotion della linea corpo Carolina, l'ultimo sensuale profumo di Carolina Herrera. Lungo abito in chiffon con bustier, Versace.

# TRISH GOFF

HEIGHT 5'9 HAIR BROWN EYES BROWN BUST 34 WAIST 24 1/2 HIPS 35 SHOE 9



Spring's hip lease encourages a new sensuality around the waist with low-slung skirts and cropped shells in an easy cut. Top (about \$495) and skirt (about \$395) by Donna Karan, New York; Saks Fifth Avenue, NYC. In this story: hair, Goran of Goran, New York; at Henri Bendel; makeup, Francois Nars for Nars, Barneys New York. Details, more stores, see in This Issue.

117



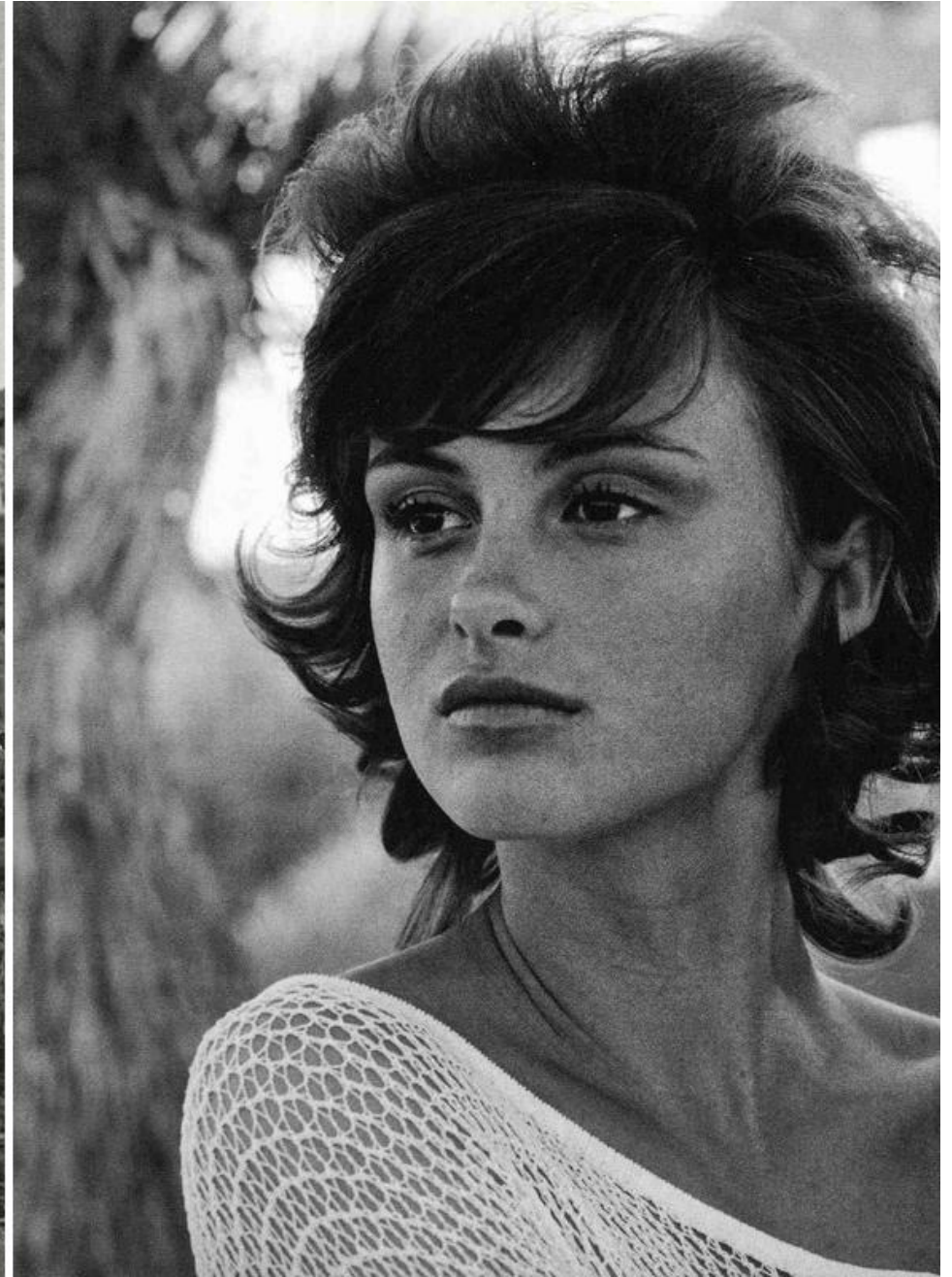
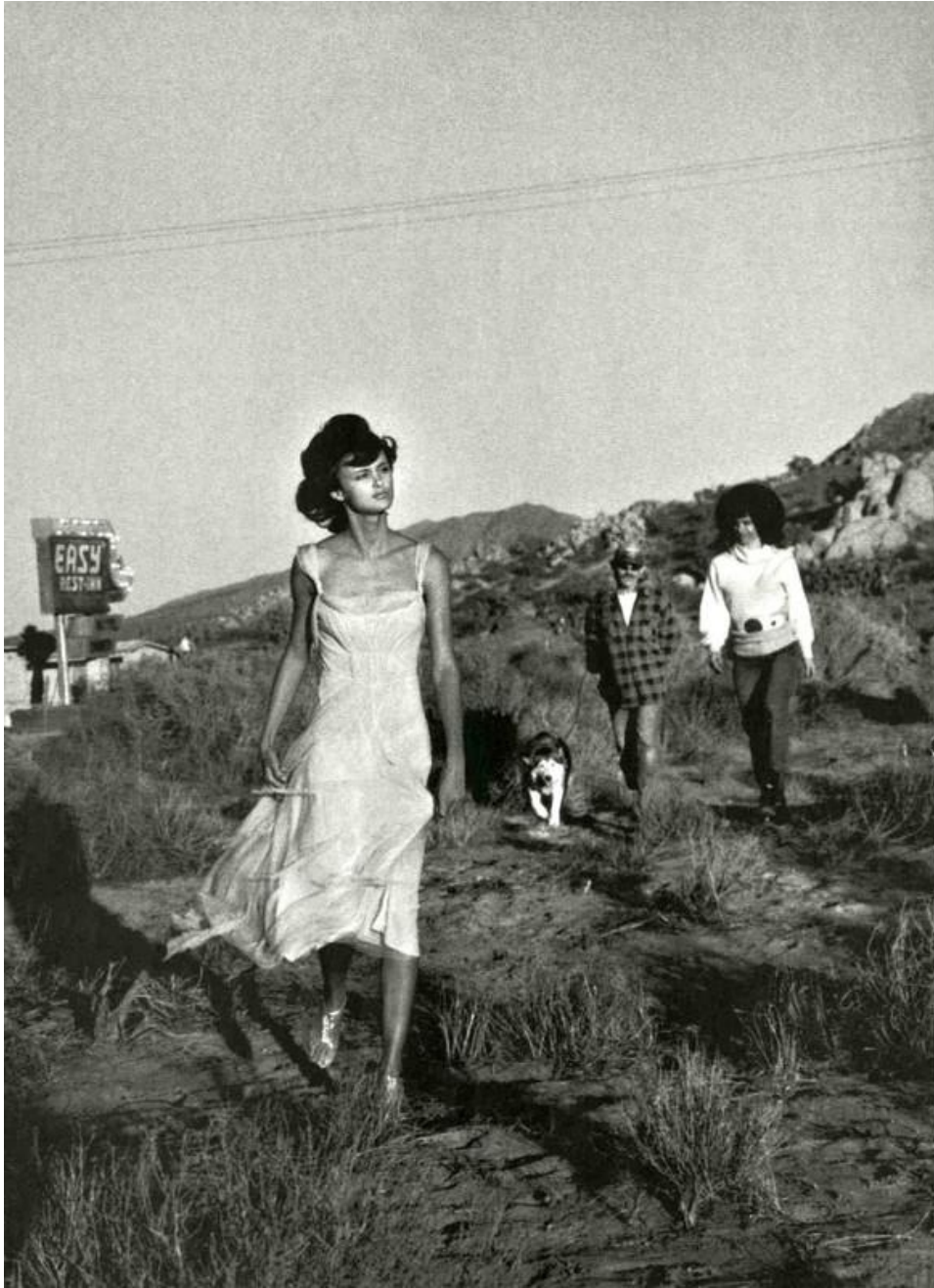
“Today’s women want clothing that is beautiful and modern and doesn’t take a lot of time to put together.”  
CALVIN KLEIN

Comelet, THIS PAGE: Calvin Klein plumbs “the timeless appeal of classic fashion idioms” to strip them down to the essence of minimal design. Wool coat, about \$1,180. Boot-cut pants, about \$630. Black shirt, about \$400. The Calvin Klein Store, NYC; Nordstrom, Sacramento. Coat and pants also at Saks Fifth Avenue, NYC. OPPOSITE PAGE: Variations on a theme: Chanel’s wool shirt—in acid-bright lemon and grape—capitalizes on the strong comeback of the dress. Dress right, about \$1,545. Bergdorf Goodman; Neiman Marcus; Chanel boutiques. Dress left at Bloomingdale’s. Details, more stores, see in This Issue.

112

# TRISH GOFF

HEIGHT 5'9 HAIR BROWN EYES BROWN BUST 34 WAIST 24 1/2 HIPS 35 SHOE 9



# TRISH GOFF

HEIGHT 5'9 HAIR *BROWN* EYES *BROWN* BUST 34 WAIST 24 1/2 HIPS 35 SHOE 9





# TRISH GOFF

HEIGHT 5'9 HAIR BROWN EYES BROWN BUST 34 WAIST 24 1/2 HIPS 35 SHOE 9



Fashioning new drapes, this PAGE: In a collection that mixes disco mesh with Byzantine chic, Versace created a dream in white jersey. Dress by Atelier Versace. OPPOSITE PAGE: Playing with texture and design, Christian Lacroix combines smooth silk satin with intricate embroidery and beading. Dress by Christian Lacroix Haute Couture. Details, see in This Issue.

BEAUTY NOTE Goddess worship. Porcelain skin, black winged eyes, and brown shimmer on lips create an ethereal look. Custom Eyes Shadow in Very Black. Super Lustrous Lipstick in Lead Macho and Tinted Lip Liner for Lips in Spice. All by Revlon.



Romance lives, this PAGE: This is what couture is all about—a celebration in tulle, lace, beading, and wrapping. Dress by Chanel Haute Couture. OPPOSITE PAGE: If John Galiano created a superhero, these would be her dresses—The Age of Innocence meets Metallica. Dresses by Christian Dior Haute Couture. Details, see in This Issue.

# TRISH GOFF

HEIGHT 5'9 HAIR BROWN EYES BROWN BUST 34 WAIST 24 1/2 HIPS 35 SHOE 9



Trish Goff. Abito lungo di chiffon con fiocco di satin, Tom Ford per Gucci. Cappello James Caviezel. Nella pagina accanto, Shalom Harlow. Abito di seta con bordi a elastico, Costume National. Scialle Alabama; anello David Yurman.



O rli al vivo e spesso a strappo. Stringhe penzolanti e ruvidezze da cowboy. Ma anche charme da fanciulla delle praterie

## TRISH GOFF

HEIGHT 5'9 HAIR BROWN EYES BROWN BUST 34 WAIST 24 1/2 HIPS 35 SHOE 9

off the grid



ARMED IN BLACK, THIS PAGE, MODEL-OF-THE-MOMENT TRISH GOFF REDEFINES FORMFITTING DRESSING IN A SILK CROPPED TOP AND MINI. JE SANDER TOP (ABOUT \$445) AND SKIRT (ABOUT \$505). JANET BROWN, PORT WASHINGTON NY; ROMANOFF, BAL HARBOUR FL; JE SANDER, CHICAGO. OPPOSITE PAGE: BACK IN BLACK—A MULTISTRAPPED DRESS BY KRIZIA MOLDS TO THE BODY LIKE A SEXY SCUBA SUIT. DRESS, ABOUT \$531. KRIZIA BOUTIQUE, NYC, SAN FRANCISCO, ONTARIO CANADA. DETAILS, SEE IN THIS ISSUE. FASHION EDITOR: CAMILLA NICKERSON. PHOTOGRAPHER: NICK KNIGHT

326



INTENDED TO EVOKE A DETECTIVE'S SHOULDER HOOKER, THIS PAGE, THIS BLACK SATIN SINGLE-STRAPPED TOP EXPOSES MORE THAN IT CONCEALS. TOP BY MARTINE SITCH, ABOUT \$150. BARNAYS NEW YORK; NEWMAN MARCUS, LOS ANGELES. PANTS BY LISA BRUCE, ABOUT \$185. CHARMAN, NYC; ROY HERMAN/FRED SEGAL MEUCOSI, LOS ANGELES. OPPOSITE PAGE: A ZIP-BACK TOP—DESIGNED TO SUGGEST THE LINES OF THE RIBS—COPS BY MARTINE SITCH, ABOUT \$330. BARNAYS NEW YORK; NEWMAN MARCUS, LOS ANGELES. SHORTS BY ANNA MOVINARI BLUMARINE, ABOUT \$255. OXYGÈNE, BAL HARBOUR FL; THEODORE, BEVERLY HILLS. DETAILS, SEE IN THIS ISSUE.

# TRISH GOFF

HEIGHT 5'9 HAIR BROWN EYES BROWN BUST 34 WAIST 24 1/2 HIPS 35 SHOE 9



Trish Goff

Model / Actress  
 このストーリーを撮影したフォト  
 グラファー、ナサニエル・バート  
 ナーでもあるトリッシュは2度の婚  
 びを経験しているが、この写真  
 撮影時に、スウェーデンに居  
 るコロンビア・カウチのグ  
 ャット・レスをまとって、ツイ  
 ドのワンピース ¥904,500 /  
 BALENCIAGA BY NICOLAS  
 GHESSQUIERE (フーロート)



STOLA IN LANA  
 RIVESTITA DI PUME  
 PAULE KA. PANTALONI  
 IN COTONE E TESSUTO  
 TECNICO CON  
 INSERTO DI PELLE  
 METAL. GUESS JEANS  
 DECOLLETTES IN SUEDE  
 CON DETTAGLI  
 DI METALLO.  
 DOLCE & GABBANA.

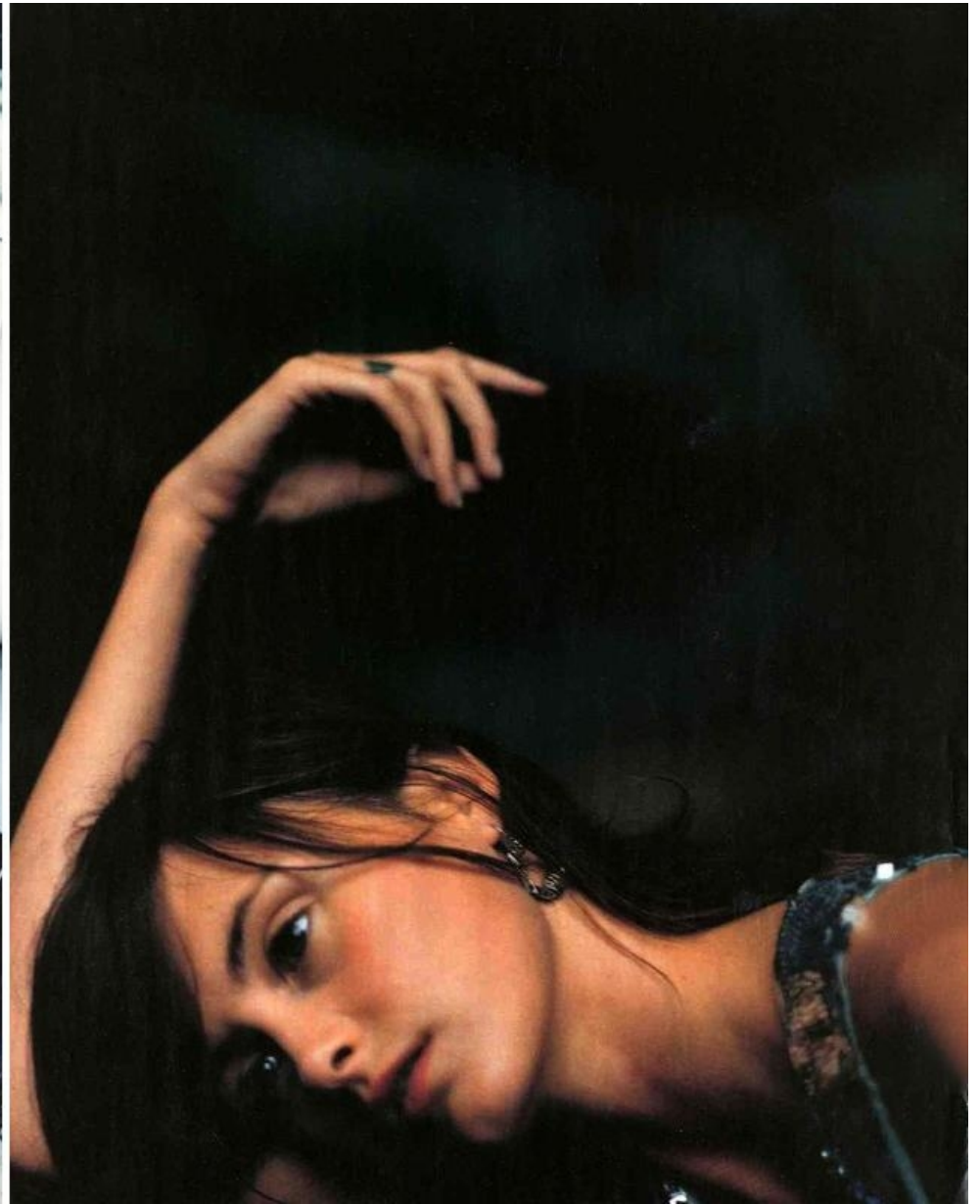
# TRISH GOFF

HEIGHT 5'9 HAIR BROWN EYES BROWN BUST 34 WAIST 24 1/2 HIPS 35 SHOE 9



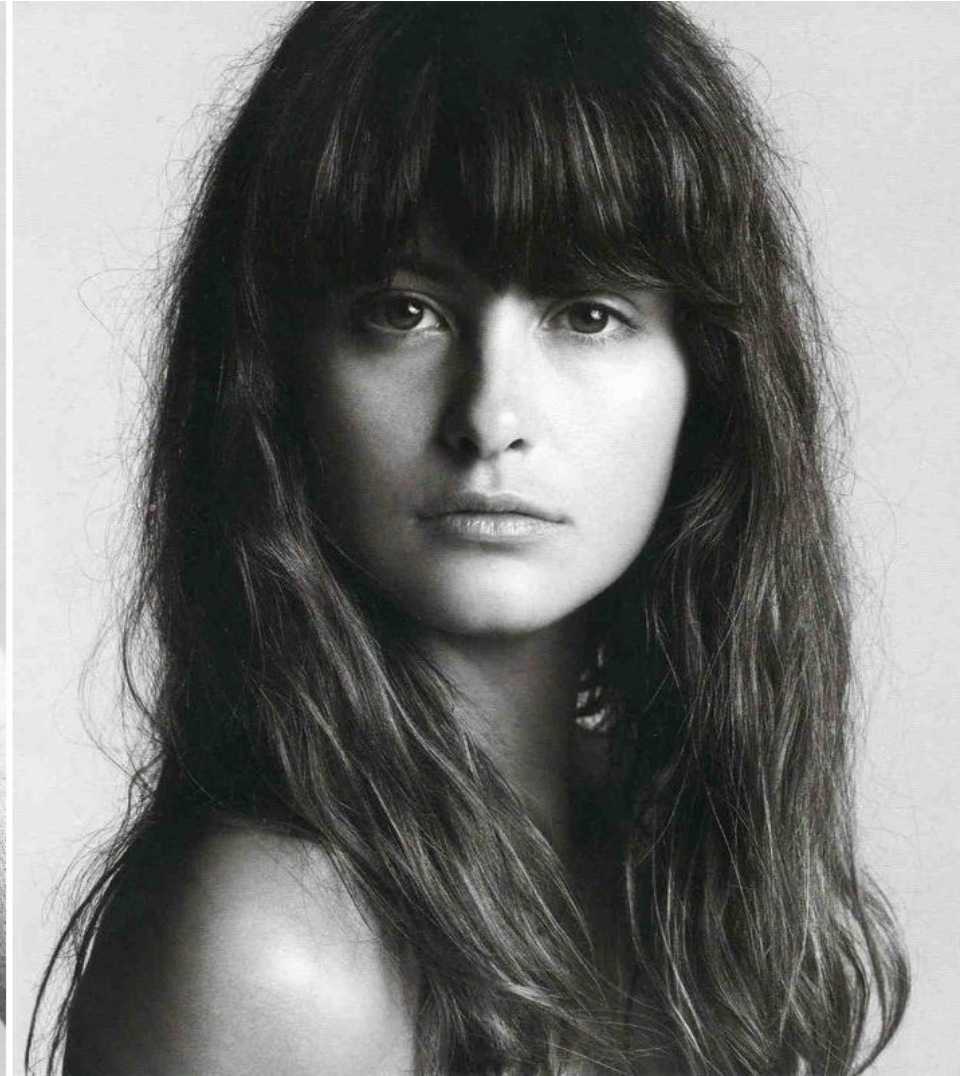
# TRISH GOFF

HEIGHT 5'9 HAIR *BROWN* EYES *BROWN* BUST 34 WAIST 24 1/2 HIPS 35 SHOE 9



# TRISH GOFF

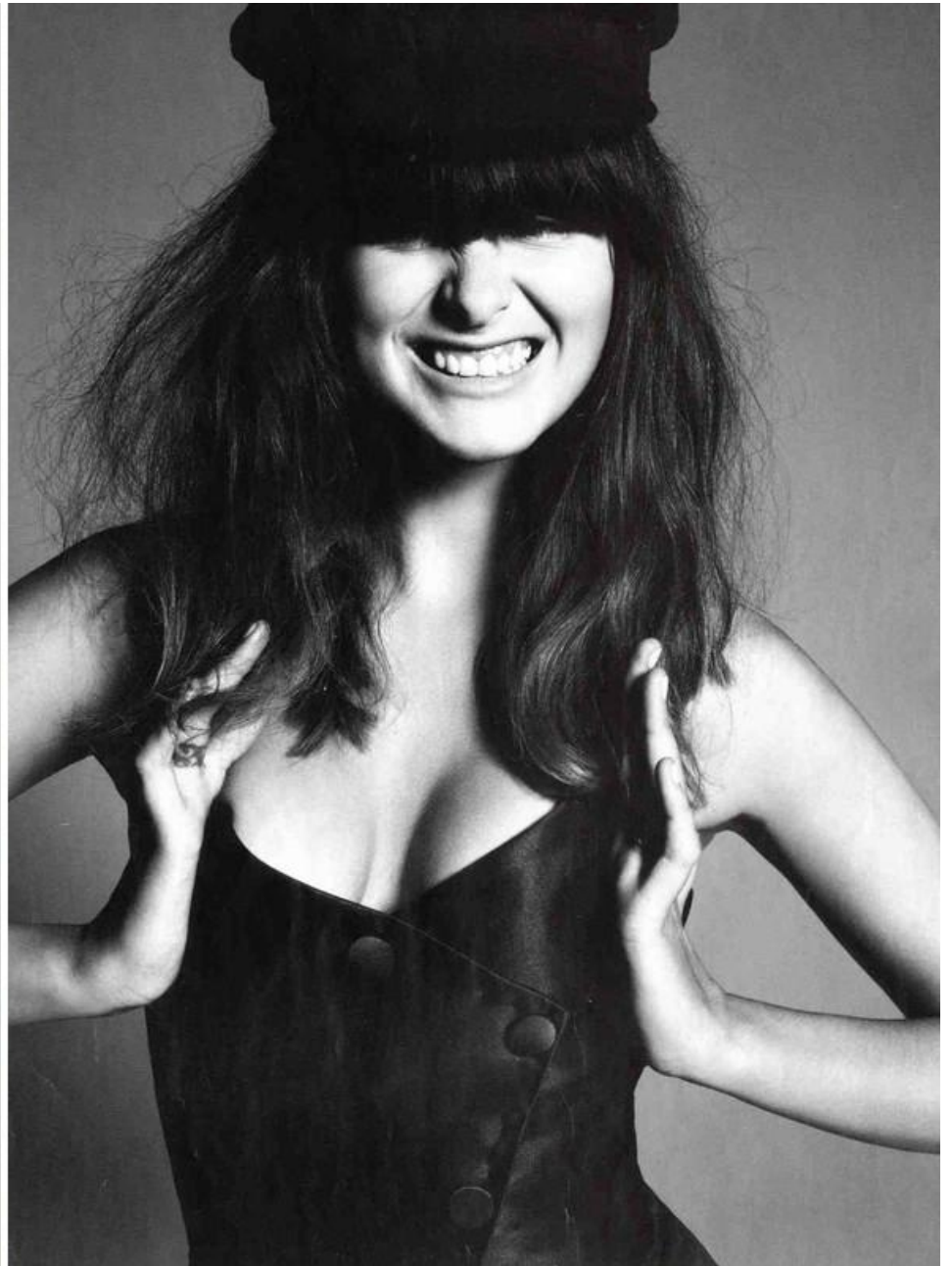
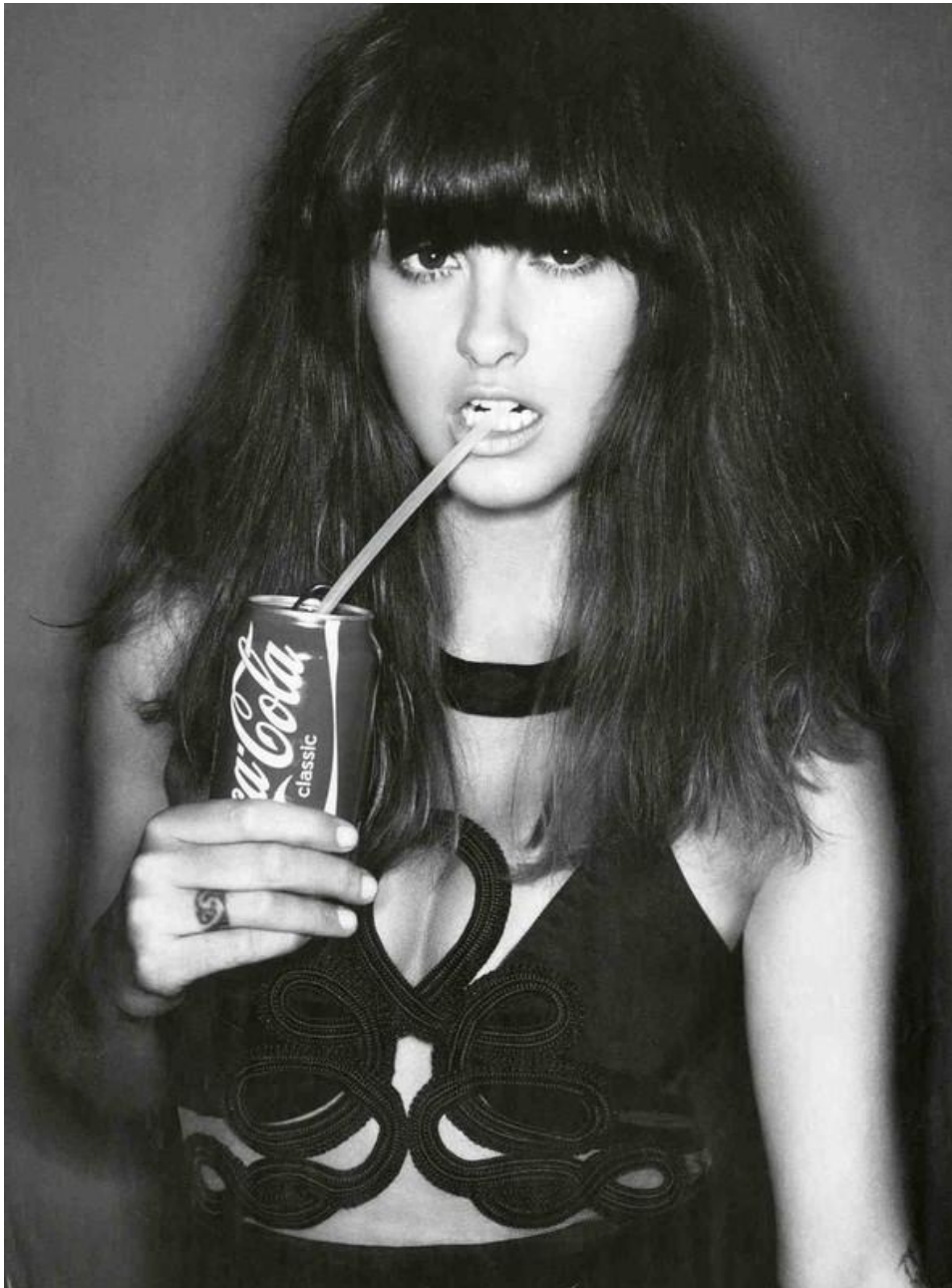
HEIGHT 5'9 HAIR *BROWN* EYES *BROWN* BUST 34 WAIST 24 1/2 HIPS 35 SHOE 9



# TRISH GOFF

HEIGHT 5'9 HAIR *BROWN* EYES *BROWN* BUST 34 WAIST 24 1/2 HIPS 35 SHOE 9





# TRISH GOFF

HEIGHT 5'9 HAIR *BROWN* EYES *BROWN* BUST 34 WAIST 24 1/2 HIPS 35 SHOE 9



TRISH GOFF

HEIGHT 5'9 HAIR BROWN EYES BROWN BUST 34 WAIST 24 1/2 HIPS 35 SHOE 9



## TRISH GOFF

HEIGHT 5'9 HAIR BROWN EYES BROWN BUST 34 WAIST 24 1/2 HIPS 35 SHOE 9



## TRISH GOFF

HEIGHT 5'9 HAIR BROWN EYES BROWN BUST 34 WAIST 24 1/2 HIPS 35 SHOE 9



## TRISH GOFF

HEIGHT 5'9 HAIR *BROWN* EYES *BROWN* BUST 34 WAIST 24 1/2 HIPS 35 SHOE 9